



Manufacturing excellence for over 30 years



Established 1982

Catalog No. 29

ABOUT US

White Water Marine Hardware has been in the business of innovative product design and manufacturing for over 30 years. We began as an OEM supplier for boat manufacturers and later saw the opportunity to provide manufacturing support to other OEMs and marine hardware distributors. We own and operate three factories which enables us to provide our customers with the most competitive pricing and quality.

Many companies are engaged in offshore manufacturing but often receive mixed results. We successfully navigate these challenges through our family company values. Based out of Shanghai, the founder Jimmy Ma, along with his team of engineers and factory foremen directly manage all overseas operations. This level of hands-on involvement displays our commitment to quality product and outstanding customer service.

White Water Marine Hardware has two distribution centers in the USA – strategically located on both the East and West Coast allowing us flexibility in responding to customer needs through:

- Minimized time differences (Pacific Standard Time vs. Eastern Standard Time)
- Shorter transit times and reduced freight costs
- Combined order fulfillment procedures aimed at better inventory flow

We take great pride in our ability to understand and respond to our customers' needs. We offer unfailing quality and timely delivery at truly competitive prices.

Thank you very much for considering White Water for your hardware needs.

Victoria Ma
US Operations

MANUFACTURING CAPABILITIES

White Water Marine Hardware owns and operates several manufacturing facilities overseas. Our manufacturing capabilities include:

- Precision Casting in SS, Aluminum, Brass, and Bronze
- Metal Fabrication
- CNC Machining
- Plastic Injection Molding
- Welding
- High Polish, Electropolish, Passivation, and other types of metal finishes

CONTACT INFORMATION

WEST COAST
14716 Central Avenue
Chino, CA 91710
Tel: (909) 393-6100

EAST COAST
13663 Automobile Boulevard
Clearwater, FL 33762
Tel: (727) 572-8871
Á
Á

RESEARCH AND DEVELOPMENT

White Water has assembled a very talented staff of experienced product designers to assist you in developing products exclusively for your needs. We encourage you to challenge us.

PRICING

Prices are effective through December 30th of the calendar year. New pricing will be available by October before the new year and will be effective January 1st.

CREDIT

Customers may apply for an open line of credit by filling out the necessary forms and pending approval. Alternatively, orders may be shipped COD to avoid delay.

White Water reserves the right to revoke change or revoke credit terms contingent upon the customer's payment history. Notice will be provided to the customer of any changes in credit terms.

INVENTORY / LEAD TIME

White Water Marine Hardware will maintain certain inventory levels for our standard product line and custom products requested by the customer on White Water Marine Hardware's Custom Stock Agreement form. These products will ship either from our California or Florida warehouse location with a 1 - 5 business day lead time.

All products excluded from our standard inventory and the Custom Stock Agreement form may require up to a 60 - 90 business day lead time depending on item availability.

3RD PARTY DROP SHIP POLICY

Our drop ship program is free of handling charges.

However, in order to increase efficiency in handling drop ship orders, avoid losses, delays, damages, and billing issues, we will only be offering pre-paid services and added onto the invoice. The freight services offered are UPS, USPS, and LTL carriers. This only affects customers who request third party billing, freight collect customers are not affected.

RETAIL PACKAGING

Retailers and Distributors may purchase items in retail display packaging. Retail display packaged items are identified with a "-1" after the part number on your purchase order.

For example, if a customer would like to purchase a cup holder (part # 56228S) with shell packaging, simply put "56228S-1" on the purchase order.

Standard display packaging may consist of injection molded shells with logo inserts, shells with logo cardboard backing, and poly bags with card headers.

WARRANTY AND RETURNS

WARRANTY:

White Water Marine Hardware warrants to the original purchaser that the hardware will be free from corrosion, under normal use and service, for (2) years after the purchase date.

This limited warranty is not applicable if the hardware is damaged by accident, improper installation, unreasonable use, lack of proper maintenance, unauthorized repair or modification, or any other causes not arising out of defects in material and/or workmanship.

Under this warranty, White Water Marine Hardware's obligations are limited to repair of the product at one of White Water Marine Hardware's plants, or replacement of the product at White Water Marine Hardware's discretion and at White Water Marine Hardware's expense. Any expenses involved in the removal, reinstallation, or transportation of the products are not covered by this warranty.

This document contains White Water Marine Hardware's only express warranty of the product. This warranty is expressly made in lieu of any other incidental or consequential costs, expenses or damages. This warranty gives the purchaser specific legal rights, and the purchaser may also have other rights which vary from state to state.

RETURNS and EXCHANGES:

The product in question has to be returned to White Water Marine Hardware via shipment options approved and agreed on by White Water Marine Hardware. Returns must also include a copy of the original invoice. The acceptance by White Water Marine Hardware of any product returned shall not be deemed an admission of the defect of product or violation of the warranty.

Returns must be accompanied by a Return Merchandise Authorization (RMA) number issued by White Water.

Returns of product must be in the original and unused condition. Include a copy of the packing slip or invoice with your return authorization number

Returns will be subject to a 15% handling and re-stocking fee.

Returns may be processed up to 1 year after the purchase date. Exceptions will be made on a case by case basis.

CLAIMS:

It is the responsibility of the carrier for damages or loss of products while in transit. In case of such shortage or damage, the carrier should be contacted and claims should be filed with the carrier immediately. Claim processes may vary from carrier to carrier.

All claims for shortage or damage must be filed within 7 days upon receipt of goods.

PRODUCTS, CONTENT, AND SPECIFICATIONS

We reserve the right to improve items contained within this catalog without prior notification. Although we strive to ensure that product information within our catalog is correct, typographical errors may occur and provide you with inaccurate or incomplete information. Similarly, all features, content, specifications, of products described within this catalog are subject to change at any time without notice. Certain weights, measures and descriptions are approximate and are provided for your convenience purpose only.



I-III ABOUT US

4-7 ROD HOLDERS

Stainless Steel Rod Holders
Rod Holders with Caps
Outrigger Pole Holders



8-14 ANCHORING AND MOORING EQUIPMENT

Anchor Rollers and Wheel Replacements
Anchor Swivels and Chain Stopper
Deck Pipes
Mooring Bitt



15-19 BOARDING HARDWARE

Telescoping Ladders
Transom Ladders
Sliding Ladders
Under Platform Mount
Aluminum Dive Ladder
Replacement Gudgeons
Swim Platform Bracket



20-29 CLEATS, CHOCKS, LIFTING EYE, SKI TOWS

Herreshoff and Mooring Cleats
Skene, Bow, Angled Chocks
Lifting Eye and Sling
Bow and Stern Eye
Ski Tow
Pad Eyes



30-37 CANVAS TOP FITTINGS AND ACCESSORIES

Jaw Slides
Top Cap/ Outside Eye Ends
Top Inserts / Inside Eye Ends
Deck Hinge
Toggle and Quick Release Pins
Black Knobs with Set Screws
Eye Straps
Cover Support Poles



38-45 RAIL FITTINGS

Rail Bases
Tees, Elbows, and Connectors
Handrail Stanchions
Stanchion Poles and Bases
Grab Rails

**46-67 DOOR & CABINET HARDWARE, AND BRACKETS**

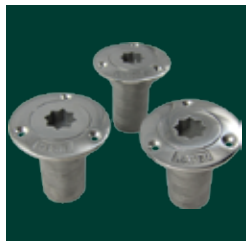
Hinges
Door Holders, Hooks, Barrel Bolts, Catches, Hasps
Latches
Table Brackets
Handles and Pulls

**68-70 STEERING WHEELS**

Destroyer Wheels
Sailboat Wheels
Control Knobs

**71-76 VENTILATION AND DRAINAGE**

Cowl Vents and Deck Plates
Midget, Louvered, Slotted Vents
Garboard Plus and Drain Plugs
Drain Cover

**77-84 FUEL FITTINGS**

Deck Fills
Fuel Vents
Exhausts
Thru-Hulls

**85-93 PORTLIGHTS AND DECK HATCHES**

Stainless Steel Portlights
Bronze Portlights
Stainless Steel Deck Hatches
Hatch Fittings and Fasteners

**94-102 MISCELLANEOUS HARDWARE**

Boat Hooks and Clips
Outboard Motor Bracket
Pelican Hooks
Bells
Deck Chair
Drink Holders
Lights
Antenna Mounts

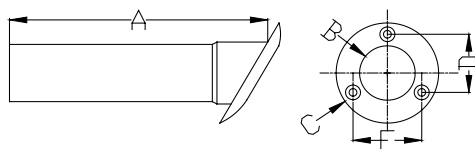
103-106 INDEX

Stainless Steel Cast Flush Mount Rod Holder—Heavy Duty, Open Drain



- Sold by Each
- 316 Stainless Steel Cast Flange
- 304 Stainless Steel Tube
- Fastener 1/4" FH
- Round Flange
- White PVC Liner

PART NO.	ANGLE	A	B	C	D	E
53320S	30°	9-1/4"	1-5/8"	4"	2-3/8"	2-3/4"
53321S	15°	9"	1-5/8"	4"	2-3/8"	2-3/4"
53322S	0°	8"	1-5/8"	4"	2-3/8"	2-3/4"

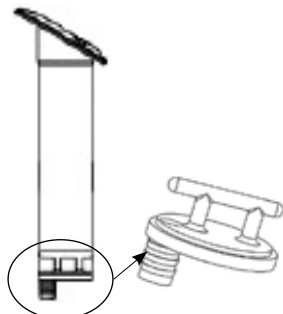


Stainless Steel Cast Flush Mount Rod Holder —Heavy Duty, Closed Drain Tail

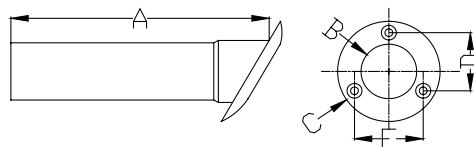


- Sold by Each
- 316 Stainless Steel Cast Flange
- 304 Stainless Steel Tube
- Fastener 1/4" FH
- Round Flange
- White PVC Liner
- Closed Bottom with 1/2" Drain Tail

PART NO.	ANGLE	A	B	C	D	E
53320SC	30°	9-1/4"	1-5/8"	4"	2-3/8"	2-3/4"
53321SC	15°	9"	1-5/8"	4"	2-3/8"	2-3/4"
53322SC	0°	8"	1-5/8"	4"	2-3/8"	2-3/4"



1/2" Drain Tail

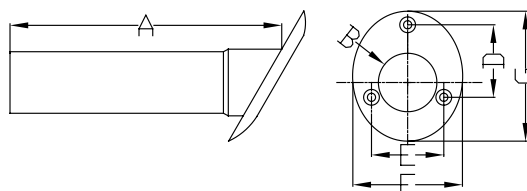


Stainless Steel Cast Flush Mount Rod Holder—Standard, Open Drain



- Sold by Each
- 316 Stainless Steel Cast Flange
- 304 Stainless Steel Tube
- Fastener 1/4" FH
- Oval Flange
- White PVC Liner

PART NO.	ANGLE	A	B	C	D	E	F
53315S	30°	8-7/8"	1-5/8"	4-1/4"	2-1/2"	2-5/8"	3-5/8"
53316S	15°	8-3/4"	1-5/8"	4-1/4"	2-1/2"	2-5/8"	3-5/8"
53317S	0°	8-1/4"	1-5/8"	4-1/4"	2-1/2"	2-5/8"	3-5/8"

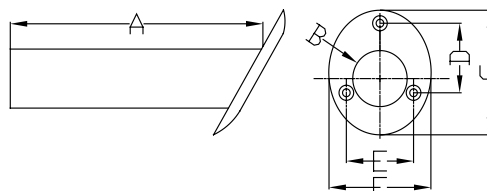


Stainless Steel Cast Flush Mount Rod Holder—Black PVC Liner



- Sold by Each
- 316 Stainless Steel Cast Flange
- 304 Stainless Steel Tube
- Fastener 1/4" FH
- Oval Flange
- Black PVC Liner

PART NO.	ANGLE	A	B	C	D	E	F
56135SP	30°	9"	1-5/8"	4-1/4"	2-1/2"	2-3/8"	3-1/2"

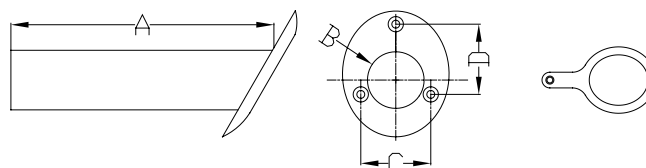


Stainless Steel Cast Flush Mount Rod Holder —Black PVC Liner and Cap



- Sold by Each
- 316 Stainless Steel Cast Flange
- 304 Stainless Steel Tube
- Fastener 1/4" FH
- Oval Flange
- Black PVC liner with Cap

PART NO.	ANGLE	A	B	C	D	E	F
56136SP	30°	9"	1-5/8"	4-1/4"	2-1/2"	2-3/8"	3-1/2"
56136SPC	Replacement PVC cap only for 56136SP						

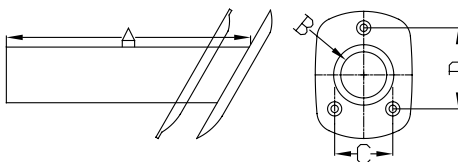


Stainless Steel Stamped Flush Mount Rod Holder



- Sold by Each
- 304 Stainless Steel Stamped Flange
- 304 Stainless Steel Tube
- Fastener 1/4" FH
- 30° Angle
- Oblong Flange
- Black PVC Liner

PART NO.	FLANGE SIZE	A	B	C	D
57738S	3-1/2" x 4-9/16"	9-5/16"	1-5/8"	2-1/8"	3-1/8"
57738SR	Replacement liner				

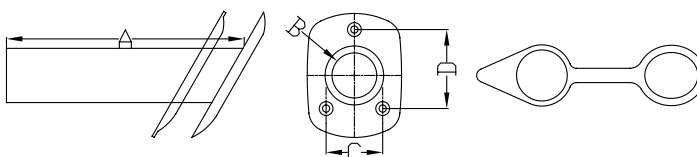


Stainless Steel Stamped Flush Mount Rod Holder with PVC Cap



- Sold by Each
- 304 Stainless Steel Stamped Flange
- 304 Stainless Steel Tube
- Fastener 1/4"
- Oblong Flange
- 30° Angle
- Black PVC Liner with Cap

PART NO.	FLANGE SIZE	A	B	C	D
57739S	3-1/16" x 4-9/16"	9-5/16"	1-5/8"	2-1/8"	3-1/8"
57739SR	Replacement liner with Cap				

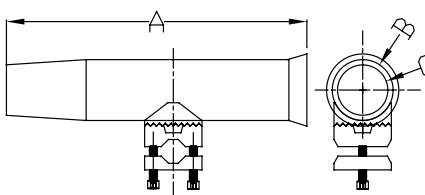


Stainless Steel Tapered Clamp-on Adjustable Rod Holder



- Sold by Each
- 316 Stainless Steel Clamp
- 304 Stainless Steel Tube
- Fastener 1/4"
- White Plastic Liner
- Versatile Design Allows a Full 360° Adjustment
- For 3/4"—1-1/4" Tube

PART NO.	A	B	C
53300SL	9-3/4"	2-1/4"	1-5/8"

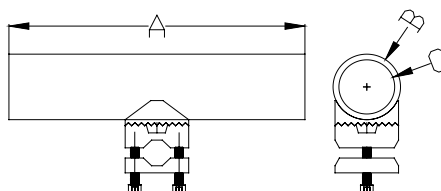


Stainless Steel Economic Clamp-On Adjustable Rod Holder



- Sold by Each
- 316 Stainless Steel Clamp
- 304 Stainless Steel Tube
- Fastener 1/4" FH
- Black Plastic Liner
- Versatile Design Allows a Full 360° Adjustment
- For 7/8"—1" Tube

PART NO.	A	B	C
53301SS	9-1/4"	2-1/4"	1-5/8"

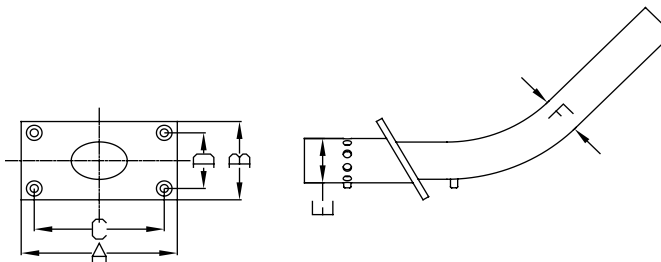


Flush Mount Outrigger Pole Holders with Spring Lock



- Sold by Pair
- 316 Stainless Steel Cast Base And Holder
- 304 Stainless Steel Tube
- Fastener 1/4" FH
- 1/4" Mounting Bolts
- Compatible Outrigger Poles With 1-1/8" Butt Diameter

PART NO.	A	B	C	D	E	F
53305SS	5-1/4"	2-5/8"	4-1/4"	1-7/8"	1-1/2"	1-3/16"
53305SPB	Base only					
53305SPH	Holder only					

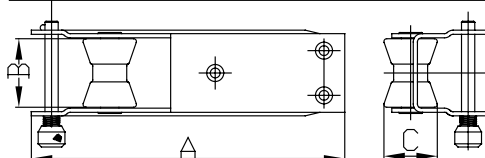


Anchor Roller



- Sold by Each
- 304 Stainless Steel Stamped
- Fastener 5/16" FH

PART NO.	THICKNESS	FINISH	A	B	C
ARSST-01	5/32"	Mirror	7"	2"	1-1/2"

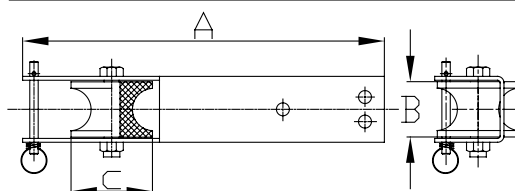


Long Fairlead Anchor Roller



- Sold by Each
- 304 Stainless Steel Stamped
- Fastener 3/8" FH

PART NO.	THICKNESS	FINISH	A	B	C
ARSW-03	5/32"	Satin	11"	1-3/4"	2-1/2"
AR7552S	1/8"	Mirror	11"	1-3/4"	2-1/2"

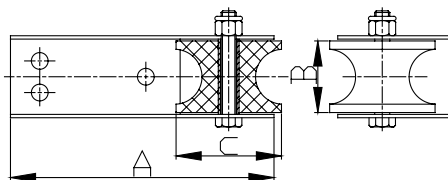


Small Fairlead Anchor Roller



- Sold by Each
- 304 Stainless Steel Stamped
- Fastener 3/8" FH

PART NO.	THICKNESS	FINISH	A	B	C
ARSW-02	5/32"	Satin	6-1/4"	1-3/4"	2-1/2"
AR7550S	5/64"	Mirror	6-1/4"	1-3/4"	2-1/2"

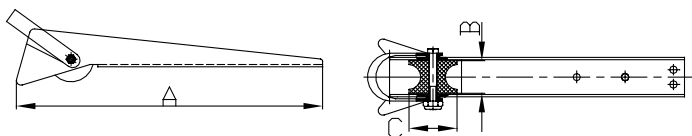


Small Anchor Roller



- Sold by Each
- 304 Stainless Steel Stamped
- Fastener 3/8" FH

PART NO.	THICKNESS	FINISH	A	B	C
AR7557S	1/8"	Satin	15-1/4"	1-3/4"	2-1/2"

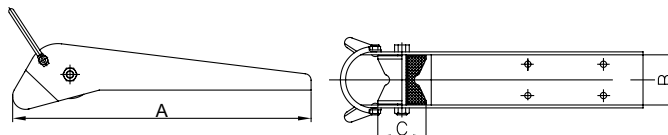


Medium Anchor Roller



- Sold by Each
- 304 Stainless Steel Stamped
- Fastener 3/8" FH

PART NO.	THICKNESS	FINISH	A	B	C
ARWU-04	3/16"	Satin	18"	3"	3"

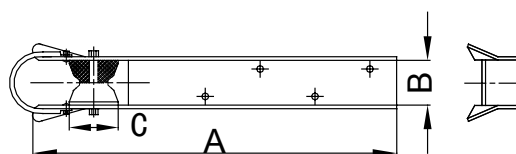


Narrow Anchor Roller



- Sold by Each
- 304 Stainless Steel Stamped
- Fastener 3/8" FH

PART NO.	THICKNESS	FINISH	A	B	C
ARWC-01	3/16"	Satin	19-7/8"	2-1/2"	2-3/4"
ARWC-01HP	3/16"	Mirror	19-7/8"	2-1/2"	2-3/4"

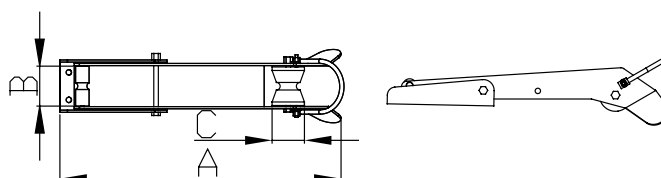


Pivoting Anchor Roller



- Sold by Each
- 304 Stainless Steel Stamped
- Fastener 3/8" FH

PART NO.	THICKNESS	FINISH	A	B	C
AR7561S	1/8"	Mirror	20-1/2"	2"	2-7/8"

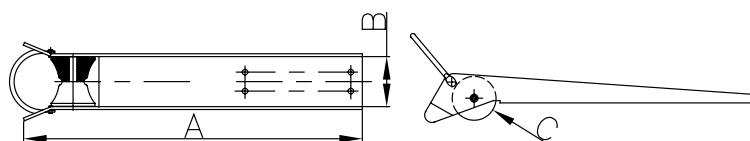


Long Platform Anchor Roller



- Sold by Each
- 304 Stainless Steel Stamped
- Fastener 3/8" FH

PART NO.	THICKNESS	FINISH	A	B	C
ARWU-03	3/16"	Satin	23-3/4"	3-3/8"	3"

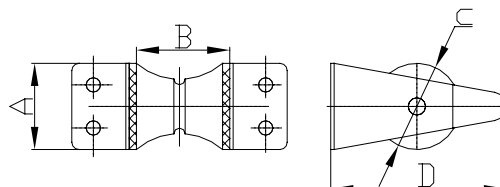


Platform Anchor Roller

- Sold by Each
- 304 Stainless Steel Stamped



PART NO.	FINISH	A	B	C	D	FASTENER
ARSW-04	Satin	3"	1-3/4"	2-1/2"	6"	3/8" FH
ARSW-05	Satin	3"	3-3/8"	3"	6"	7/16" FH
ARSW-06	Satin	5-1/2"	3-3/8"	3"	4"	

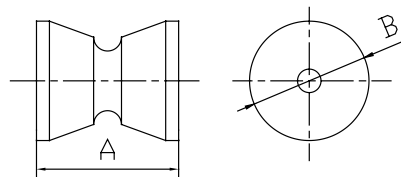


Replacement Wheels for Anchor Rollers

- Sold by Each
- Injection Molded Delrin Or Polyurethane (PU)
- All Wheels Will Be Switched To Delrin Once Current Inventory Is Depleted.



PART NO.	MATERIAL	A	B	ANCHOR MODEL
7550U	PU	1-3/4"	2-1/2"	AR7550S, ARSW-02, AR7552S, ARSW-03, AR7557S, ARSW-04
7551U-A	Delrin	2-13/16"	2-3/8"	Front/Big roller for AR7561S
7551U-B	Delrin	2-11/16"	1"	Rear/Small roller for AR7561S
7558U	Delrin	3"	3"	ARWU-04
7560U	PU	2-1/2"	2-3/4"	ARWC-01HP
7564U	PU	3-3/8"	3"	ARWU-03, ARSW-05, ARSW-06
1210U	Delrin	4"	4"	

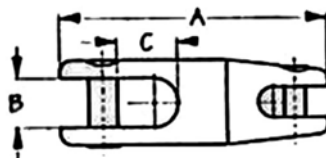


Anchor Swivel



- Sold by Each
- 316 Stainless Steel Cast

PART NO.	A	B	C	CHAIN SIZE	WORKING LOAD
AS7530S	3-9/16"	5/8"	13/16"	1/4"—5/16"	4500lb
AS7532S	4-11/16"	13/16"	1-1/16"	5/16"—7/16"	7000lb
AS7536S	5-1/2"	1-1/8"	1-3/16"	Up to 1/2"	10000lb

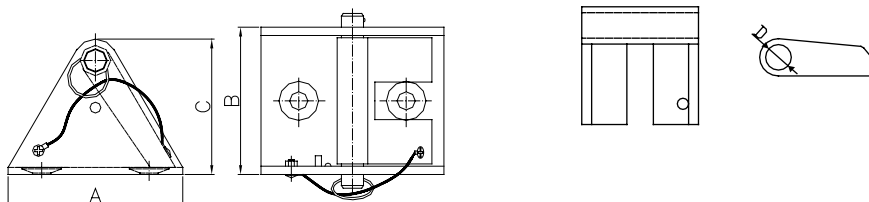


Deluxe Chain Stopper



- Sold by Each
- 316 Stainless Steel Cast
- Fastener 7/16" Bolt
- Works With Your Anchor Roller To Take The Tension Off Your Windlass.
- Mounts Alone Or Inside Most Anchor Rollers.
- Fits 1/4" To 3/8" Chain.
- Removable Pawl Flips Up When Not In Use.
- Prevents Damage To Windlass.

PART NO.	A	B	C	D
AS7502S	2-3/4"	3-1/8"	2-7/16"	1/2"

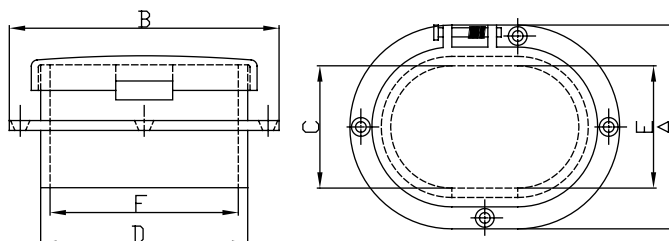


Spring Hinged Deck Pipe — Oval



- Sold by Each
- 316 Stainless Steel Cast
- Fastener #10 FH

PART NO.	A	B	C	D	E	F
AS7510S	4-1/16"	5-5/8"	2-3/4"	4-1/8"	2-7/16"	3-3/4"

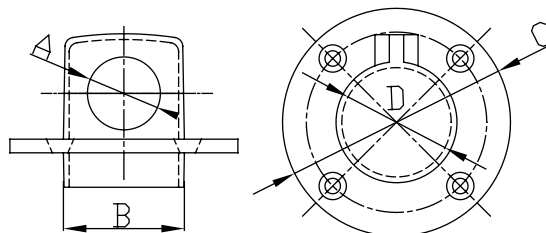


Spring Hinged Deck Pipe — Round

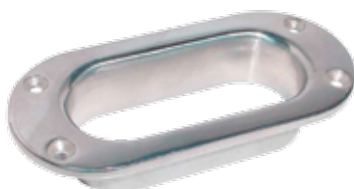


- Sold by Each
- 316 Stainless Steel Cast
- Fastener #10 FH

PART NO.	A	B	C	D
AS7520S	1"	1-3/4"	3-1/8"	1-1/2"

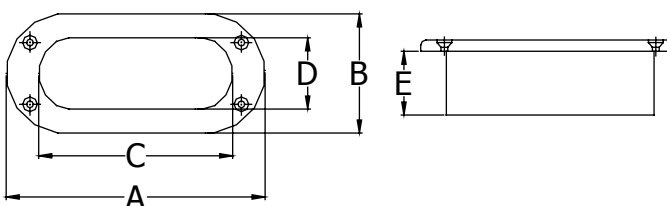


Oval Hawse Pipe



- Sold by Each
- 316 Stainless Steel Cast
- Fastener #8 FH

PART NO.	A	B	C	D	E
6200S	5-1/2"	2-1/2"	3-3/4"	1-1/2"	7/8"

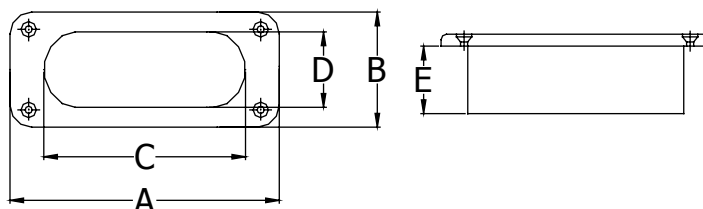


Rectangular Hawse Pipe



- Sold by Each
- 316 Stainless Steel Cast
- Fastener #10 FH

PART NO.	A	B	C	D	E
6202S	6"	3-1/4"	4"	2"	1-1/8"

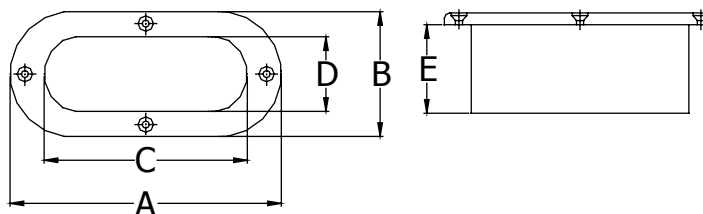


Oval Hawse Pipe



- Sold by Each
- 316 Stainless Steel Cast
- Fastener 1/4" FH

PART NO.	A	B	C	D	E
6204S	7"	4"	4-1/2"	1-1/2"	2-1/8"

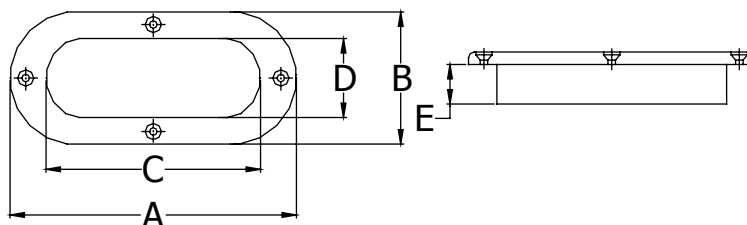


Oval Hawse Pipe



- Sold by Each
- 316 Stainless Steel Cast
- Fastener 1/4" FH

PART NO.	A	B	C	D	E
6206S	9-3/8"	5-1/4"	7"	3"	1"

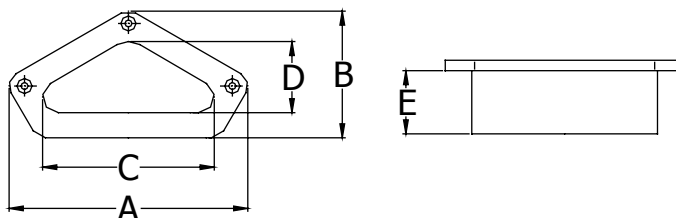


Triangular Hawse Pipe



- Sold by Each
- 316 Stainless Steel Cast
- Fastener #10 FH

PART NO.	A	B	C	D	E
6208S	8"	5"	5"	3"	2"

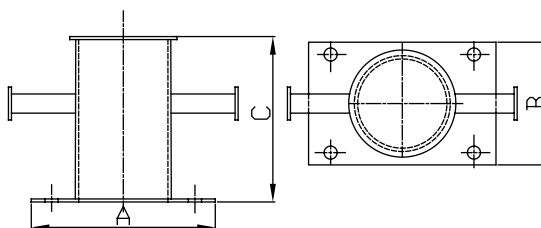


Mooring Bitt



- Sold by Each
- 304 Stainless Steel Tube 304 Stainless Steel Stamped
- Fastener 1/2" FH

PART NO.	A	B	C
7566S	8"	4-1/2"	6-3/16"

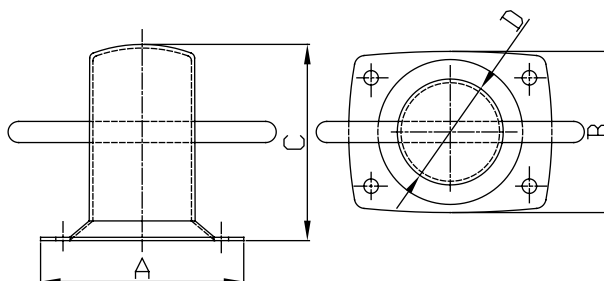


Small Mooring Bitt



- Sold by Each
- 304 Stainless Steel Tube 304 Stainless Steel Stamped
- Fastener 5/16" FH

PART NO.	A	B	C	D
7565S	4-13/16"	3-13/16"	4-3/4"	2-1/2"

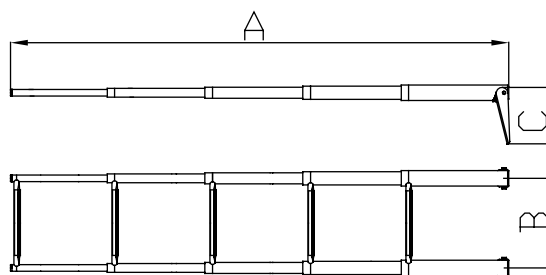


Over Platform Telescoping Ladder



- Sold by Each
- 304 Stainless Steel Tubing
- Ladder Folds Onto Swim Platform For Easy Stowing
- Bungee Cord Securing Strap Included
- Nylon Bushings Between Ladder Segments Provide An Additional Safety Function To Prevent Accidental Deployment

PART NO.	STEP NO.	A DEPLOYED	A STOWED	B	C	FASTENER
B00311R	2	23-1/2"	13-1/2"	10"	5-3/4"	1/4" FH
B00301R	3	34-5/8"	14-1/2"	10"	7"	1/4" FH
B00301R-5	3	35"	14-1/2"	10"	5-13/16"	1/4" FH
B00351R	4	45-1/2"	15-1/2"	10"	6-1/2"	5/16" FH
B00355R	5	17-1/4"	55-7/8"	10"	6-1/2"	

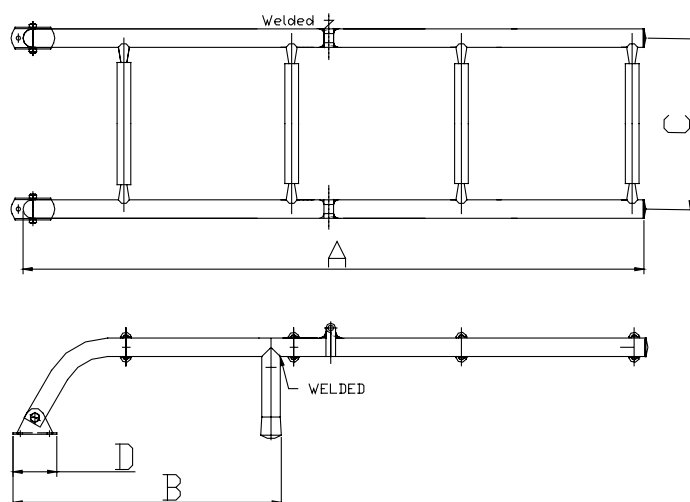


Transom Folding Ladder



- Sold by Each
- 304 Stainless Steel Tubing
- 316 Stainless Steel Cast Hinges
- Fastener 1/4" FH
- Ladder Folds Up For Easy Stowing

PART NO.	STEP NO.	A	B	C	D
B00361	4	33-1/2"	14-7/8"	10"	2-3/8"
B00361-G	Replacement gudgeon only				

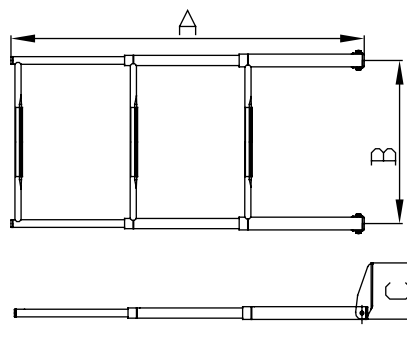


Wide Telescoping Ladder



- Sold by Each
- 304 Stainless Steel Tubing
- Ladder Folds Onto Swim Platform For Easy Stowing
- Bungee Cord Securing Strap Included
- Nylon Bushings Between Ladder Segments Provide An Additional Safety Function To Prevent Accidental Deployment

PART NO.	STEP NO.	A	A	B	C
		DEPLOYED	STOWED		
B00301WH	3	35"	15"	16"	7"
B00351WH	4	45-11/16"	15-1/4"	17-1/8"	6-1/2"

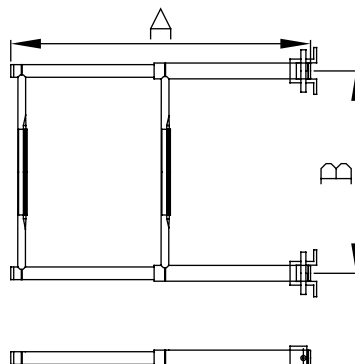


Under Platform Telescoping Ladder



- Sold by Each
- 304 Stainless Steel Tubing
- Ladder Slides Into The Bracket For Stowing
- Bungee Cord Securing Strap Included
- Nylon Bushings Between Ladder Segments Provide An Additional Safety Function To Prevent Accidental Deployment

PART NO.	STEP NO.	A	A	B	FASTENER
		DEPLOYED	STOWED		
B00331	2	23-1/2"	13-1/2"	10"	#10 FH
B00331-BKT	Replacement bracket and straps for B00331				1/4" FH
B00330	3	35"	14-1/2"	10"	#10 FH
B00330-BKT	Replacement bracket and straps for B00330				1/4" FH

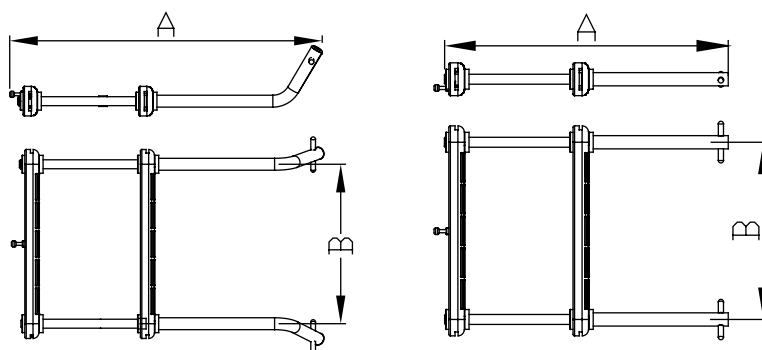


Under Platform Telescoping Ladder



- Sold by Each
- 304 Stainless Steel Tubing
- Fastener 5/16" FH
- Heavy Duty Mounting Hardware And Securing Strap Included
- Designed With Self-Locking Angled Support Brackets
- Additional Under Platform Mounting Brackets Included
- Available In Straight And Curved Mounting Options

PART NO.	STEP NO.	A	A	B	TYPE
		DEPLOYED	STOWED		
AM1101S	2	27-3/8"	18"	13-3/8"	Curved
AM1301S	2	23-5/8"	14-3/16"	13-3/8"	Straight
AM7215SA	Optional bracket for AM1101S & AM1301S				

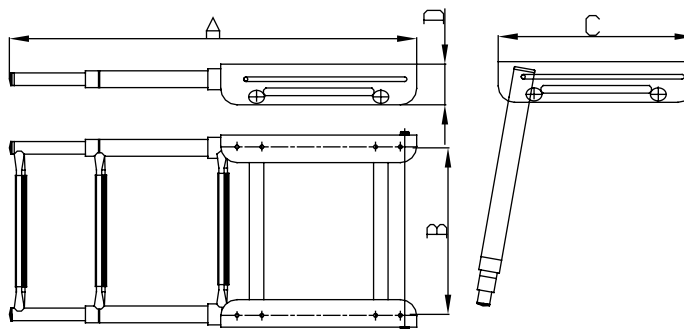


Under Platform Shelved Telescoping Sliding Ladder

- Sold by Each
- 304 Stainless Steel Tubing
- Fastener 1/4" FH
- Ladder Stores Neatly Into Its Frame
- Bungee Cord Secures The Ladder In Place



PART NO.	STEP NO.	A	A	B	C	D
		DEPLOYED	STOWED			
B00311UPM	2	27-3/8"	11-3/4"	10"	12-1/4"	2-7/16"
B00301UPM	3	34-1/2"	14-11/16"	10"	14-5/16"	2-15/16"
B00351UPM	4	45-1/8"	15-11/16"	10"	15"	3-3/16"

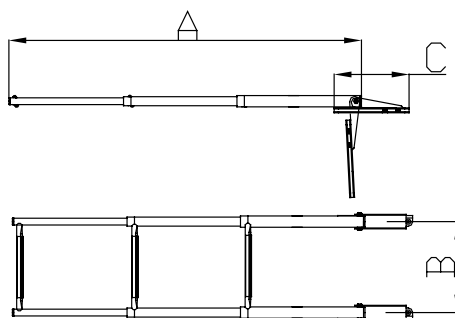


Over Platform Telescoping Sliding Ladder



- Sold by Each
- 304 Stainless Steel Tubing
- Fastener 1/4" FH
- Gudgeons And Ladder Slide Out For Additional Clearance Over The Side Of Your Boat

PART NO.	STEP NO.	A	A	B	C
		DEPLOYED	STOWED		
B00401SLD	3	35"	16-1/2"	10"	8-1/2"
B00451SLD	4	45-9/16"	15-3/4"	10"	8-1/2"

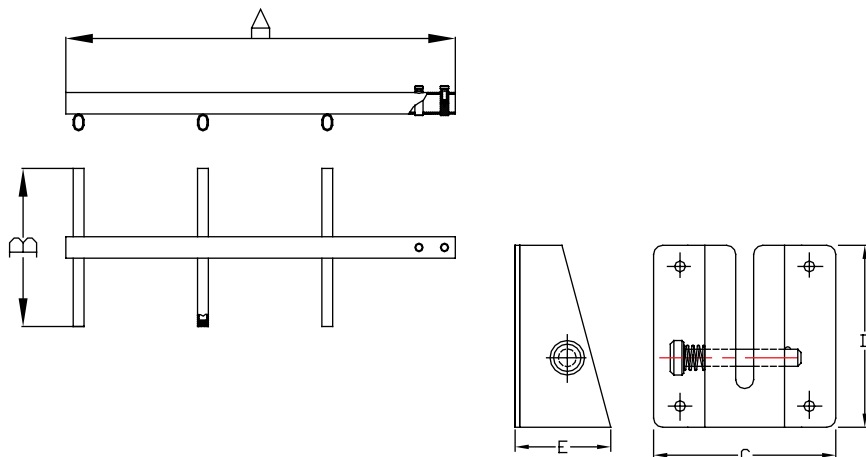


Sport / Diver Ladder



- Sold by Each
- Aluminum Extrusion
- 304 Stainless Steel Tubing
- Designed For All Vertical, Horizontal, And Break-Away Mounting Hardware Options
- Stainless Steel Quick Release Transom Mounting Bracket Included
- Steps With Rubber Pads

PART NO.	MATERIAL	STEP NO.	A	B	C	D	E	FASTENER
AM1303AL	Aluminum	3	36"	14"	4"	4"	2"	5/16" Bolt
AM1303S	Stainless	3	36"	14"	4"	4"	2"	5/16" Bolt
AM1303AL-B	Mounting bracket for AM1303AL							5/16" FH
AM1303S-B	Mounting bracket for AM1303S							5/16" FH

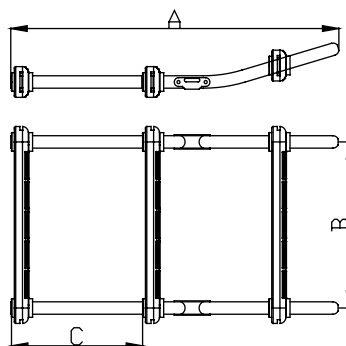


16. Aluminum Folding Ladder

- Sold by Each
- Aluminum Extrusion



PART NO.	A	B	C
AM1003AL	33-11/16"	13-3/8"	11"



Transom Gudgeon

- 304 Stainless Steel Stamped



Long Tab

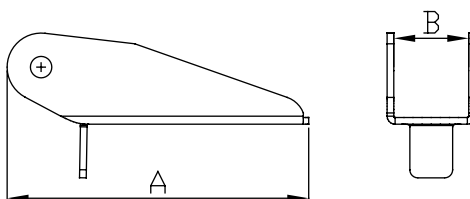


Short Tab



No Tab

PART NO.	A	B	CURVED TAB	LADDER	FASTENER
7731SR	5-3/4"	1-1/8"	SHORT	B00311R	5/16" FH
7732S	5-13/16"	1-3/8"	x		5/16" FH
7732SL	5-1/2"	1-3/8"	LONG		5/16" FH
7732SR	5-13/16"	1-3/8"	SHORT	B00301R-5	5/16" FH
7733SL	5-13/16"	1-3/8"	x		3/8" FH
7734SR	6-1/2"	1-3/4"	SHORT	B00351R	3/8" FH
7736S	7"	1-1/16"	x		5/16" FH
7736SR	7"	1-3/8"	SHORT	B00301R, B00301WH	5/16" FH
7737S	4-1/2"	1-1/16"	x		1/4" FH
7737SPE	4-1/2"	1-1/16"	LONG		

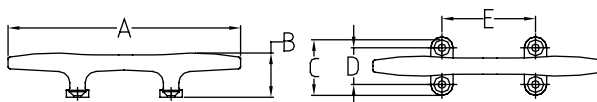


Herreshoff Cleat



- Sold by Each
- 316 Stainless Steel Cast

PART NO.	A	B	C	D	E	FASTENER
6028S	4-1/2"	1-1/16"	1-13/32"	7/8"	1-7/8"	#10 FH
6030S	6"	1-1/4"	1-7/8"	1-1/16"	2-1/4"	1/4" FH
6032S	8"	1-1/2"	2-3/16"	1-3/8"	2-7/8"	1/4" FH
6034S	10"	1-7/8"	2-11/16"	1-3/4"	3-11/16"	5/16" FH
6036S	12"	2-3/16"	2-3/4"	1-5/16"	3-3/4"	5/16" FH

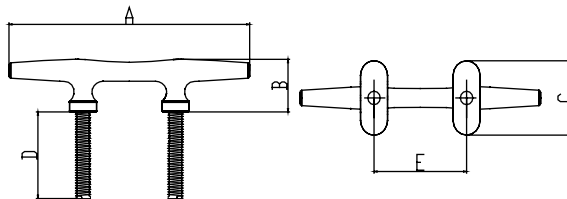


Studded Herreshoff Cleat



- Sold by Each
- 316 Stainless Steel Cast
- Fastener: 5/16"-18

PART NO.	A	B	C	D	E
6030SPE	6"	1-1/4"	1-3/4"	2"	2-1/4"
6032SPE	8"	1-1/2"	2"	2"	2-3/4"

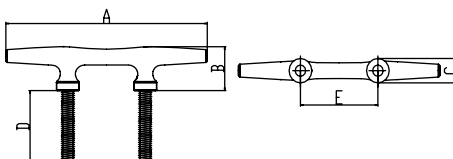


Studded Herreshoff Cleat



- Sold by Each
- 316 Stainless Steel Cast
- Fastener: 5/16"-18

PART NO.	A	B	C	D	E
6030RD	6"	1-1/4"	11/16"	2"	2-1/4"
6032RD	8"	1-1/2"	7/8"	2"	2-3/4"

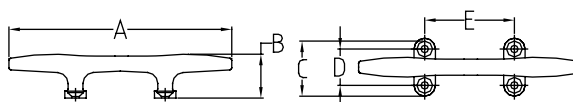


Heavy Duty Herreshoff Cleat



- Sold by Each
- 316 Stainless Steel Cast

PART NO.	A	B	C	D	E	FASTENER
6037S	8"	2"	2-9/16"	1-3/4"	3-5/16"	1/4" FH
6038S	10"	2-7/16"	2-7/8"	1-7/8"	3-3/4"	5/16" FH
6039S	12"	2-3/4"	3-1/2"	2-1/2"	4-13/16"	5/16" FH
6040S	15"	3-3/4"	3-7/8"	2-9/16"	4-27/32"	3/8" FH

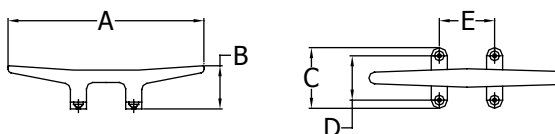


Mooring Cleat



- Sold by Each
- 316 Stainless Steel Cast

PART NO.	A	B	C	D	E	FASTENER
6044S	5-3/4"	1-1/4"	2-3/8"	1-5/8"	2"	1/4" FH
6046S	8"	1-5/8"	2-3/8"	1-5/8"	2-1/4"	1/4" FH
6048S	9-3/4"	1-3/4"	2-5/8"	1-3/4"	2-3/16"	1/4" FH

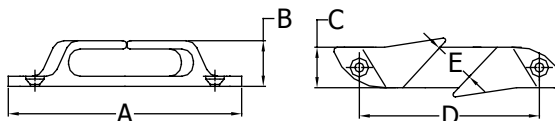


Skene Angled Bow Chocks

- Sold by Pair
- 316 Stainless SteelCast



PART NO.	A	B	C	D	E	FASTENER
6050S	4-1/2"	1-5/16"	3/4"	3-5/16"	1/2"	#10 FH
6052SH	6"	1-15/16"	1-1/16"	4-5/8"	1-1/4"	1/4" FH
6054S	7-7/8"	1-7/8"	1"	6-3/8"	1-1/8"	1/4" FH

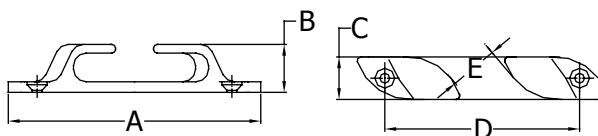


Angled Bow Chocks

- Sold by Pair
- 316 Stainless Steel Cast



PART NO.	A	B	C	D	E	FASTENER
6060S	4-1/2"	1"	3/4"	3-5/16"	1/2"	#10 FH
6062S	6"	1-1/8"	1-1/16"	4-3/4"	1"	1/4" FH
6064S	9"	1-3/4"	1-5/8"	7-3/16"	1-1/4"	5/16" FH

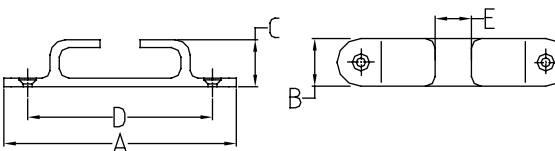


Bow Chocks

- Sold by Pair
- 316 Stainless Steel Cast



PART NO.	A	B	C	D	E	FASTENER
6070S	5"	15/16"	1-1/8"	3-15/16"	1-1/8"	1/4" FH
6072SP	6"	1-1/16"	1-1/8"	4-3/4"	1-3/8"	1/4" FH
6074S	9"	1-5/8"	1-3/4"	7-3/16"	1-1/4"	5/16" FH



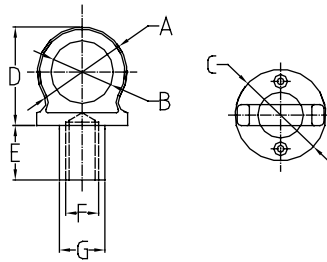


Lift Ring

- Sold by Each
- 316 Stainless Steel Cast
- Fastener #10 FH



PART NO.	A	B	C	D	E	F	G
6231S	2-7/32"	1-1/2"	2-3/16"	2-3/8"	7/8"	5/8-11UNC	31/32"
6231S-L	2-7/32"	1-3/8"	2-1/4"	3-3/16"	15/16"	5/8-11UNC	31/32"

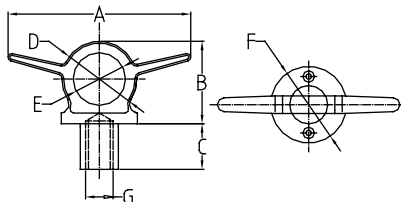


Lift Ring with Cleat

- Sold by Each
- 316 Stainless Steel Cast
- Fastener #10 FH



PART NO.	A	B	C	D	E	F	G
6322S	5-15/16"	1-7/8"	7/8"	1-31/32"	1-1/8"	2-3/32"	5/8-11UNC
6324S	7"	2-15/32"	31/32"	2-1/2"	1-1/2"	2-17/32"	5/8-11UNC

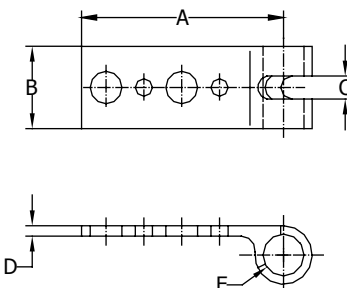


Sling

- Sold by Each
- 304 Stainless Steel Cast
- Fastener 1/2" & 3/8" FH



PART NO.	A	B	C	D	E
6325S	4-7/16"	1-3/4"	23/32"	5/16"	1-1/4"

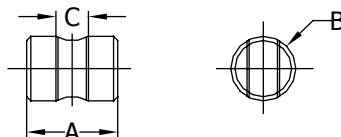


Cross Bar for Sling

- Sold by Each
- 304 Stainless Steel Machined
- Fastener 9/16" FH



PART NO.	A	B	C
6325S-C	1-3/4"	1-1/4"	5/8-11UNC



Lift Rod Only

- Sold by Each
- 304 Stainless Steel Machined



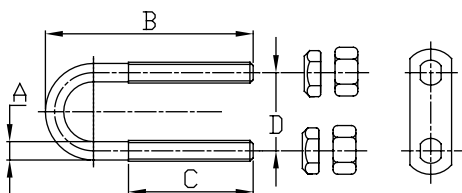
PART NO.	DESCRIPTION
6325S-R	SS 304 Rod for 6325S, Standard length: 12", 5/8-11UNC

Bow Eye



- Sold by Each
- 304 Stainless Steel Bent and Threaded

PART NO.	A	B	C	D	BOW PLATE	FASTENER
7846S-B	3/8"	3"	1-1/2"	1-1/2"	2	3/8" FH
7848S-B	3/8"	3-3/4"	2-1/4"	1-1/2"	2	3/8" FH
7850S-B	3/8"	4-1/2"	3"	1-1/2"	2	3/8" FH
7852S-B	1/2"	5-1/4"	3-1/2"	1-7/8"	2	1/2" FH
7863S-B	1/2"	4-1/2"	2-3/4"	1-7/8"	2	1/2" FH
7864S-B	1/2"	4-3/4"	3"	1-7/8"	2	1/2" FH
7854S-B	1/2"	5-7/8"	3-7/8"	1-7/8"	2	1/2" FH
7856S-B	1/2"	6-1/2"	4-3/8"	1-7/8"	2	1/2" FH
7858S-B	1/2"	7"	5-1/4"	1-7/8"	2	1/2" FH

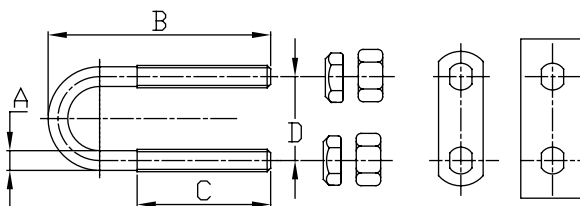


Stern Eye



- Sold by Each
- 304 Stainless Steel Bent and Threaded

PART NO.	A	B	C	D	BOW PLATE	STERN PLATE	FASTENER
7848S-S	3/8"	3-3/4"	2-1/4"	1-1/2"	1	1	3/8" FH
7850S-S	3/8"	4-1/2"	3"	1-1/2"	1	1	3/8" FH
7852S-S	1/2"	5-1/4"	3-1/2"	1-7/8"	1	1	1/2" FH
7861S-S	1/2"	3-3/4"	2"	1-7/8"	1	1	1/2" FH
7864S-S	1/2"	4-3/4"	3"	1-7/8"	1	1	
7867S-S	5/8"	8"	5-1/2"	1-7/8"	1	1	5/8" FH

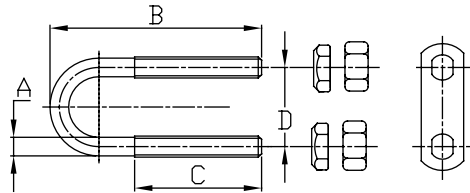


Long Shank Bow Eye



- Sold by Each
- 304 Stainless Steel Bent and Threaded

PART NO.	A	B	C	D	BOW PLATE	FASTENER
7859S-BL	3/8"	6"	3"	1-1/2"	2	3/8" FH
7866S-BL	1/2"	6-1/2"	3-1/2"	1-7/8"	2	1/2" FH

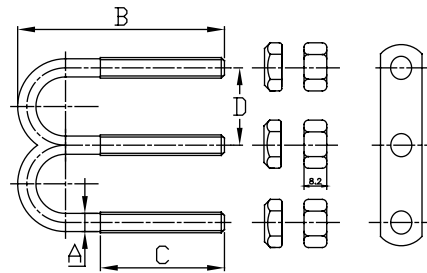


Double Shank Bow Eye



- Sold by Each
- 304 Stainless Steel Bent and Threaded

PART NO.	A	B	C	D	BOW PLATE	FASTENER
7848S-D	3/8"	3-3/4"	2-1/4"	1-3/8"	2	3/8" FH



Spring Washers



- Sold by Each
- 304 Stainless Steel

PART NO.	DESCRIPTION
7850S-SW	Optional spring washer for all 3/8" bow/stern eye
7852S-SW	Optional spring washer for all 1/2" bow/stern eye

Transom Mount Ski Tow



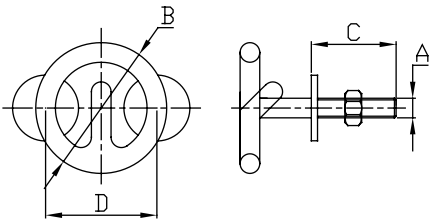
7767S



7767SPE

- Sold by Each
- 304 Stainless Steel Bent and Threaded

PART NO.	A	B	C	D
7767S	3/8"	2-1/2"	1-1/2"	2-1/8"
7767SPE	3/8"	2-1/2"	To Be Welded On Tubing	2-1/8"
7768S	3/8"	2-1/2"	2"	2-1/8"
7769S	3/8"	3"	2"	2-5/8"
7772S	1/2"	3-1/2"	3-1/2"	3"

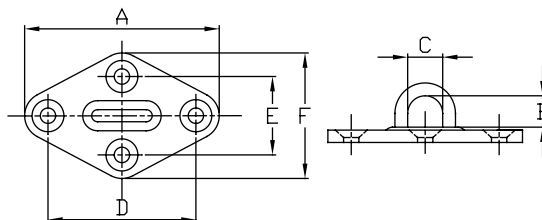


Diamond Pad Eyes

- Sold by Each
- 304 Stainless Steel Stamped



PART NO.	A	B	C	D	E	F	FASTENER
02321S	2-5/16"	1/2"	7/16"	1-13/16"	1-15/16"	1-7/16"	#8 FH
02322S	2-3/8"	9/16"	1"	2"	1"	1-9/16"	#10 FH
02323S	3-1/8"	11/16"	7/8"	2-1/2"	1-3/16"	2"	#12 FH

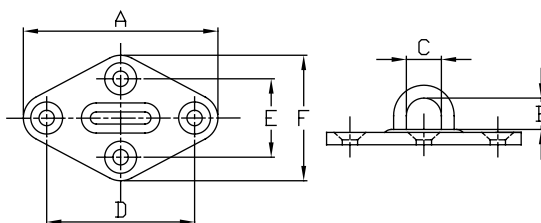


Diamond Pad Eyes

- Sold by Each
- 316 Stainless Steel Cast
- Fastener 1/4" FH



PART NO.	A	B	C	D	E	F
6330S	3-1/8"	7/16"	3/4"	2-3/8"	1-1/4"	2"
6332S	3-1/2"	1/2"	7/8"	2-5/8"	1-3/8"	2-3/16"
6334S	4"	5/8"	1"	3-1/16"	1-19/32"	2-3/8"

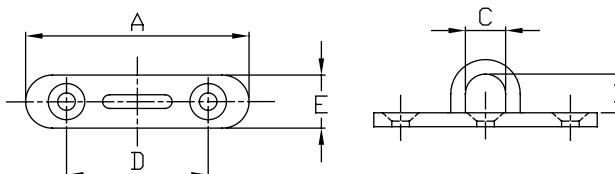


Oblong Pad Eyes



- Sold by Each
- 304 Stainless Steel Stamped
- Fastener #10 FH

PART NO.	A	B	C	D	E
02341S	1-3/4"	1/2"	11/16"	1-1/4"	9/16"
02342S	2-3/8"	9/16"	15/16"	1-3/4"	13/16"
02343S	3-1/8"	11/16"	1-3/16"	1-3/8"	1"

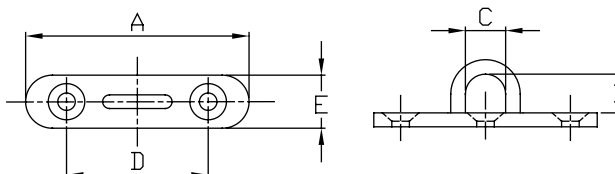


Oblong Pad Eyes



- Sold by Each
- 316 Stainless Steel Cast

PART NO.	A	B	C	D	E	FASTENER
6340S	2-15/16"	1/2"	5/8"	2-3/16"	7/8"	1/4" FH
6342S	3-1/2"	5/8"	3/4"	2-5/8"	1-1/4"	5/16" FH
6344S	4"	3/4"	7/8"	3"	1-3/8"	5/16" FH

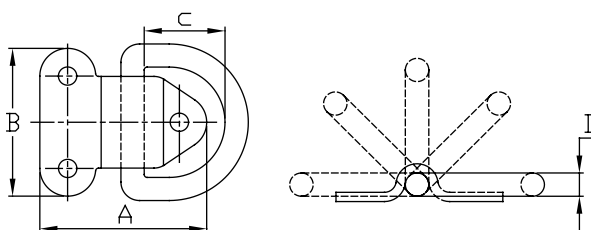


Folding Pad Eyes



- Sold by Each
- 304 Stainless Steel Stamped
- Fastener 1/4" FH

PART NO.	A	B	C	D
02926S	2-5/16"	2"	15/16"	1/8"
02927S	2-5/16"	2"	1"	1/8"

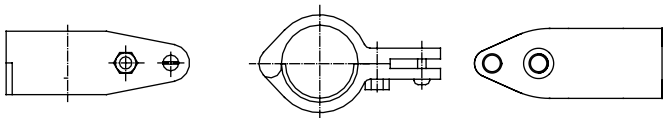


Take-Apart Jaw Slide



- Sold by Each
- 316 Stainless Steel Cast

PART NO.	FOR RAIL	W/PLATE, FOR RAIL	PLATE THICKNESS
6800S	1"	7/8"	1/16"
6802S	1-1/4"	1-1/8"	1/16"

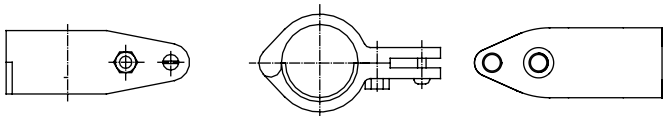


Hinged Jaw Slide



- Sold by Each
- 316 Stainless Steel Cast

PART NO.	FOR RAIL	W/PLATE, FOR RAIL	PLATE THICKNESS
6802SH	1-1/4"	1-1/8"	1/16"
6804SH	1-1/2"	1-3/8"	3/32"

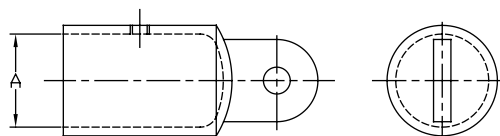


Top Cap



- Sold by Each
- 316 Stainless Steel Cast

PART NO.	DESCRIPTION	SET SCREW	A
6810S	Top cap	One	7/8"
6811S	Top cap	One	1"



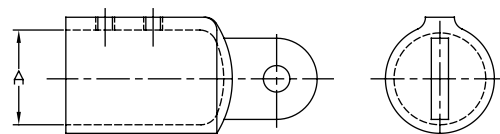
Heavy Duty Top Cap



6810SEU

- Sold by Each
- 316 Stainless Steel Cast

PART NO.	DESCRIPTION	SET SCREW	A
6810SEU	Top cap	Two	7/8"
6811SEU	Top cap	Two	1"

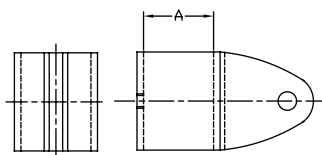


Jaw Slide



- Sold by Each
- 316 Stainless Steel Cast

PART NO.	DESCRIPTION	SET SCREW	A
6815S	Jaw slide w/bolt	One	7/8"
6816S	Jaw slide w/bolt	One	1"



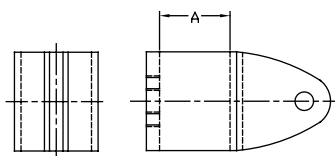
Heavy Duty Jaw Slide



6816SEU

- Sold by Each
- 316 Stainless Steel Cast

PART NO.	DESCRIPTION	SET SCREW	A
6815SEU	Jaw slide w/bolt	Two	7/8"
6816SEU	Jaw slide w/bolt	Two	1"

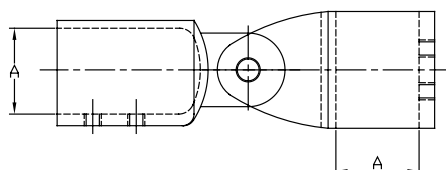


Top Cap with Jaw Slide Unit



- Sold by Each
- 316 Stainless Steel Cast

PART NO.	DESCRIPTION	A
6813SEU	Top cap w/jaw slide	7/8"
6817SEU	Top cap w/jaw slide	1"

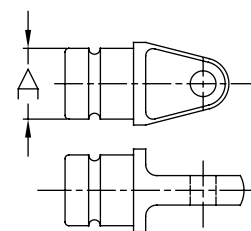


Top Insert



- Sold by Each
- 316 Stainless Steel Cast

PART NO.	DESCRIPTION	A
6820S	Top insert	3/4"
6821S	Top insert	7/8"
6822S	Top insert	1"

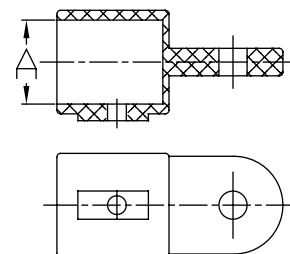


Nylon Top Cap



- Sold by Each
- Nylon Injection Molded

PART NO.	DESCRIPTION	A
58700B	Black top cap	3/4"
58701B	Black top cap	7/8"

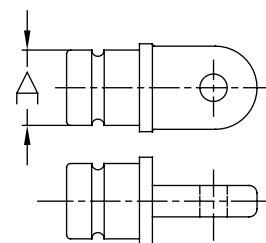


Nylon Top Insert



- Sold by Each
- Nylon Injection Molded

PART NO.	DESCRIPTION	A
58703B	Black top insert	3/4"
58704B	Black top insert	7/8"

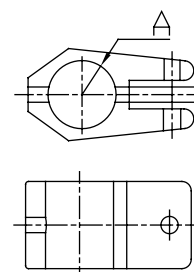


Nylon Jaw Slide



- Sold by Each
- Nylon Injection Molded

PART NO.	DESCRIPTION	A
58706B	Black jaw slide	3/4"
58707B	Black jaw slide	7/8"

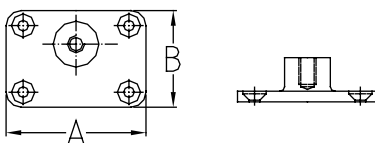


Heavy Duty Side Mount Deck Hinge



- Sold by Each
- 316 Stainless Steel Cast
- Fastener 1/4" FH

PART NO.	A	B	PIN SIZE
6825S	2-13/16"	1-7/8"	1/4"

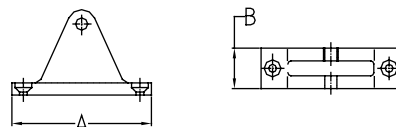


Deck Hinge 90°



- Sold by Each
- 316 Stainless Steel Cast
- Fastener #10 FH

PART NO.	A	B	PIN SIZE
6828S	2-1/4"	3/4"	1/4"

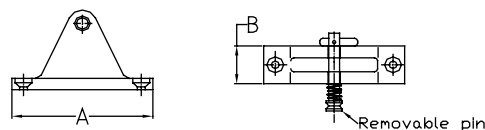


Deck Hinge with Removable Pin 90°



- Sold by Each
- 316 Stainless Steel Cast

PART NO.	A	B	PIN SIZE	FASTENER
6830S	2-1/4"	3/4"	1/4"	#10 FH ea
6830S-PIN	Removable pin only			

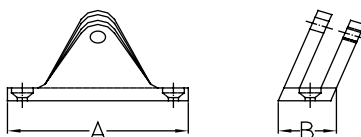


Angle Base Deck Hinge 80°



- Sold by Each
- 316 Stainless Steel Cast
- Fastener #10 FH

PART NO.	A	B	PIN SIZE
6832S	2-1/4"	3/4"	1/4"

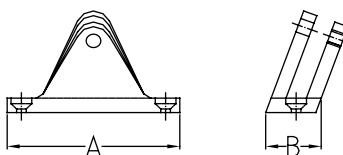


Angle Base Deck Hinge 80° with Removable Pin



- Sold by Each
- 316 Stainless Steel Cast
- Fastener #10 FH

PART NO.	A	B	PIN SIZE
6834S	2-1/4"	3/4"	1/4"

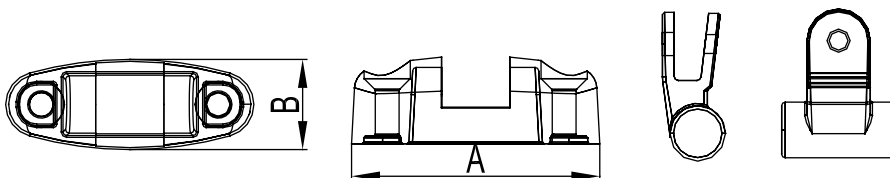


Adjustable Deck Hinge



- Sold by Each
- 316 Stainless Steel Cast

PART NO.	A	B	PIN SIZE
6839S	2-3/4"	1"	1/4"



Toggle Pin with Lanyard



56090T

- Sold by Each
- 304 Stainless Steel Machined

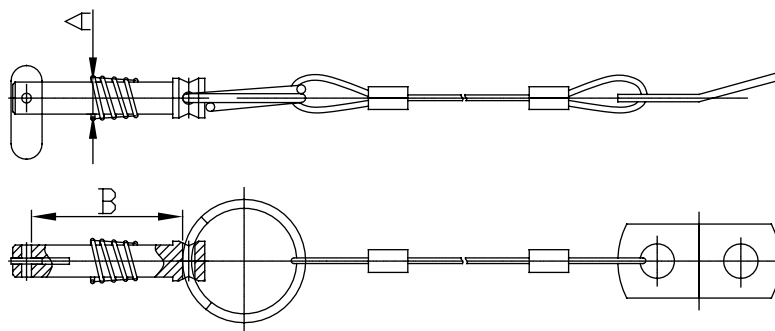
PART NO.	DESCRIPTION	A	B
56090T	Toggle pin only	1/4"	3/4"
56090T-LT	Pin with 6" lanyard TAB	1/4"	3/4"
56090T-LE	Pin with 6" lanyard EYE	1/4"	3/4"



56090T-LT



56090T-LE

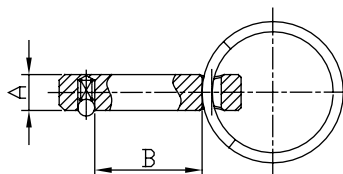


Quick Release Pin



- Sold by Each
- 304 Stainless Steel Machined

PART NO.	DESCRIPTION	A	B
56093P	Quick release pin only	1/4"	3/4"
56094P	Quick release pin only	1/4"	7/8"
56095P	Quick release pin only	1/4"	1"



Lanyard with Eye and Tab

- Sold by Each
- 304 Stainless Steel Machined

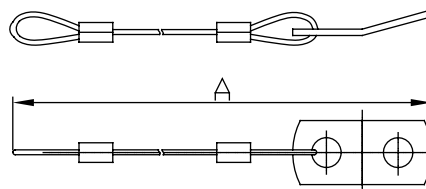


56097T



56097E

PART NO.	DESCRIPTION	A
56097T	6" Nylon Coated Lanyard with Tab	6"
56097E	6" Nylon Coated Lanyard with Eye	6"



Black Knob Set Screw Shaft

- Sold by Each
- 304 Stainless Steel Machined

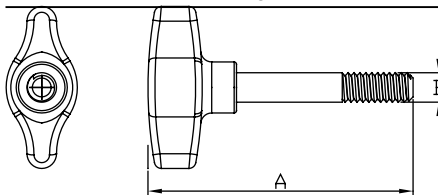


56098R



56098W

PART NO.	DESCRIPTION	A	B
56098R	Round Knob	15/16"	1/4" - 20
56098W	Winged Knob	1-3/8"	1/4" - 20

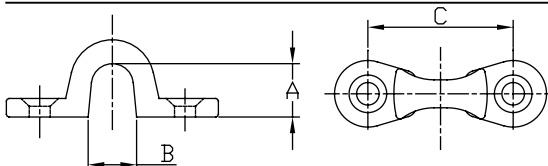


304 Stainless Steel Eye Straps

- Sold by Each
- 304 Stainless Steel Machined



PART NO.	STOCK DIA	A	B	C
56105S	3/16"	1/2"	5/8"	1-9/16"
56105SPE	3/16"	7/16"	13/16"	1-6/16"
56106S	1/4"	5/8"	15/16"	1-3/4"
56107S	5/16"	21/32"	1-1/32"	2-31/32"



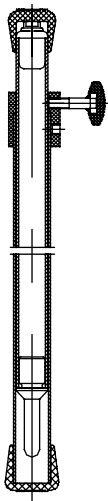
Boat Cover Support Poles



3-in-1 Adjustable

- Sold by Each
- Aluminum Extrusion
- 3-In-1 with a male canvas snap, a grommet tip, and a standard end cap
- Prolong the life of your boat cover by preventing water pockets
- Use knobs to adjust to desired height

PART NO.	DIMENSION
56110AP	Adjusts from 28" to 55"
56111AP	Adjusts from 40" to 70"



Round Rail Base

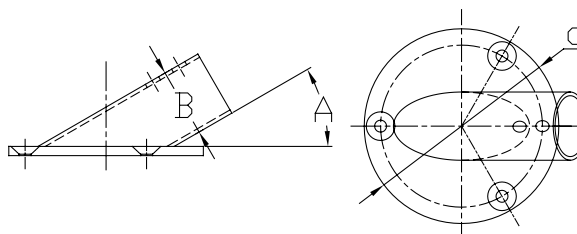


- Sold by Each
- 316 Stainless Steel Cast

PART NO.	ANGLE	B	C	FASTENER
6840S	30°	7/8"	2-1/2"	#10 FH
6841S	45°	7/8"	2-1/2"	#10 FH
6842S	60°	7/8"	2-1/2"	#12 FH
6843S	90°	7/8"	2-1/2"	#12 FH

PART NO.	ANGLE	B	C	FASTENER
6845S	30°	1"	2-3/4"	1/4" FH
6846S	45°	1"	2-3/4"	1/4" FH
6847S	60°	1"	2-3/4"	1/4" FH
6848S	90°	1"	2-3/4"	1/4" FH

PART NO.	ANGLE	B	C	FASTENER
6849S	90°	1-1/4"	3"	1/4" FH



Rectangular Rail Base

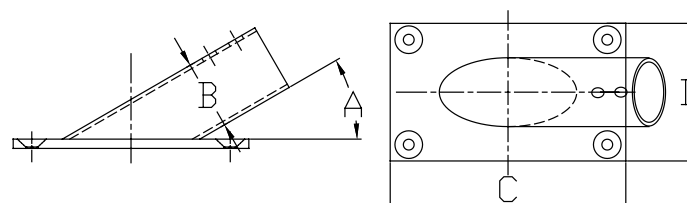


- Sold by Each
- 316 Stainless Steel Cast

PART NO.	ANGLE	B	C	D	FASTENER
6850S	30°	7/8"	3"	1-3/4"	#12 FH
6851S	45°	7/8"	3"	1-3/4"	#12 FH
6852S	60°	7/8"	3"	1-3/4"	#10 FH
6853S	90°	7/8"	3"	1-3/4"	#12 FH

PART NO.	ANGLE	B	C	D	FASTENER
6855S	30°	1"	3-1/2"	1-7/8"	1/4" FH
6856S	45°	1"	3-1/2"	1-7/8"	1/4" FH
6857S	60°	1"	3-1/2"	1-7/8"	1/4" FH
6858S	90°	1"	3-1/2"	1-7/8"	1/4" FH

PART NO.	ANGLE	B	C	D	FASTENER
6859S	90°	1-1/4"	3-1/4"	1-7/8"	1/4" FH

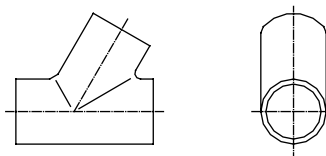


Handrail Tee Angled



- Sold by Each
- 316 Stainless Steel Cast

PART NO.	ANGLE	TUBE O.D.
6870S	60°	7/8"
6871S	60°	1"

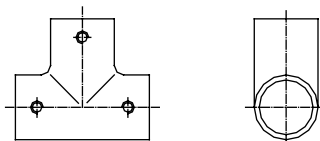


Handrail Tee



- Sold by Each
- 316 Stainless Steel Cast

PART NO.	ANGLE	TUBE O.D.
6872S	90°	7/8"
6873S	90°	1"
6874S	90°	1-1/4"

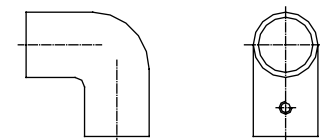


2-Way Handrail Elbow



- Sold by Each
- 316 Stainless Steel Cast

PART NO.	ANGLE	TUBE O.D.
6876S	90°	7/8"
6877S	90°	1"
6880S	90°	1-1/4"

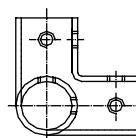
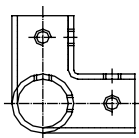


3-Way Handrail Elbow



- Sold by Each
- 316 Stainless Steel Cast

PART NO.	ANGLE	TUBE O.D.
6878S	90°	7/8"
6879S	90°	1"

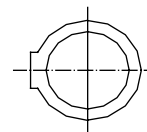
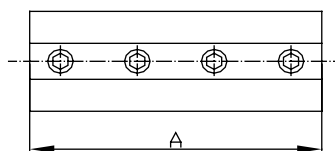


Heavy Duty Tube Connector



- Sold by Each
- 316 Stainless Steel Cast

PART NO.	A	TUBE O.D.
6895S	3"	7/8"
6896S	3"	1"



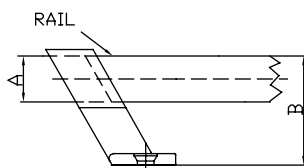
Stainless Steel 316 Rail Stanchions

- Sold by Each
- 316 Stainless Steel Cast
- Uses 1/4"-28 set screw for rail installation.
- Each base is pre-drilled with two countersunk holes for #10 screws
- Port-side Stanchions (-P) have set screws on the left side of bushing
- Starboard Stanchions (-S) have set screws on the right side of bushing



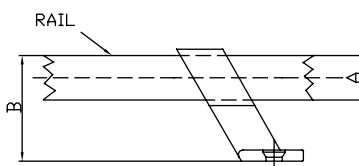
6862S

PART NO.	ANGLE	POSITION	SET SCREWS	A	B	FASTENER
6862S	120°	Forward	N/A	7/8"	1-13/16"	#10 FH
6867S	120°	Forward	N/A	1"	2-3/16"	#10 FH



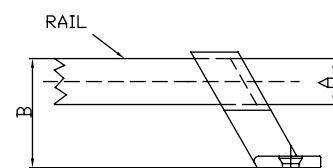
6861S-P

PART NO.	ANGLE	POSITION	SET SCREWS	A	B	FASTENER
6861S	60°	Center	N/A	7/8"	1-13/16"	#10 FH
6861S-P	60°	Center	Left Hand	7/8"	1-13/16"	#10 FH
6861S-S	60°	Center	Right Hand	7/8"	1-13/16"	#10 FH
6866S	60°	Center	N/A	1"	2-3/16"	1/4" FH



6860S-P

PART NO.	ANGLE	POSITION	SET SCREWS	A	B	FASTENER
6860S	60°	Aft	N/A	7/8"	1-13/16"	#12 FH
6860S-P	60°	Aft	Left Hand	7/8"	1-13/16"	#12 FH
6860S-S	60°	Aft	Right Hand	7/8"	1-13/16"	#12 FH
6865S	60°	Aft	N/A	1"	2-3/16"	1/4" FH

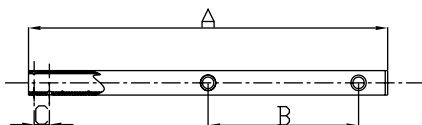


Cylindrical Tip Stanchion



- Sold by Each
- 304 Stainless Steel Tubing
- Stainless Steel Tube 1" O.D.
- With double lifeline holes

PART NO.	A	B	C
6015S	23-1/2"	11-3/32"	1"

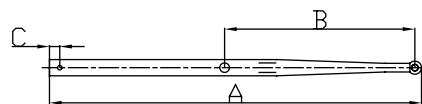


Tapered Tip Stanchion



- Sold by Each
- 304 Stainless Steel Tubing
- Stainless Steel Tube 1" O.D.
- With double lifeline holes

PART NO.	A	B	C
6016S	24"	12-11/32"	21/32"

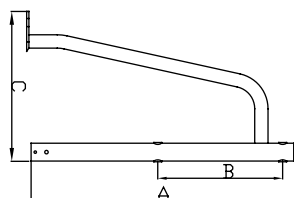


Gate Stanchion



- Sold by Each
- 304 Stainless Steel Tubing
- Stainless Steel Tube 1" O.D.
- With double lifeline holes

PART NO.	A	B	C	RAIL SIDE
6017SR	24"	11-3/32"	13-1/2"	Right
6017SL	24"	11-3/32"	13-1/2"	Left

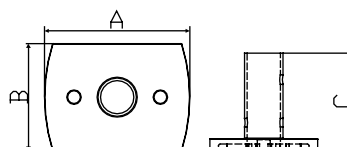


Cast Stanchion Base



- Sold by Each
- 316 Stainless Steel Cast
- Stainless Steel Base for 6015S, 6017SR, 6017SL
- Fastener 1/4" FH

PART NO.	A	B	C
6018S	3-11/32"	2-1/2"	2-1/4"

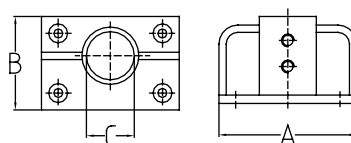


Cast Stanchion Base



- Sold by Each
- 316 Stainless Steel Cast
- Stainless Steel Base for all the stanchions with 1" O.D. tube
- Fastener 1/4" FH
- Square deck plate, double baled

PART NO.	A	B	C
6020S	3-7/16"	3"	1"

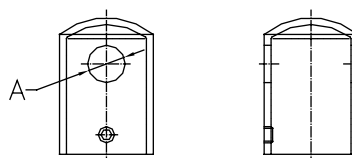


Heavy Duty Stanchion Cap



- Sold by Each
- 316 Stainless Steel Cast

PART NO.	A	TUBE O.D.
6897S	5/16"	1"

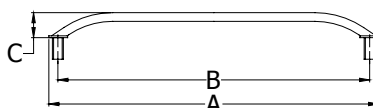


Oval Grab Rail



- Sold by Each
- 304 Stainless Steel Tubing
- Fastener 5/16" Nut each
- Bolt: 5/16"-18, 1-7/8" Length
- 1" x 3/4" Tube

PART NO.	A	B	C	DEGREE
7870S	12"	10-3/4"	2-1/8"	35°
7872S	17-1/4"	16"	2-1/8"	35°
7873S	18"	16-3/4"	2-1/8"	35°
7875S	24"	22-3/4"	2-1/8"	35°
7878S	36"	34-3/4"	2-1/8"	35°

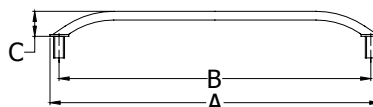


Angled Grab Rail



- Sold by Each
- 304 Stainless Steel Tubing
- Fastener 5/16" Nut each
- Bolt: 5/16"-18, 1-3/8" Length
- 7/8" Tube

PART NO.	A	B	C	DEGREE
7882S	9-3/8"	8"	2-1/2"	45°
7884S	12-3/8"	11"	2-1/2"	45°
7886S	14-1/4"	12-7/8"	2-1/2"	45°
7888S	18-3/8"	17"	2-1/2"	45°

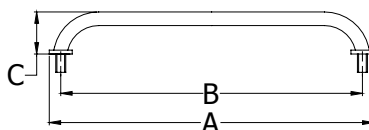


Round Grab Rail



- Sold by Each
- 304 Stainless Steel Tubing
- Bolt: 3/8"=16, 1-3/8" Length
- 1" Tube

PART NO.	A	B	C	FASTENER
7892S	15-1/4"	14"	3"	3/8" Nut
7892SPE	Same As 7892S with threaded flange / no stud			3/8" Bolt
7895S	25-1/4"	24"	3"	3/8" Nut
7895SPE	Same As 7895S with threaded flange / no stud			3/8" Bolt
7899S	35-1/4"	34"	3"	3/8" Nut
7899SPE	Same As 7899S with threaded flange / no stud			3/8" Bolt

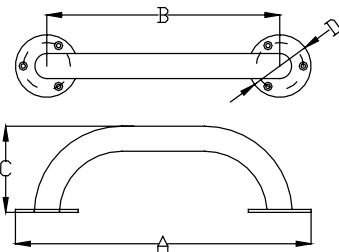


Round Flange Grab Rail



- Sold by Each
- 304 Stainless Steel Tubing
- Fastener #8 FH

PART NO.	A	B	C	D
78810S	12"	9-1/2"	3-7/16"	2-1/2"
78813S	18"	15-1/2"	3-7/16"	2-1/2"
78815S	24"	21-1/2"	3-7/16"	2-1/2"
78818S	36"	33-1/2"	4-1/2"	2-1/2"
78819S	48"	45-1/2"	4-1/2"	2-1/2"

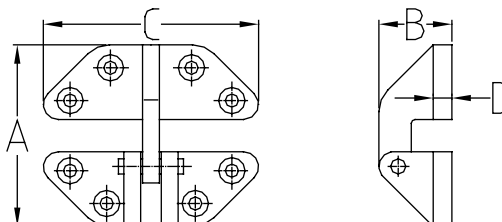


Hatch Hinge



- Sold by Pair
- 316 Stainless Steel Cast
- Quick-release pin for easy separation

PART NO.	A	B	C	D	FASTENER
6080S	2-5/8"	1-5/32"	2-7/8"	1/4"	#10 FH pr

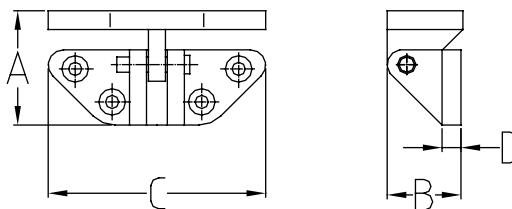


Angle Base Hatch Hinge



- Sold by Pair
- 316 Stainless Steel Cast
- Quick-release pin for easy separation

PART NO.	A	B	C	D	FASTENER
6082S	1-5/8"	1-5/32"	2-7/8"	1/4"	#10 FH pr



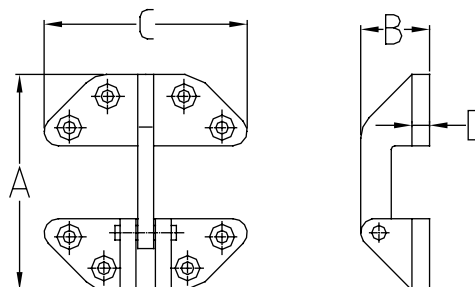
Long Reach Hatch Hinge



- Sold by Pair
- 316 Stainless Steel Cast

PART NO.	A	B	C	D	FASTENER
6084S	3-5/8"	1-5/32"	2-7/8"	1/4"	#10 FH pr
6084SPE	3-5/8"	1-5/32"	2-7/8"	1/4"	1/4" FH pr

The groove of 6084SPE is 3/32" wider than 6084S to accommodate for powder coating thickness.

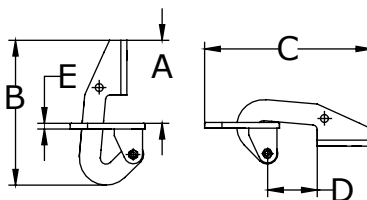


Hidden Engine Hatch Hinge



- Sold by Pair
- 316 Stainless Steel Cast
- Fastener #10 FH

PART NO.	A	B	C	D	E
6085S	2-3/4"	5"	6-1/2"	1-11/16"	1/4"

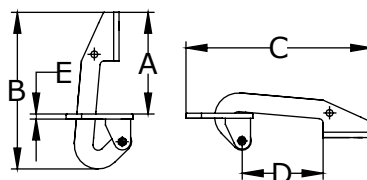


Hidden Engine Hatch Hinge – Long



- Sold by Pair
- 316 Stainless Steel Cast
- Fastener #12 FH

PART NO.	A	B	C	D	E
6086S	4-15/16"	7-3/8"	8-5/8"	3-7/8"	1/4"

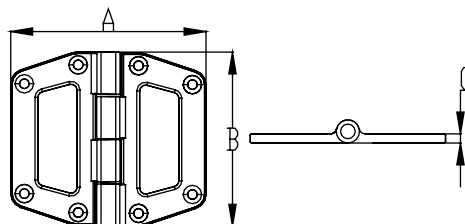


Super Duty Hatch Hinge



- Sold by Each
- 316 Stainless Steel Cast
- Fastener 1/4" FH

PART NO.	A	B	C
6087S	5-5/16"	4-3/4"	1/4"

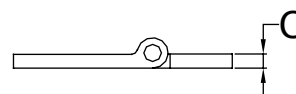
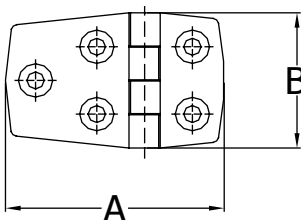


Cast Short Side Door Hinge



- Sold by Pair
- 316 Stainless Steel Cast

PART NO.	A	B	C	FASTENER
6104S	2-3/8"	1-1/2"	3/16"	#10 FH
6106S	2-7/8"	1-1/2"	3/16"	#10 FH

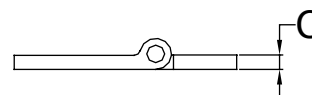
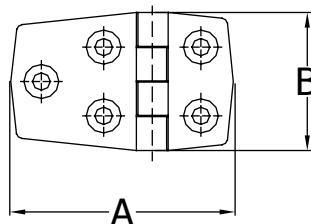


Stamped Short Side Door Hinge



- Sold by Pair
- 304 Stainless Steel Stamped

PART NO.	A	B	C	FASTENER
7722ES	2-1/4"	1-7/16"	1/16"	#12 FH

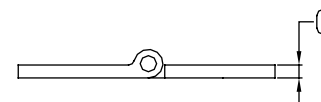
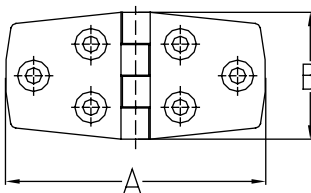


Cast Door Hinge



- Sold by Pair
- 316 Stainless Steel Cast

PART NO.	A	B	C	FASTENER
6108S	3"	1-1/2"	3/16"	#10 FH
6110S	4-1/8"	1-1/2"	3/16"	#10 FH

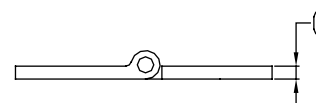
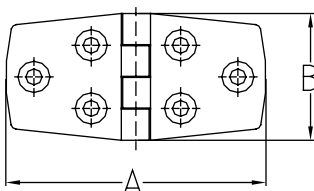


Stamped Door Hinge



- Sold by Pair
- 304 Stainless Steel Stamped

PART NO.	A	B	C	FASTENER
7719ES	3"	1-7/16"	1/16"	#12 FH

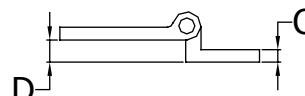
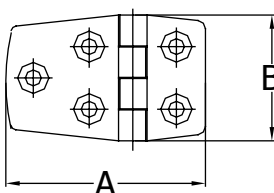


Offset Hinge



- Sold by Pair
- 316 Stainless Steel Cast

PART NO.	A	B	C	D	FASTENER
6100S	2-1/8"	1-1/2"	3/16"	3/8"	#10 FH

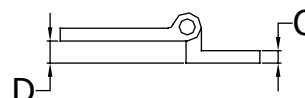
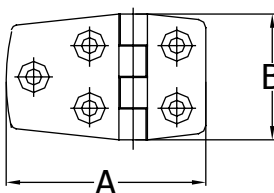


Stamped Offset Hinge



- Sold by Pair
- 304 Stainless Steel Stamped

PART NO.	A	B	C	D	FASTENER
7723ES	2-5/8"	1-7/16"	1/16"	3/4"	#12 FH
7724ES	2-5/8"	1-7/16"	1/16"	5/8"	#12 FH
7725ES	2-5/8"	1-7/16"	1/16"	1/2"	#12 FH

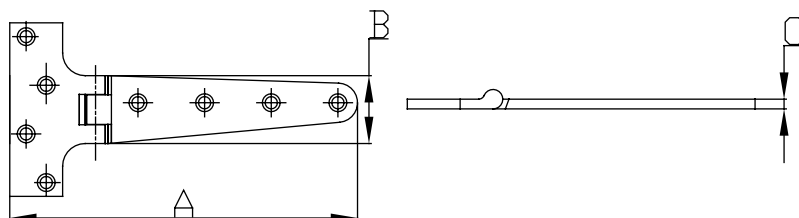


T-Hinge



- Sold by Pair
- 316 Stainless Steel Cast

PART NO.	A	B	C	FASTENER
6126S	7-3/4"	3-7/8"	7/32"	#12 FH

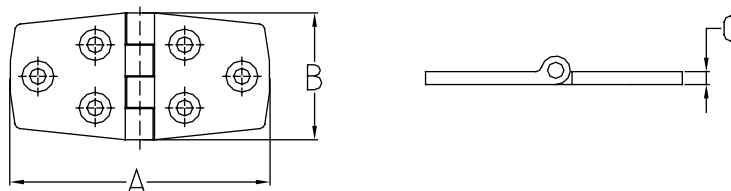


Locker Hinge



- Sold by Pair
- 304 Stainless Steel Stamped

PART NO.	A	B	C	FASTENER
7731ES	6"	3"	1/16"	#12 FH

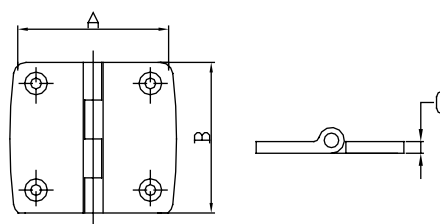


Butt Hinge



- Sold by Pair
- 316 Stainless Steel Cast

PART NO.	A	B	C	FASTENER
6114S	1-1/2"	1-1/2"	3/16"	#12 FH
6116S	2"	2"	3/16"	#12 FH

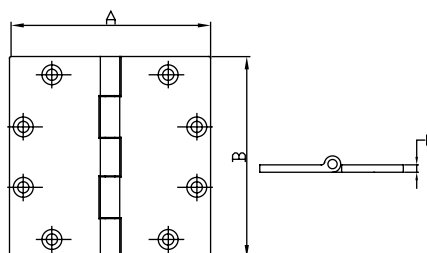


Large Butt Hinge



- Sold by Each
- 316 Stainless Steel Cast

PART NO.	A	B	C	FASTENER
6117S	4"	4"	5/32"	1/4" FH
6118S	5"	5"	5/32"	1/4" FH

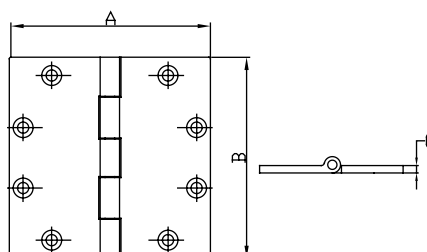


Flush Mount Butt Hinge



- Sold by Each
- 316 Stainless Steel Cast

PART NO.	A	B	C	FASTENER
6117SR	4"	4"	5/32"	5/16" FH
6118SR	5"	5"	5/32"	#12 FH

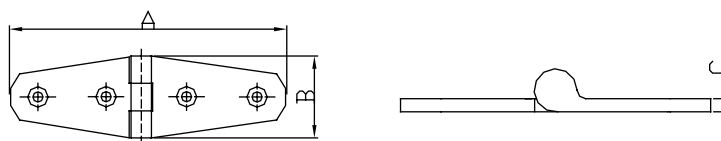


Strap Hinge



- Sold by Pair
- 316 Stainless Steel Cast

PART NO.	A	B	C	FASTENER
6120S	4-1/16"	1-1/16"	3/16"	#12 FH
6121S	5-1/4"	1-1/16"	3/16"	#10 FH
6122S	6-1/4"	1-1/16"	3/16"	#10 FH

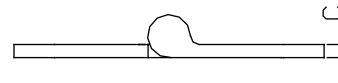
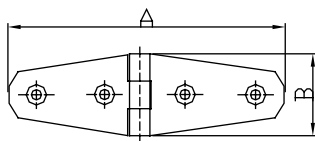


Strap Hinge



- Sold by Pair
- 304 Stainless Steel Stamped

PART NO.	A	B	C	FASTENER
7728ES	5-5/8"	1-1/2"	1/16"	#12 FH
7729ES	4"	1-3/32"	1/16"	#12 FH

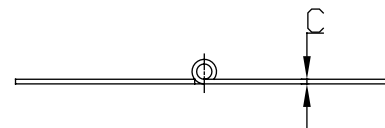
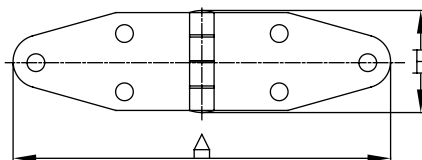


Strap Hinge



- Sold by Pair
- 304 Stainless Steel Stamped

PART NO.	A	B	C	FASTENER
7727ES	7-1/8"	1-5/8"	1/16"	#12 FH

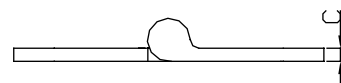
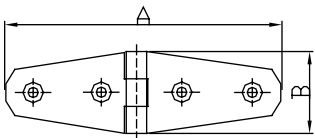


Flush Mount Strap Hinge



- Sold by Pair
- 304 Stainless Steel Stamped

PART NO.	A	B	C	FASTENER
7721ES	5-5/8"	1-1/2"	1/16"	#8

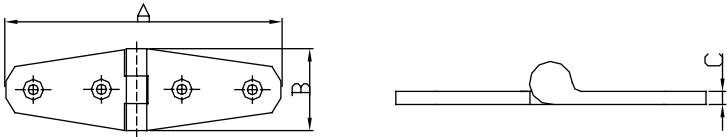


Flush Mount Strap Hinge



- Sold by Pair
- 304 Stainless Steel Stamped

PART NO.	A	B	C	FASTENER
7726ES	7-1/8"	1-5/8"	1/16"	#8
7732ES	7"	1-1/2"	1/16"	#8

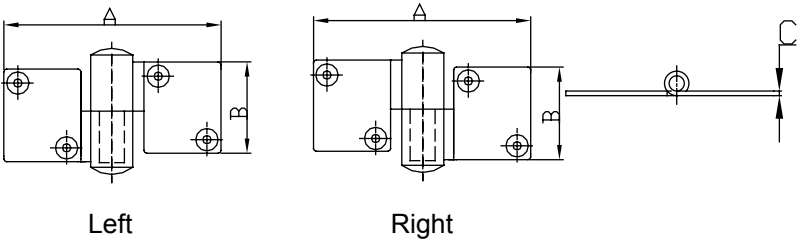


Take Apart Hinge



- Sold by Pair
- 316 Stainless Steel Cast

PART NO.	A	B	C	FASTENER	DOOR
6112S-R	3-9/16"	2"	7/32"	#10 FH pr	Right
6112S-L	3-9/16"	2"	7/32"	#10 FH pr	Left

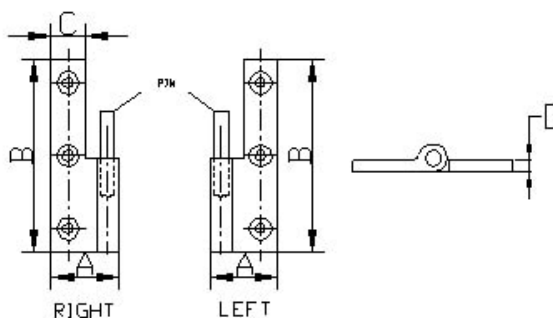


Brass Take Apart Hinge

- Sold by Pair
- Brass Cast



PART NO.	A	B	C	D	FASTENER	DOOR
2030HB-R	1"	1-1/2"	1/2"	1/16"	#5 FH	Right
2030HB-L	1"	1-1/2"	1/2"	1/16"	#5 FH	Left
2032HB-R	1"	2"	1/2"	1/16"	#6 FH	Right
2032HB-L	1"	2"	1/2"	1/16"	#6 FH	Left
2034HB-R	1"	2-1/8"	1/2"	1/16"	#8 FH	Right
2034HB-L	1"	2-1/8"	1/2"	1/16"	#8 FH	Left

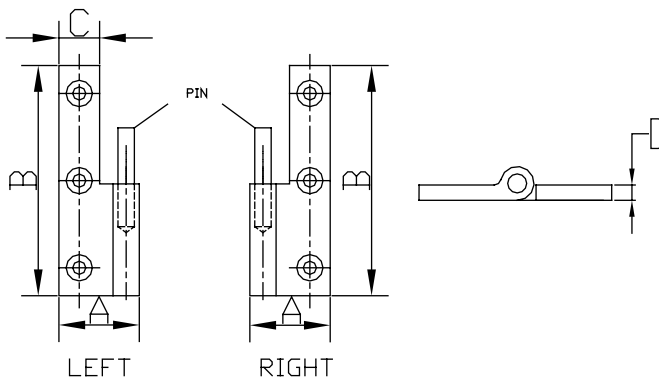


Take Apart Hinge

- Sold by Pair
- 316 Stainless Steel Cast
- Teflon Washers



PART NO.	A	B	C	D	FASTENER	DOOR
2030HS-L	1"	1-1/2"	1/2"	3/32"	#8 FH	Left
2030HS-R	1"	1-1/2"	1/2"	3/32"	#8 FH	Right
2034HS-L	1"	2-3/4"	1/2"	3/32"	#8 FH	Left
2034HS-R	1"	2-3/4"	1/2"	3/32"	#8 FH	Right

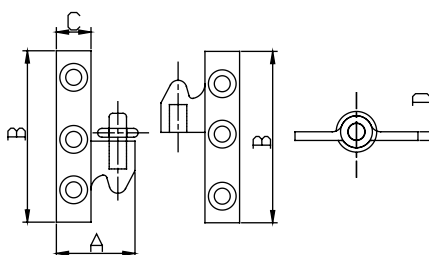


Brass Take Apart Knuckle Hinge

- Sold by Pair
- Brass Cast



PART NO.	A	B	C	D	FASTENER	DOOR
2030KB-R	1-1/4"	2-13/16"	9/16"	1/8"	#5 FH	Right
2030KB-L	1-1/4"	2-13/16"	9/16"	1/8"	#5 FH	Left
2032KB-R	1-5/32"	2"	7/8"	1/8"	#6 FH	Right
2032KB-L	1-5/32"	2"	7/8"	1/8"	#6 FH	Left
2034KB-R	1-1/8"	1-5/8"	3/8"	1/8"	#6 FH	Right
2034KB-L	1-1/8"	1-5/8"	3/8"	1/8"	#6 FH	Left

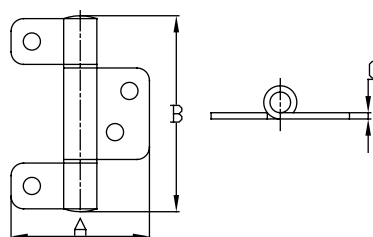


Bi-Fold Door Hinge

- Sold by Pair
- 304 Stainless Steel Stamped



PART NO.	A	B	C	FASTENER
07435ES	3-7/16"	2"	1/16"	1/4" FH

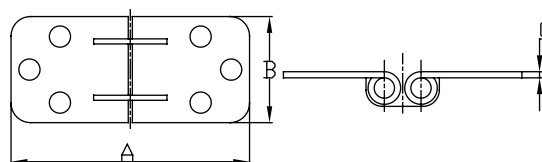


Flush Mount Double Pin Hinge

- Sold by Pair
- 304 Stainless Steel Stamped



PART NO.	A	B	C	FASTENER
7712ES	2-13/16"	1-9/16"	1/16"	#12 FH

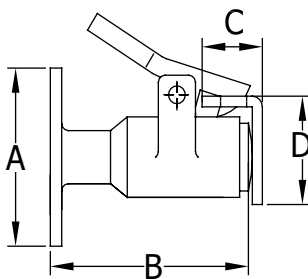


Cushioned Door Holder



- Sold by Each
- 316 Stainless Steel Cast
- Fastener #6 FH

PART NO.	A	B	C	D
2400SS	2"	2-1/2"	1-7/8"	7/8"

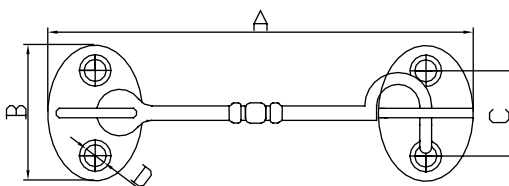


Brass Door Hook



- Sold by Each
- Brass Cast
- Fastener #6 FH

PART NO.	A	B	C	D
2088B	2-1/4"	1-1/8"	3/4"	#6

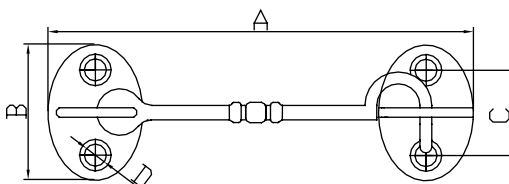


Chrome-Plated Brass Door Hook



- Sold by Each
- Chrome-Plated Brass Cast
- Fastener #6 FH

PART NO.	A	B	C	D
8124BC	2-1/4"	1-1/8"	3/4"	#6

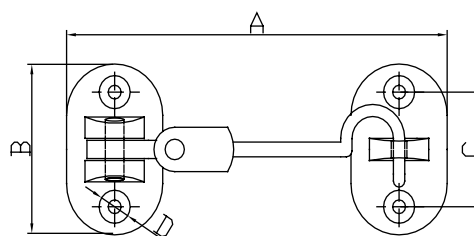


Gooseneck Cabin Door Hook



- Sold by Each
- 316 Stainless Steel Cast
- Fastener #6 FH

PART NO.	A	B	C	D
2600S	4"	1-5/8"	1"	#8

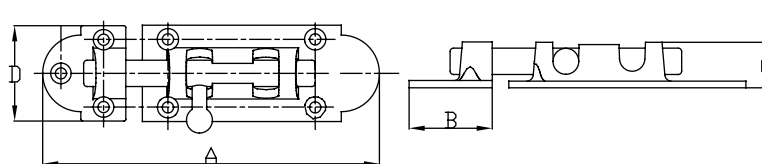


Cast Heavy Duty Barrel Bolt



- Sold by Each
- 316 Stainless Steel Cast
- Contains plastic backing for a rattle free, smooth operation

PART NO.	BOLT	A	B	C	D	FASTENER
6598S	3"	3-5/8"	1-3/8"	5/8"	1-1/2"	#8 FH
6599S	4"	4-1/4"	1-3/8"	5/8"	1-1/2"	#10 FH

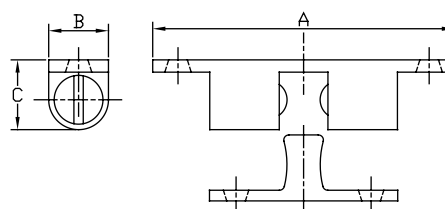


Brass Cabinet Catch



- Sold by Each
- Brass Cast
- 304 Stainless Steel Ball Spring
- Fastener #8 FH

PART NO.	A	B	C
2100B	2-1/4"	7/16"	1/2"

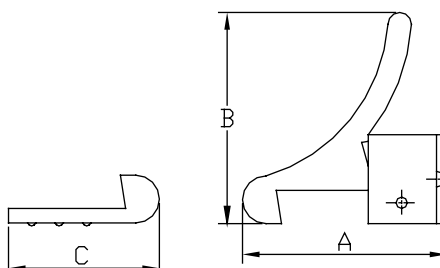


Brass Elbow Catch



- Sold by Each
- Brass Cast
- Fastener #6 FH

PART NO.	A	B	C
2072B	1-3/16"	1-1/8"	3/4"

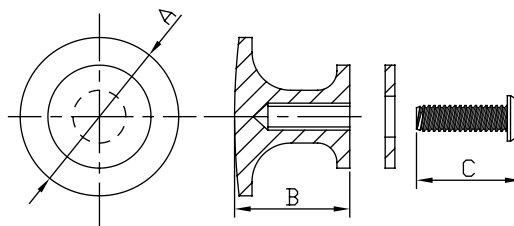


Drawer Knob



- Sold by Each
- 304 Stainless Steel Stamped
- Fastener #10 FH

PART NO.	A	B	C
7100-01-DK	7/8"	5/8"	1"

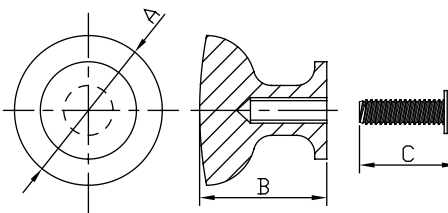


Drawer Knob



- Sold by Each
- Brass Cast

PART NO.	A	B	C
4022B	1"	13/16"	1-1/16"

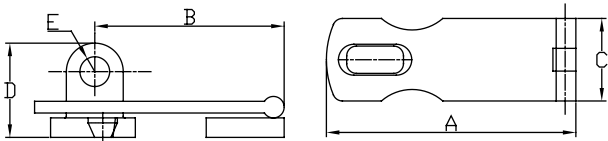


Swivel Hasp



- Sold by Each
- 316 Stainless Steel Cast
- Fastener #10 FH

PART NO.	A	B	C	D	E
6500S	3"	2-1/4"	1"	1-1/8"	3/8"

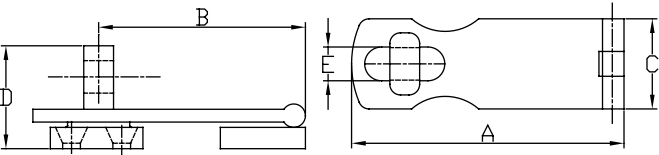


Swivel Hasp



- Sold by Each
- 304 Stainless Steel Stamped

PART NO.	A	B	C	D	E	FASTENER
7750S	2-3/4"	1-7/8"	1"	7/8"	5/16"	#10 FH
7751S	3-3/4"	3"	1"	7/8"	5/16"	#8 FH

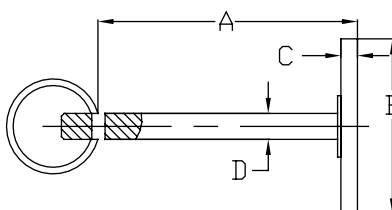


Hatch Cover Pull



- Sold by Each
- 304 Stainless Steel Stamped
- Fastener #6 FH

PART NO.	A	B	C	D
01232SPE	1-15/16"	1-1/4"	1/8"	3/16"

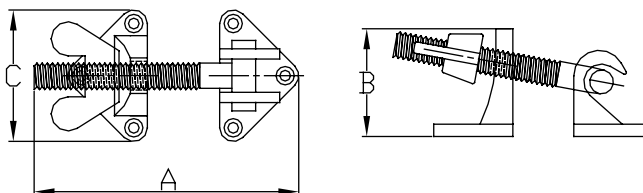


T-Bar Fastener

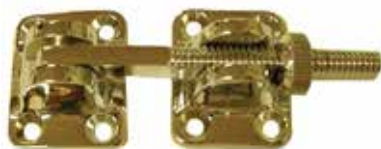


- Sold by Each
- Brass Cast
- Chrome-Plated Brass Cast
- Fastener #6 FH

PART NO.	MATERIAL	A	B	C
2062B	Brass	4"	1-1/4"	1-7/16"
2062BC	Chrome-Plated Brass	4"	1-1/4"	1-7/16"

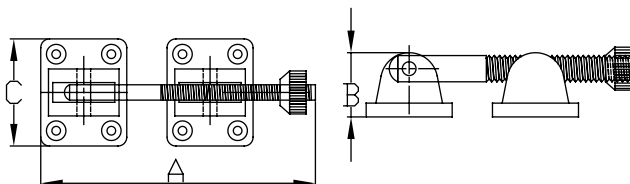


Knob Hatch Fastener



- Sold by Each
- Brass Cast
- Chrome-Plated Brass Cast
- Fastener #6 FH

PART NO.	MATERIAL	A	B	C
2064B	Brass	4"	7/8"	1-1/4"
2064BC	Chrome-Plated Brass	4"	7/8"	1-1/4"

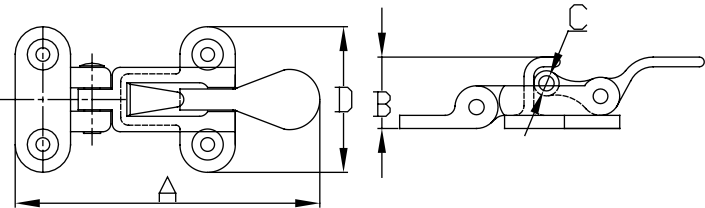


Anti-Rattle Fastener



- Sold by Each
- 316 Stainless Steel Cast
- Fastener #10 FH

PART NO.	A	B	C	D
2066SS	3-15/16"	1-1/8"	3/8"	1-3/4"

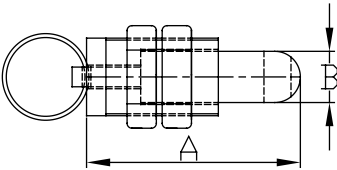


Hatch Lock Fastener

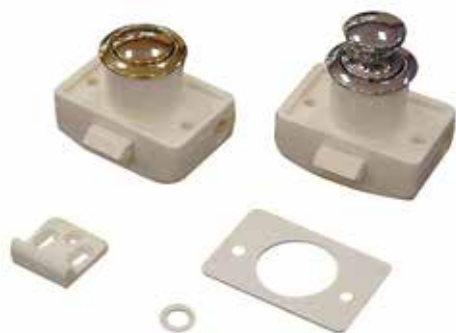


- Sold by Each
- Chrome-Plated Brass Cast
- 316 Stainless Steel Cast
- Fastener #10 FH

PART NO.	MATERIAL	A	B
8088BC	Chrome-Plated Brass	2-1/4"	3/4"
8088SS	Stainless	2-1/4"	3/4"



Push Button Cabinet Latch

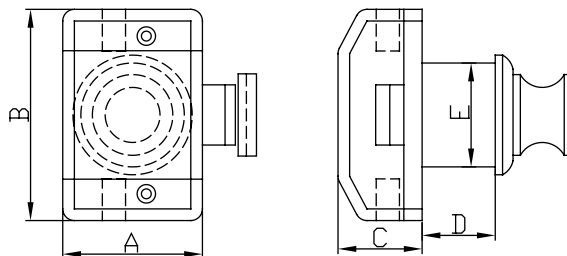


- Sold by Each
- Silver: Chrome-Plated Stainless Steel
- Gold: Titanium-Plated Stainless Steel
- Standard Door Thickness is 3/4" but can accommodate up to 1"
- Fastener #10 FH

Recommendations:

- For 1/2" door thickness, use 4 plates (7100-08)
- For 5/8" door thickness, use 2 plates (7100-08)
- For 3/4" door thickness, don't use any spare pieces
- For 7/8" door thickness, use 2 rings (7100-07)
- For 1" door thickness, use 4 rings (7100-07)

PART NO.	KNOB COLOR	A	B	C	D	E	MAX DOOR THICKNESS
7100S	Silver	1-1/2"	2-1/4"	7/8"	3/4"	1-1/8"	1"
7100G	Gold	1-1/2"	2-1/4"	7/8"	3/4"	1-1/8"	1"
7100-07	Plastic Ring, Thickness 0.021"						
7100-08	Plastic Plate, Thickness 0.033"						

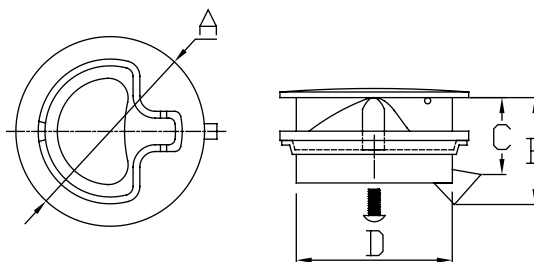


Slam Latch

- Sold by Each
- 316 Stainless Steel Cast
- Fastener #12 FH



PART NO.	LOCKING	A	B	C	D	MAX DOOR THICKNESS
7118S	NO	1-3/4"	1-5/16"	1"	1-7/8"	3/4"
7119SLK	YES	1-3/4"	1-5/16"	1"	1-7/8"	3/4"
7112S	NO	2-3/8"	1-19/32"	1-3/32"	2-11/32"	7/8"
7113SLK	YES	2-3/8"	1-19/32"	1-3/32"	2-11/32"	7/8"

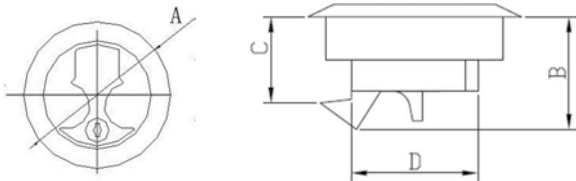


Slam Latch T-Handle



- Sold by Each
- 316 Stainless Steel Cast
- Fastener #12 FH

PART NO.	LOCKING	A	B	C	D
7120S	No	2-3/8"	1-1/2"	1"	2"
7121S	Yes	2-3/8"	1-1/2"	1"	2"

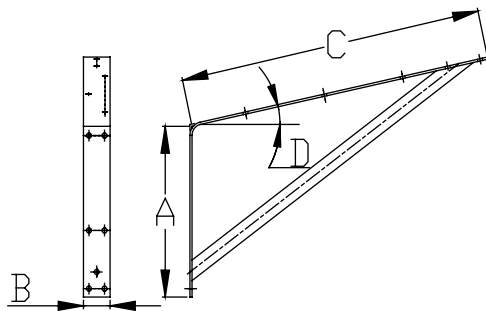


Swim Platform Mounting Bracket



- Sold by Each
- 304 Stainless Steel Stamped
- Fastener 1/4" FH

PART NO.	A	B	C	TUBE	D
7990S	6"	1-1/2"	12"	7/8"	12°
7991S	6"	1-1/2"	12"	7/8"	16°
7992S	9"	1-1/2"	17"	7/8"	12°

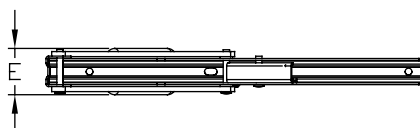
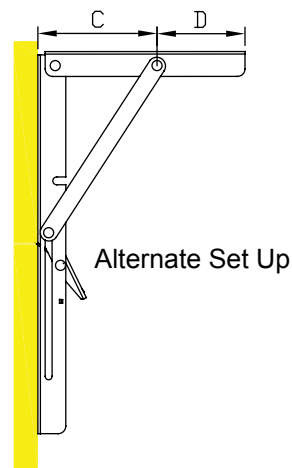
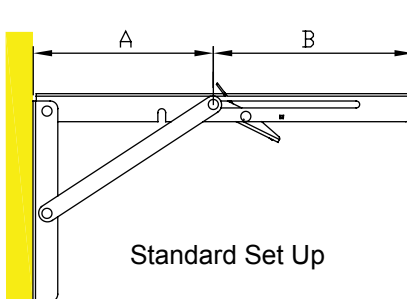


Folding Bracket

- Sold by Each
- 304 Stainless Steel Stamped
- Fastener #10 FH
- Ideal for Chair Arms and Tables



PART NO.	A	B	C	D	E
7995S	5-1/2"	6-1/4"	3-1/2"	2-3/4"	1"

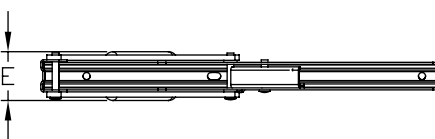
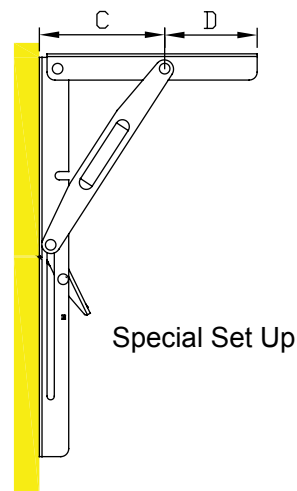
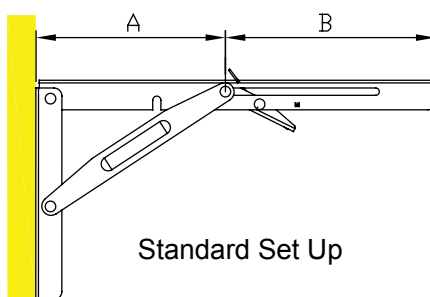


Heavy Duty Folding Bracket

- Sold by Each
- 304 Stainless Steel Stamped
- Fastener #10 FH
- Ideal for Jump-seats and Fold-out Tables
- Supporting Arms Are Stronger Than 7995S



PART NO.	A	B	C	D	E
7996S	5-1/2"	6-1/4"	3-1/2"	2-3/4"	1"

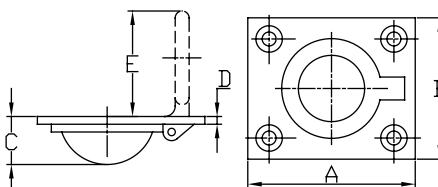


Square Ring Pull



- Sold by Each
- 316 Stainless Steel Cast
- Fastener #6 FH

PART NO.	A	B	C	D	E
6090S	1-7/8"	1-1/2"	1/2"	3/16"	1"

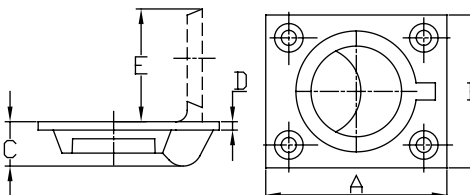


Recessed Ring Pull



- Sold by Each
- 304 Stainless Steel Stamped
- Fastener #6 FH

PART NO.	A	B	C	D	E
6090S-N	2-7/16"	1-3/4"	11/32"	1/8"	1-1/2"

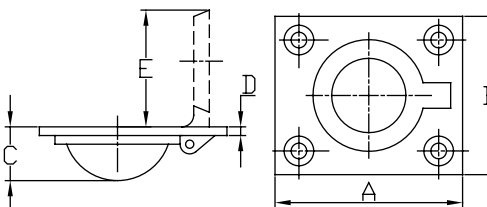


Brass Ring Pull



- Sold by Each
- Brass Cast
- Fastener #6 FH

PART NO.	A	B	C	D	E
2058B	1-3/4"	1-1/2"	1/2"	1/16"	1"
2060B	2-9/16"	2"	1/2"	1/16"	1-1/2"

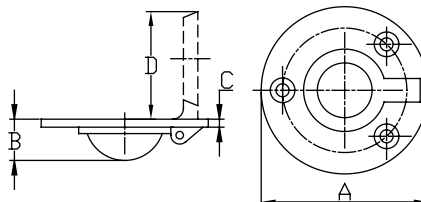


Round Ring Pull



- Sold by Each
- 316 Stainless Steel Cast
- Fastener #8 FH

PART NO.	A	B	C	D
6092S	2"	1/2"	1/8"	1"

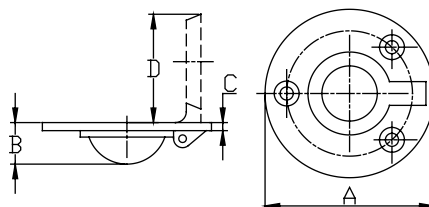


Brass Ring Pull Round



- Sold by Each
- Brass Cast

PART NO.	A	B	C	D
2054B	2-1/8"	7/16"	1/8"	1"

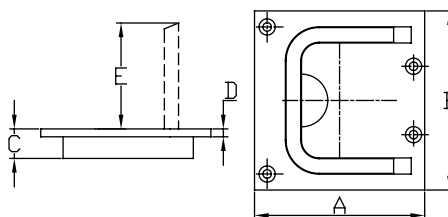


Lift Handle



- Sold by Each
- 316 Stainless Steel Cast
- Fastener #8 FH

PART NO.	A	B	C	D	E
6094S	2-1/4"	3"	3/8"	1/8"	1-1/16"

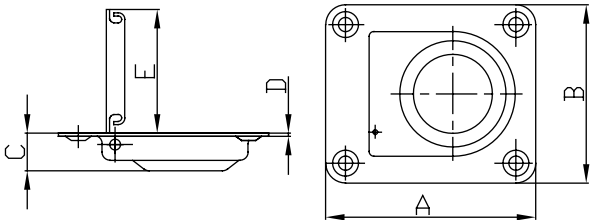


Spring Loaded Ring Pull



- Sold by Each
- 304 Stainless Steel Stamped

PART NO.	A	B	C	D	E
7740S	2-9/16"	2-3/16"	7/16"	1/32"	1-1/2"
7742S	1-3/4"	1-1/2"	7/16"	1/32"	1"

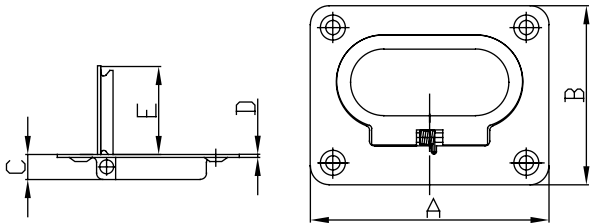


Spring Loaded Flush Lift Handle



- Sold by Each
- 304 Stainless Steel Stamped

PART NO.	A	B	C	D	E
7743S	3"	2-3/16"	5/16"	1/32"	1-1/8"

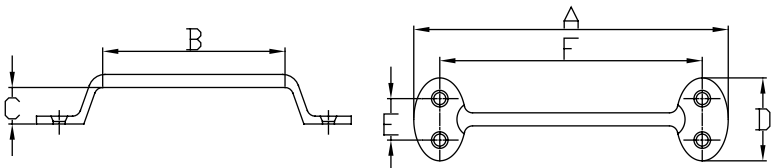


Grab Handle



- Sold by Each
- 316 Stainless Steel Cast
- Fastener #12 FH

PART NO.	A	B	C	D	E	F
6539S	5-21/32"	2-7/8"	1-1/2"	1-21/32"	7/8"	4-13/16"

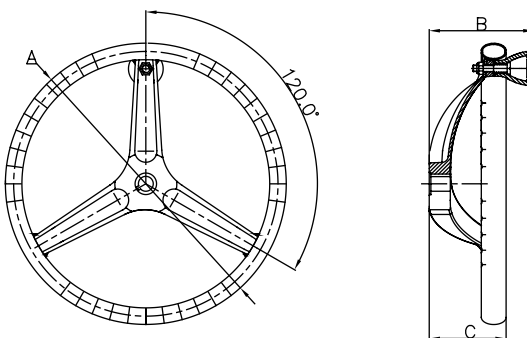


Premium Sport Wheel



- Sold by Each
- 316 Stainless Steel Cast Hub
- 304 Stainless Steel Tubing
- Fits 3/4" Tapered Shaft
- Wheel features finger grips and a control knob for easy maneuvering

PART NO.	A	B	C	REMARK
7319SRK	13-1/2"	5"	3-1/2"	Wheel without nut
7320SRK	15-1/2"	5"	3-1/2"	Wheel without nut
7327NT	5/8-18 Wheel Nut for Teleflex Hydraulic Steering System			
7328NT	1/2-20 Wheel Nut for Teleflex Mechanical Steering System			
7329NT	M12 Wheel Nut (M12*1.75)			

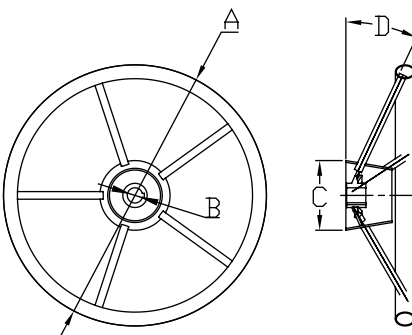


Heavy Duty Destroyer Wheel



- Sold by Each
- 316 Stainless Steel Cast Hub
- 304 Stainless Steel Tubing
- Fits 3/4" Tapered Shaft

PART NO.	A	B	C	D
7308	11"	3/4"	3-1/2"	25°
7403PC	13-1/2"	3/4"	3-1/2"	25°
7402PC	15-1/2"	3/4"	3-1/2"	25°
7402PC10	15-1/2"	3/4"	3-1/2"	10°
7401PC	18"	3/4"	3-1/2"	10°
7405PC	20"	3/4"	3-1/2"	10°
7400PC	22"	3/4"	3-1/2"	10°

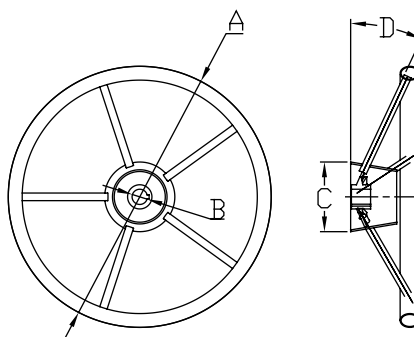


Destroyer Wheel with Foam Cover



- Sold by Each
- 316 Stainless Steel Cast Hub
- 304 Stainless Steel Tubing
- Fits 3/4" Tapered Shaft

PART NO.	A	B	C	D	COLOR
7402BFC	15-1/2"	3/4"	2-13/16"	25°	Black
7403BFC	13-1/2"	3/4"	3-1/2"	25°	Black
7408BFC	11"	3/4"	3-1/2"	25°	Black

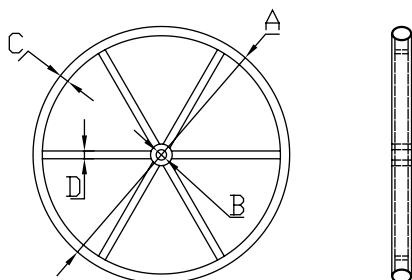


Sailboat Wheel



- Sold by Each
- 316 Stainless Steel Cast Hub
- 304 Stainless Steel Tubing
- Fits 1" Straight Shaft
- 1/4" Keyway

PART NO.	A	B	C	D
7549	22"	1"	7/8"	1/2"-6
7500	24"	1"	7/8"	1/2"-6
7501	26"	1"	7/8"	1/2"-6
7502	28"	1"	7/8"	1/2"-6
7503	30"	1"	7/8"	1/2"-6
7504	32"	1"	7/8"	1/2"-6
7505	34"	1"	7/8"	1/2"-6
7506	36"	1"	7/8"	1/2"-6
7507	38"	1"	1"	1/2"-6
7508	40"	1"	1"	1/2"-6
7509	42"	1"	1"	1/2"-6



Steering Wheel Cap



- Sold by Each
- PVC Plastic
- Teak Wood

PART NO.	DESCRIPTION
7406-PC	PVC Spring Cap
7406-SPC	PVC Spring Cap w/ SS Cover
7406-SPE	Teak Cover Cap

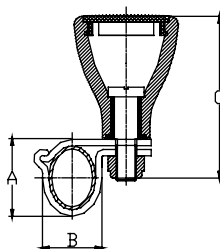


Round Wheel Control Knob



- Sold by Each
- 316 Stainless Steel Cast
- Nylon Cap

PART NO.	A	B	C
7300SCK	15/16"	3/4"	2-1/2"

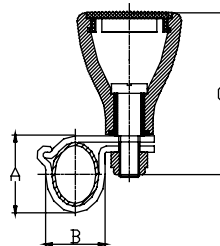


Mushroom Wheel Control Knob



- Sold by Each
- 316 Stainless Steel Cast

PART NO.	A	B	C
7301SCK	15/16"	3/4"	2-1/2"

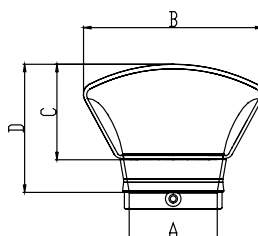


Low Profile Cowl Vent



- Sold by Each
- 316 Stainless Steel Cast

PART NO.	A	B	C	D	COLOR
1450SK-W	3"	5-3/4"	3-3/64"	3"	White
1450SK-R	3"	5-3/4"	3-3/64"	3"	Red
1460SK-W	4"	7-13/16"	3-55/64"	5-3/8"	White
1460SK-R	4"	7-13/16"	3-55/64"	5-3/8"	Red

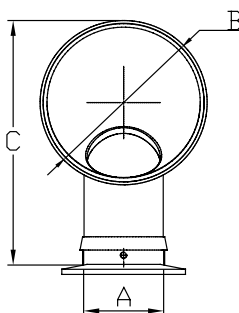


Round Cowl Vent



- Sold by Each
- 304 Stainless Steel Stamped

PART NO.	A	B	C	COLOR
1350SK-W	3"	6-1/4"	9-3/8"	White
1350SK-R	3"	6-1/4"	9-3/8"	Red
1360SK-W	4"	8-1/2"	11-1/2"	White
1360SK-R	4"	8-1/2"	11-1/2"	Red

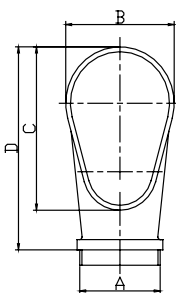


Teardrop Cast Cowl Vent



- Sold by Each
- 316 Stainless Steel Cast

PART NO.	A	B	C	D	COLOR
6306SK-W	4"	5-5/8"	8"	9-7/8"	White

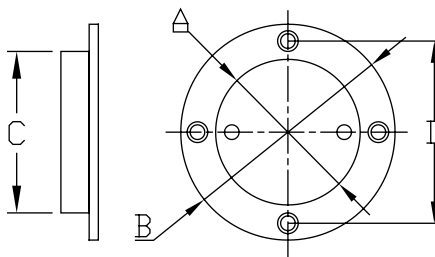


Standard Deck Plate



- Sold by Each
- 316 Stainless Steel Cast

PART NO.	A	B	C	D	FASTENER
6361S	3"	4-5/8"	3-5/16"	3-7/8"	1/4" FH
6362S	4"	5-1/2"	4-3/8"	4-13/16"	#12 FH

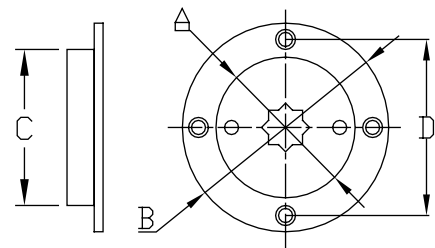


Deck Plate with Star Pattern



- Sold by Each
- 316 Stainless Steel Cast

PART NO.	A	B	C	D	FASTENER
6361SD	3"	4-5/8"	3-5/16"	3-7/8"	#10 FH
6362SD	4"	6"	4-3/8"	5-1/4"	#12 FH

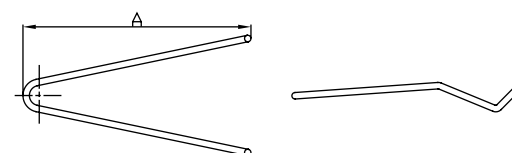


Wire Key



- Sold by Each
- 304 Stainless Steel Rod
- Wire Key for 3" and 4" Deck Plates

PART NO.	A
1350KY	7"

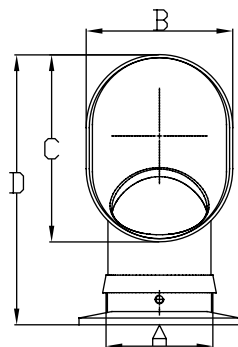


Oval Cowl Vent



- Sold by Each
- Bronze Cast
- Red Powder Coat Interior

PART NO.	A	B	C	D
1303B	3"	3-3/4"	5-3/4"	9"
1300B	4"	4-1/2"	6-1/2"	9-3/4"

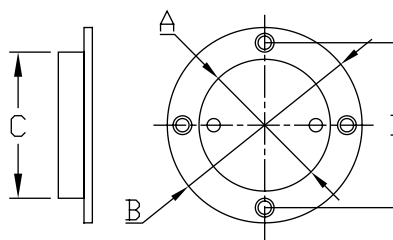


Deck Plate



- Sold by Each
- Bronze Cast
- Fastener #10 FH

PART NO.	A	B	C	D
1380B	3"	4-5/8"	3-5/16"	3-7/8"
1382B	4"	6"	4-3/8"	5-1/4"

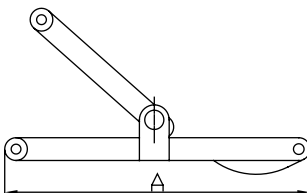


Bronze Cast Deck Plate Key



- Sold by Each
- Bronze Cast
- Key for 3" and 4" Deck Plates

PART NO.	A
1393B	6"

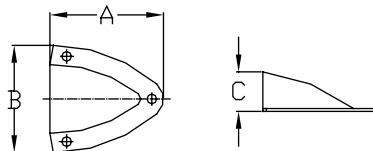


Midget Vent



- Sold by Each
- 304 Stainless Steel Stamped
- Fastener #6 RH

PART NO.	A	B	C
6564S	1-5/8"	1-3/4"	1/2"
6566S	2-1/4"	2-1/8"	5/8"

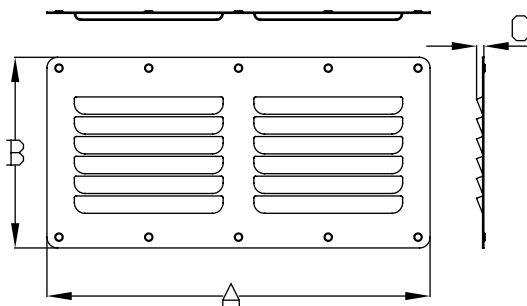


SS 304 Stamped Louvered Vent



- Sold by Each
- 304 Stainless Steel Stamped

PART NO.	A	B	C	FASTENER
7721S	5"	2-1/2"	3/16"	#6 RH
7722S	5"	4-1/2"	3/16"	#6 RH
7723S	9"	4-1/2"	3/16"	#8 RH
7723SV	5"	9"	3/16"	#6 RH

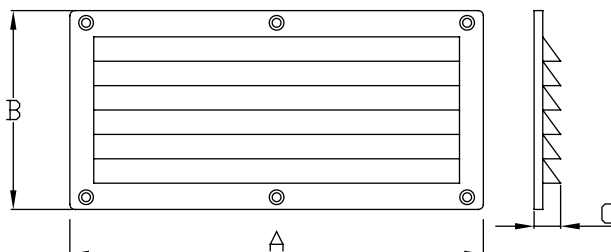


Louvered Vent



- Sold by Each
- ABS Plastic

PART NO.	A	B	C	FASTENER
58824B	5-1/2"	4-7/8"	5/8"	#10 RH
58825B	10-1/4"	4-7/8"	5/8"	#12 RH

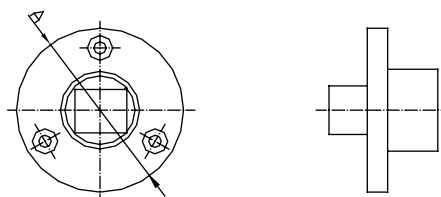


Garboard Plug



- Sold by Each
- Brass Cast
- 316 Stainless Steel Cast
- 1/2" NPT Tapered

PART NO.	MATERIAL	A
8074B	Brass	2"
8074BP	Replacement plug	
8074S	316 SS	2"
8074SP	Replacement plug	

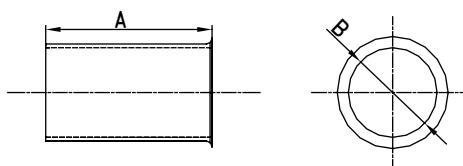


Drain Tube



- Sold by Each
- Brass Cast

PART NO.	A	B
54183	1-7/8"	1"
54184	3"	1"
54182	3"	1-1/4"

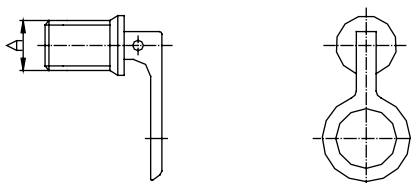


Flip-Lock Drain Plug



- Sold by Each
- 304 Stainless Steel Stamped
- Brass Stamped

PART NO.	MATERIAL	A
54191S	SS 304	1"
54192S	SS 304	1-1/4"
54191	Brass	1"
54192	Brass	1-1/4"

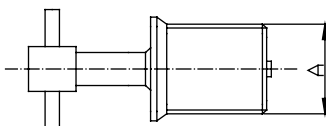


T-Handle Drain Plug



- Sold by Each
- 304 Stainless Steel Stamped
- Brass Stamped

PART NO.	MATERIAL	A
54193S	SS 304	1"
54194S	SS 304	1-1/4"
54193	Brass	1"
54194	Brass	1-1/4"

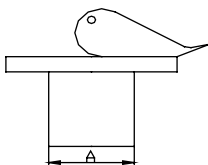


Bait Well Plug



- Sold by Each
- Brass Stamped

PART NO.	A
54195	3/4"
54196	5/8"
54197	1/2"
54198	3/8"
54199	7/8"

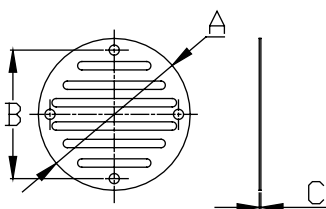


Drain Cover



- Sold by Each
- 304 Stainless Steel Stamped
- Fastener #8 RH

PART NO.	A	B	C
7728S	3-1/4"	2-3/4"	1/32"

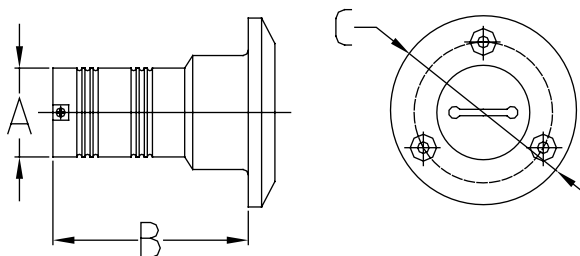


Deck Fill



- Sold by Each
- 316 Stainless Steel Cast
- Includes Key

PART NO.	A	B	C	MARKING	FASTENER
6002S	1-1/2" Hose	3"	3"	WASTE	#12 FH ea
6004S	1-1/2" Hose	3"	3"	DIESEL	#12 FH ea
6005S	1-1/2" Hose	3"	3"	GAS	#12 FH ea
6006S	1-1/2" Hose	3"	3"	WATER	#12 FH ea
6007S	2" Hose	3-3/16"	3-1/2"	GAS	#10 FH ea
6008S	2" Hose	3-3/16"	3-1/2"	DIESEL	#12 FH ea

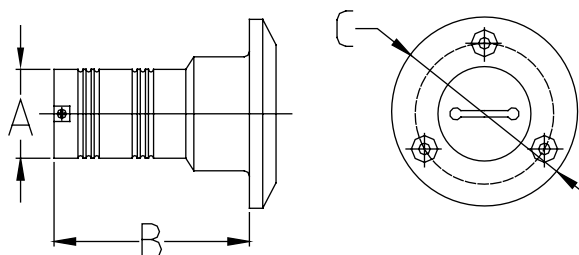


Deck Fill with Colored Text



- Sold by Each
- 316 Stainless Steel Cast
- Fastener #10 FH
- Includes Key
- Colored Text with Internationally Recognized Symbols

PART NO.	A	B	C	MARKING
6002SEU	1-1/2" Hose	3"	3"	WASTE, with black symbol
6004SEU	1-1/2" Hose	3"	3"	DIESEL, with green symbol
6005SEU	1-1/2" Hose	3"	3"	GAS, with red symbol
6006SEU	1-1/2" Hose	3"	3"	WATER, with blue symbol
6007SEU	2" Hose	3-3/16"	3-1/2"	GAS, with red symbol
6008SEU	2" Hose	3-3/16"	3-1/2"	DIESEL, with green symbol

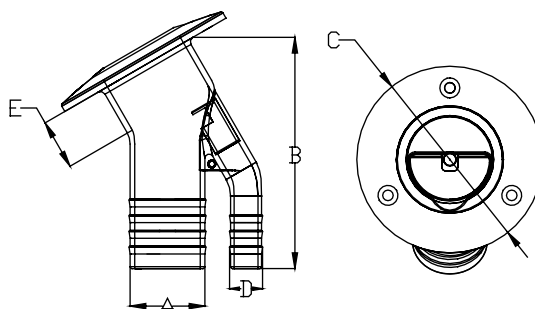


Vented Angled Deck Fill



- Sold by Each
- 316 Stainless Steel Cast
- Fastener 1/4" FH

PART NO.	A	B	C	D	E	MARKING
6005SEU-FTVT	1-1/2" Hose	4-9/16"	3-3/4"	5/8"	1"	GAS
6007SEU-FTVT	2" Hose	4-9/16"	4-1/2"	5/8"	1"	GAS

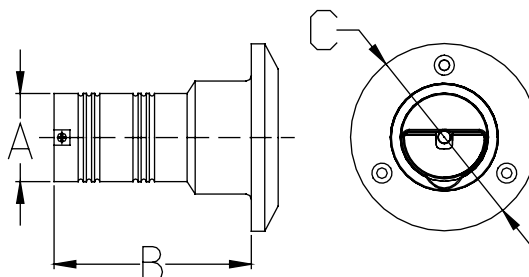


Flip Tab Deck Fill



- Sold by Each
- 316 Stainless Steel Cast
- Fastener #12 FH

PART NO.	A	B	C	MARKING
6002SEU-FT	1-1/2" Hose	3"	3"	WASTE
6004SEU-FT	1-1/2" Hose	3"	3"	DIESEL
6005SEU-FT	1-1/2" Hose	3"	3"	GAS
6006SEU-FT	1-1/2" Hose	3"	3"	WATER
6007SEU-FT	2" Hose	3-3/16"	3-1/2"	GAS
6008SEU-FT	2" Hose	3-3/16"	3-1/2"	DIESEL

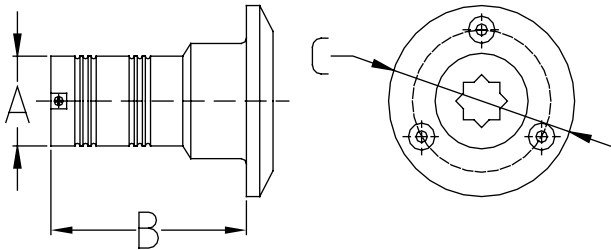


Deck Fill for Sailboats



- Sold by Each
- 316 Stainless Steel Cast
- Fastener #12 FH
- Includes Key
- Caps Fit a Sailboat Winch Handle

PART NO.	A	B	C	MARKING
6002SAIL	1-1/2" Hose	3"	3"	WASTE
6004SAIL	1-1/2" Hose	3"	3"	DIESEL
6006SAIL	1-1/2" Hose	3"	3"	WATER
6009SAIL	Replacement cap for sail boat deck fill			
—Cap thread: 1-1/4" 12 NPS				



Replacement Parts



- Sold by Each
- 316 Stainless Steel Cast

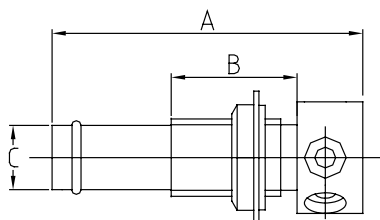
PART NO.	DESCRPITION	DECK FILL CAP SIZE	THREAD
6009SAIL	Winch Cap	1-1/2" 1-1/4"	11-1/2 NPS
6009S	Slot Cap	1-1/2" 1-1/4"	11-1/2 NPS
6009SPE	Slot Cap	2" 1-1/2"	11-1/2 NPS
6009SK	Standard Slot Key		

Straight Fuel Vent



- Sold by Each
- 316 Stainless Steel Cast

PART NO.	A	B	C
6600S	2-7/8"	1"	5/8" Hose

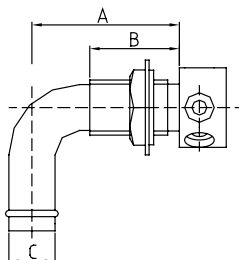


90° Fuel Vent



- Sold by Each
- 316 Stainless Steel Cast

PART NO.	A	B	C	VENT DIREC.
6601S	2-1/2"	1-1/8"	5/8" Hose	Up
6602S	2-1/2"	1-1/8"	5/8" Hose	Down
6603S	3-3/4"	3"	1" Hose	Down

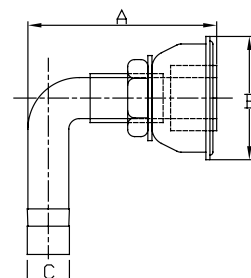


Flush Mount 90° Fuel Vent



- Sold by Each
- 316 Stainless Steel Cast

PART NO.	A	B	C	VENT DIREC.
6601SCAP	2-1/2"	1-1/8"	5/8" Hose	Up
6602SCAP	2-1/2"	1-1/8"	5/8" Hose	Down
6603SCAP	3-3/4"	3"	1" Hose	Down

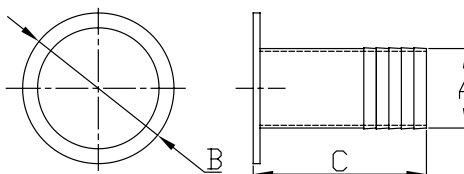


Exhaust with Cover



- Sold by Each
- 316L Stainless Steel Cast
- Silicone Cover
- Fastener 1/4" FH

PART NO.	A	B	C
7580CSE	3-1/2"	5-7/16"	3-7/8"
7581CSE	5"	7-3/4"	5-11/16"

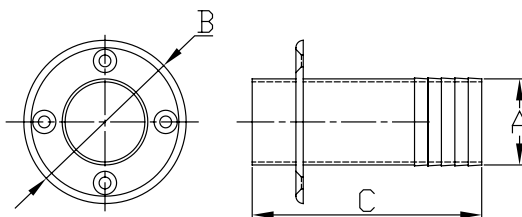


Transom Exhaust Pipe



- Sold by Each
- 304 Stainless Steel Stamped
- Fastener 1/4" FH

PART NO.	A	B	C
7570S	1-1/2"	3-1/4"	4-9/16"
7571S-TWC	1-7/8"	3-5/8"	5-9/16"
7573S-TWC	2-1/2"	4-1/8"	5-9/16"
7574S	3"	4-3/4"	4-15/16"

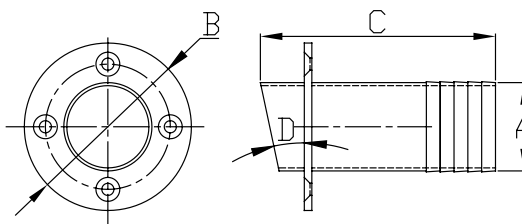


Angled Exhaust Pipe



- Sold by Each
- 316 Stainless Steel Cast
- Fastener #12 FH

PART NO.	A	B	C	D
7575S-A12	3-1/2"	6-1/2"	6-1/4"	12Deg
7576S-A16	4"	7-7/16"	7"	16Deg

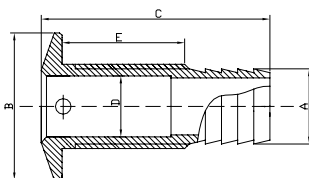


Thru-Hull

- Sold by Each
- 316 Stainless Steel Cast



PART NO.	A	B	C	D	E	THREAD
6650S-L	5/8"	1-1/4"	3"	3/4"	1-5/8"	1/2-14NPS
6651S-L	3/4"	1-3/4"	3-3/4"	1"	2-1/8"	3/4-14NPS
6652S-L	1"	1-3/4"	4"	1-1/8"	2-1/4"	1-11.5NPS
6653S-L	1-1/8"	1-7/8"	4"	1-3/16"	2-3/8"	1-11.5NPS
6654S-L	1-1/4"	1-7/8"	4-1/8"	1-1/2"	2-7/16"	1.25-11.5NPS
6655S-L	1-1/2"	1-1/8"	4-1/4"	1-3/4"	1-3/4"	1.5-11.5NPS

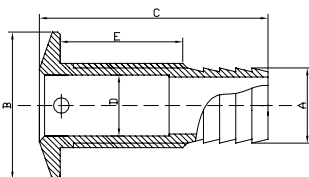


Short Thread Thru-Hull

- Sold by Each
- 316 Stainless Steel Cast



PART NO.	A	B	C	D	E	THREAD
6650S	5/8"	1-1/2"	2-1/4"	13/16"	1"	1/2-14NPS
6651S	3/4"	1-7/8"	2-1/2"	1"	1"	3/4-14NPS
6652S	1"	2-1/4"	2-1/2"	1-3/16"	1-1/16"	1-11.5NPS
6653S	1-1/8"	2-1/4"	2-1/2"	1-3/16"	1-1/8"	1-11.5NPS
6654S	1-1/4"	2-3/4"	3"	1-1/2"	1-1/4"	1.25-11.5NPS
6655S	1-1/2"	3"	3-1/8"	1-3/4"	1-3/16"	1.5-11.5NPS

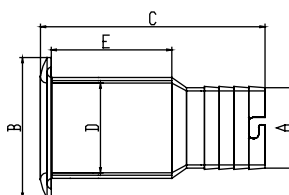


Notched Thru-Hull



- Sold by Each
- 316 Stainless Steel Cast

PART NO.	A	B	C	D	E	THREAD
6651S-L2	3/4"	1-3/4"	3-7/8"	13/16"	2"	3/4"-14NPS
6652S-L2	1"	2"	4-1/16"	1-1/16"	2-1/16"	1"-11.5 NPS
6654S-L2	1-1/4"	2-1/4"	4-1/16"	1-7/16"	2-1/8"	1-1/4"-11.5 NPS
6655S-L2	1-1/2"	2-11/16"	4-1/16"	1-11/16"	2-1/4"	1-1/2"-11.5 NPS

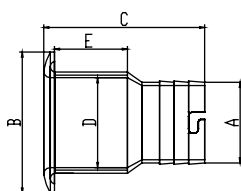


Notched Short Thread Thru-Hull



- Sold by Each
- 316 Stainless Steel Cast

PART NO.	A	B	C	D	E	THREAD
6651S2	3/4"	1-3/4"	2-13/16"	13/16"	1-1/8"	3/4"-14NPS
6652S2	1"	2"	3"	1-1/16"	1-1/4"	1"-11.5 NPS
6654S2	1-1/4"	2-1/4"	3"	1-7/16"	1-5/16"	1-1/4"-11.5 NPS
6655S2	1-1/2"	2-11/16"	3"	1-11/16"	1-3/8"	1-1/2"-11.5 NPS

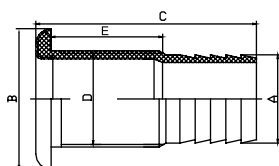


Thru-Hull



- Sold by Each
- 316 Stainless Steel Stamped Trim
- Nylon Body

PART NO.	A	B	C	D	E
6650N	5/8"	1-7/8"	3-3/16"	1-3/8"	1-1/8"
6651N	3/4"	1-7/8"	3-7/16"	1-3/8"	1-1/8"
6652N	1"	1-7/8"	3-3/8"	1-3/8"	1-1/8"
6653N	1-1/8"	1-7/8"	3-1/16"	1-3/8"	1-1/8"
6654N	1-1/4"	2-3/8"	4-1/16"	1-5/8"	1-1/4"
6655N	1-1/2"	2-3/8"	4-1/16"	1-5/8"	1-1/4"

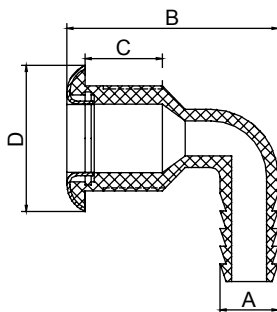


90° Thru-Hull



- Sold by Each
- 316 Stainless Steel Stamped Trim
- Nylon Body

PART NO.	A	B	C	D
6651N-90	3/4"	2-3/4"	1"	1-7/8"
6653N-90	1-1/8"	4-1/2"	1-5/8"	2-3/8"
6655N-90	1-1/2"	4-7/16"	3"	2-3/8"



Stainless Deck Hatches

- CE Approved
- 316 Stainless Steel Bent Frame
- 316 Stainless Steel Cast Hinges
- Low Profile
- UV Resistant Acrylic
- Optional Standard or Gas Arms



Low Profile

New Feature:

Friction Hinge

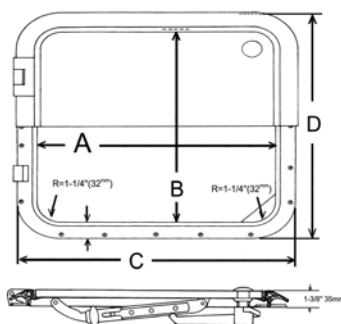
- Patented Design
- Hatch Can Be Held Open at Any Degree
- Elegant and Modern Feel
- No Gas Arms or Support Needed



Inside Opening Deck Hatch



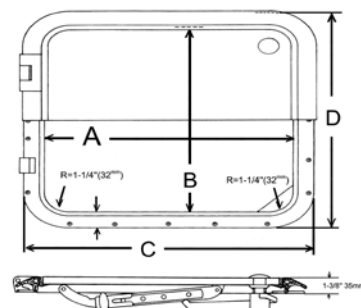
PART NO.	A	B	C	D	ACRYLIC THICKNESS
LDH-08-I	8-1/8"	13-3/4"	10-5/8"	16-1/4"	1/2"
LDH-10-I	10"	10"	12-1/2"	12-1/2"	1/2"
LDH-20-I	12-1/2"	17-1/2"	15"	20"	1/2"
LDH-30-I	14-1/2"	19-1/2"	17"	22"	1/2"
LDH-40-I	16-1/2"	16-1/2"	19"	19"	1/2"
LDH-50-I	19-1/2"	19-1/2"	22"	22"	1/2"
LDH-60-I	24"	24"	26-1/2"	26-1/2"	1/2"
LDH-70-I	31"	31"	33-1/2"	33-1/2"	1/2"



In/Outside Opening Deck Hatch



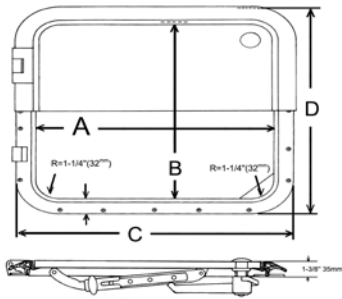
PART NO.	A	B	C	D	ACRYLIC THICKNESS
LDH-30-O	14-1/2"	19-1/2"	17"	22"	1/2"
LDH-40-O	16-1/2"	16-1/2"	19"	19"	1/2"
LDH-50-O	19-1/2"	19-1/2"	22"	22"	1/2"
LDH-60-O	24"	24"	26-1/2"	26-1/2"	1/2"
LDH-70-O	31"	31"	33-1/2"	33-1/2"	1/2"



Double Opening Deck Hatch



PART NO.	A	B	C	D	ACRYLIC THICKNESS
LDH-50-D	19-1/2"	9-1/2"	22"	22"	1/2"
LDH-60-D	24"	24"	26-1/2"	26-1/2"	1/2"
LDH-70-D	31"	31"	33-1/2"	33-1/2"	1/2"



www.whitewatermh.com



Please visit our website for more details and custom information.

Stainless Deck Hatches

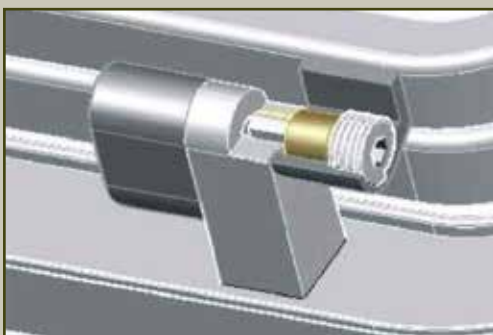
- CE Approved
- 316 Stainless Steel Bent Frame
- 316 Stainless Steel Cast Hinges
- Thermoplastic Neoprene Gasket
- Tempered Glass
- Straight or Angled Spigot



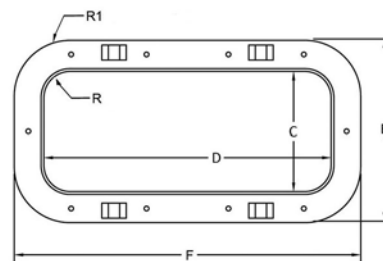
New Feature:

Friction Hinge

- Patented Design
- Portlight Can Be Opened at Any Degree
- Elegant and Modern Feel
- No Gas Arms, Chains, or Support Needed



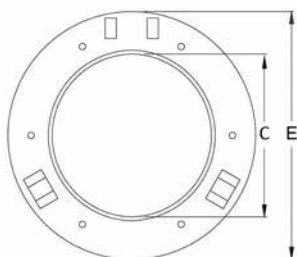
Rectangular Portlight



- Straight or Angled Spigot
- Spigot Sizes 1-1/4", 1-1/2", 2", 2-1/2", 3", 3-1/2"
- Optional Storm Cover
- Optional Stay Arms
- Fixed Versions Available

PART NO.	C	D	E	F	R	R1	GLASS THICKNESS
LS-0512	5-1/4"	12-1/8"	7-5/8"	14-1/2"	1-1/4"	2-3/8"	1/4"
LS-0714	7-1/4"	14-1/4"	9-5/8"	16-5/8"	1-1/4"	2-3/8"	1/4"
LS-0716	7-1/4"	16-1/4"	9-5/8"	18-5/8"	1-1/4"	2-3/8"	1/4"
LS-0718	7-1/4"	18-1/4"	9-5/8"	20-5/8"	1-1/4"	2-3/8"	1/4"
LS-0816	8-1/4"	16-1/4"	10-5/8"	18-5/8"	1-1/4"	2-3/8"	1/4"
LS-0818	8-1/4"	18-1/4"	10-5/8"	20-5/8"	1-1/4"	2-3/8"	1/4"
LS-1020	10-3/8"	20-3/8"	12-7/8"	22-7/8"	1-1/4"	2-3/8"	3/8"
LS-1024	10-3/8"	24-3/8"	12-7/8"	26-7/8"	1-1/4"	2-3/8"	3/8"
LS-1224	12-3/8"	24-3/8"	14-7/8"	26-7/8"	1-1/4"	2-3/8"	3/8"
LS-1228	12-3/8"	28-3/8"	14-7/8"	30-7/8"	1-1/4"	2-3/8"	3/8"

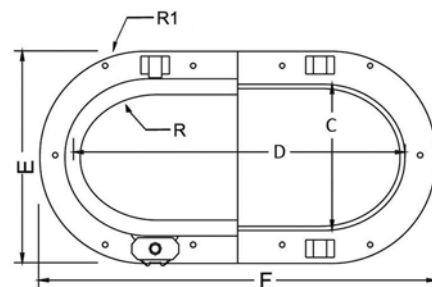
Round Portlight



- Straight Spigot Only
- Spigot Sizes 1-1/4", 1-1/2", 2", 2-1/2", 3", 3-1/2"
- Optional Storm Cover
- Optional Stay Arms
- Fixed Versions Available

PART NO.	C	E	GLASS THICKNESS
LSR-0700	7-1/4"	9-5/8"	5/16"
LSR-0800	8-1/4"	10-5/8"	5/16"
LSR-1000	10-3/8"	12-7/8"	3/8"
LSR-1200	12-3/8"	14-7/8"	3/8"
LSR-1400	14-3/8"	16-7/8"	3/8"

Oval Portlight



- Straight or Angled Spigot
- Spigot Sizes 1-1/4", 1-1/2", 2", 2-1/2", 3", 3-1/2"
- Optional Storm Cover
- Optional Stay Arms
- Fixed Versions Available

PART NO.	C	D	E	F	R	R1	GLASS THICKNESS
LSO-0512	5-1/4"	12-1/8"	7-5/8"	14-1/2"	1-1/4"	2-3/8"	5/16"
LSO-0714	7-1/4"	14-1/4"	9-5/8"	16-5/8"	1-1/4"	2-3/8"	5/16"
LSO-0716	7-1/4"	16-1/4"	9-5/8"	18-5/8"	1-1/4"	2-3/8"	5/16"
LSO-0718	7-1/4"	18-1/4"	9-5/8"	20-5/8"	1-1/4"	2-3/8"	5/16"
LSO-0816	8-1/4"	16-1/4"	10-5/8"	18-5/8"	1-1/4"	2-3/8"	5/16"
LSO-0818	8-1/4"	18-1/4"	10-5/8"	20-5/8"	1-1/4"	2-3/8"	5/16"
LSO-1020	10-3/8"	20-3/8"	12-7/8"	22-7/8"	1-1/4"	2-3/8"	3/8"
LSO-1024	10-3/8"	24-3/8"	12-7/8"	26-7/8"	1-1/4"	2-3/8"	3/8"
LSO-1224	12-3/8"	24-3/8"	14-7/8"	26-7/8"	1-1/4"	2-3/8"	3/8"
LSO-1228	12-3/8"	28-3/8"	14-7/8"	30-7/8"	1-1/4"	2-3/8"	3/8"

H-Trim Ring

- Alternative H-Trim Ring Available



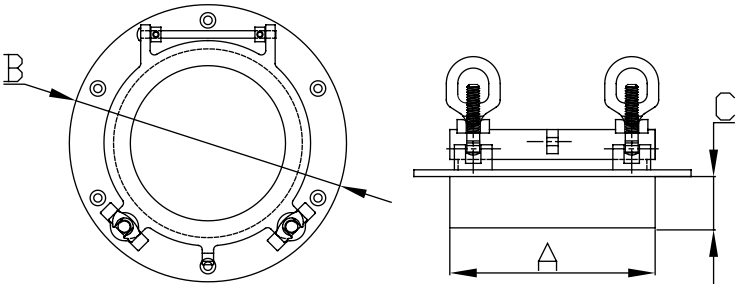
Please visit www.manshipmarine.com for more details

Bronze Round Opening Ports



- Sold by Each
- Bronze Cast
- Includes Trim Ring
- Screen Ordered Separately

PART NO.	A	B	C	GLASS THICKNESS	FASTENER
1180B	4-5/16"	7"	1-1/2"	1/4"	#8 FH
1182B	6-3/8"	9"	1-1/2"	1/4"	#8 FH
1184B	8-3/8"	11-1/4"	1-1/2"	1/4"	#12 FH
1190B	10-1/2"	13-3/4"	1-7/8"	1/4"	#12 FH
1186B	12-1/2"	15-1/4"	2-3/8"	1/4"	#12 FH

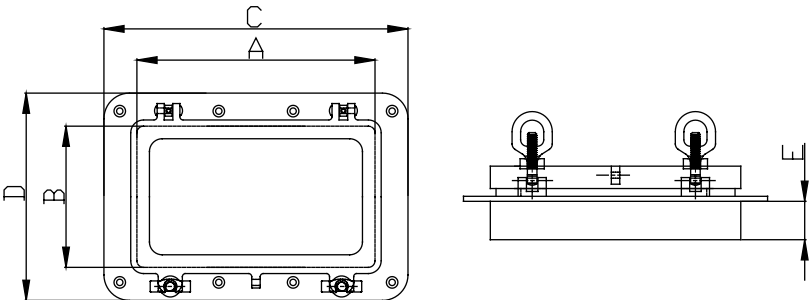


Rectangular Opening Ports



- Sold by Each
- Bronze Cast
- Includes Trim Ring
- Screen Ordered Separately

PART NO.	A	B	C	D	E	GLASS THICKNESS
1140B	12-7/16"	5-1/2"	14-1/2"	7-1/2"	1-1/2", 15° Slope	1/4"
1148B	14-5/8"	7-1/2"	17"	10"	1-1/2", 15° Slope	1/4"

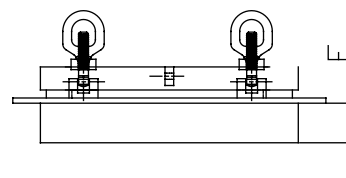
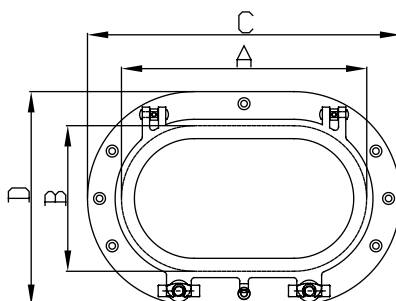


Oval Opening Ports



- Sold by Each
- Bronze Cast
- Includes Trim Ring
- Screen Ordered Separately

PART NO.	A	B	C	D	E	GLASS THICKNESS
1120B	8-1/4"	5-5/16"	10-1/4"	7-3/8"	1-1/2"	1/4"
1124B	10-5/16"	6-3/8"	12-1/2"	8-1/2"	1-1/2"	1/4"
1128B	13-3/8"	8-9/16"	16-1/2"	10-3/4"	1-1/2"	1/4"

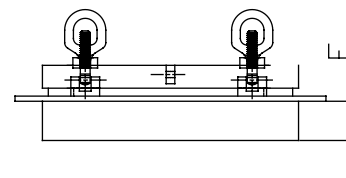
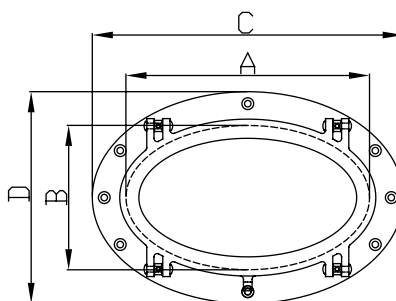


Bronze Elliptical Opening Ports



- Sold by Each
- Bronze Cast
- Includes Trim Ring
- Screen Ordered Separately

PART NO.	A	B	C	D	E	GLASS THICKNESS
1110B	12-3/16"	4-13/16"	14-3/8"	7-1/16"	1-1/2", 10° Slope	1/4"
1114B	14-1/4"	5-3/8"	16-1/2"	7-5/8"	1-1/2", 10° Slope	1/4"

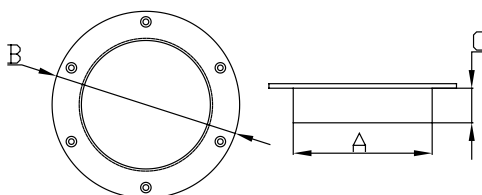


Bronze Round Fixed Ports



- Sold by Each
- Bronze Cast

PART NO.	PORTLIGHT SIZE	CUT-OUT SIZE	OVERALL DIA.	SPIGOT LENGTH	GLASS THICKNESS	FASTENER
1192B	4"	4-1/2"	5-1/2"	1/2"	1/4"	#8 FH
1194B	5"	5-5/8"	6-3/8"	3/4"	1/4"	#12 FH
1196B	6"	6-7/8"	8-1/8"	3/4"	1/4"	#12 FH
1198B	8"	9"	11"	1-1/16"	1/4"	#12 FH
1178B	10"	11-1/8"	13-3/4"	1-1/2"	1/4"	#12 FH

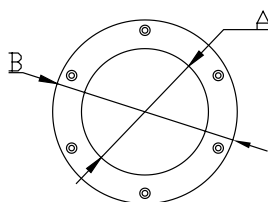


Bronze Round Trim Ring



- Sold by Each
- Bronze Cast

PART NO.	A	B	SCREW SIZE	FASTENER
1193B	4-1/2"	5-1/2"	1/4"	#8 FH
1195B	5-5/8"	6-3/8"	1/4"	#12 FH
1197B	6-7/8"	8-1/8"	1/4"	#12 FH
1199B	9"	11"	1/4"	#12 FH
1179B	11-1/8"	13-3/4"	5/8"	#12 FH

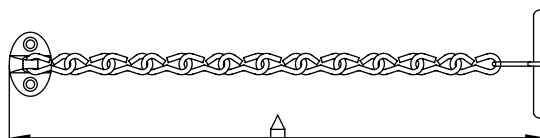


Bronze Round Fixed Ports



- Sold by Each
- Bronze Cast
- Fastener #6 FH

PART NO.	A	DESCRIPTION
8131B	12-1/2"	Brass Anchor Portlight Chain
8130B	8-1/2"	Brass T-Bar Portlight Chain
8130BC	8"	Chrome-Plated Brass T-Bar Portlight Chain

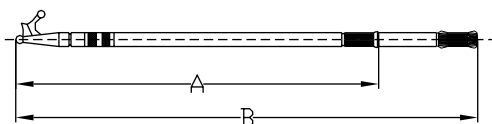


Deluxe Boat Hook

- Sold by Each
- Aluminum Extrusion
- 2 Sections
- Tube Diameter: 1", 1-1/8"



PART NO.	A	B
56304	49"	76"

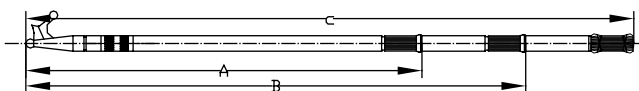


Deluxe Boat Hook

- Sold by Each
- Aluminum Extrusion
- 3 Sections
- Tube Diameter: 1", 1-1/8", 1-1/4"



PART NO.	A	B	C
56305	42"	72-1/2"	92"

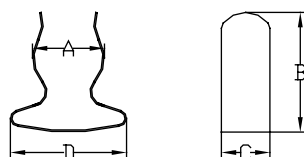


Boat Hook Clip

- Sold by Pair
- 304 Stainless Steel Stamped



PART NO.	A	B	C	D	FASTENER
2938SS	3/4" to 1"	1-11/16"	7/16"	1-3/8"	#6 PH pr
2939SS	1" to 1-1/4"	2-3/8"	3/4"	1-13/16"	#6 PH pr

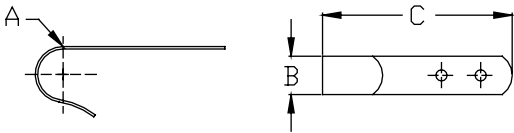


Boat Hook Bracket



- Sold by Pair
- 304 Stainless Steel Stamped
- Fastener: #12 FH

PART NO.	A	B	C
7715S	1"	1"	4"

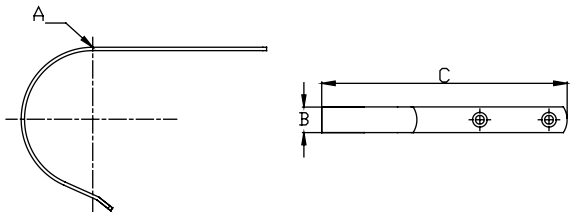


Ring Buoy Hook Bracket



- Sold by Pair
- 304 Stainless Steel Stamped
- Fastener: #12 FH

PART NO.	A	B	C
7716S	4"	3/4"	7-3/16"

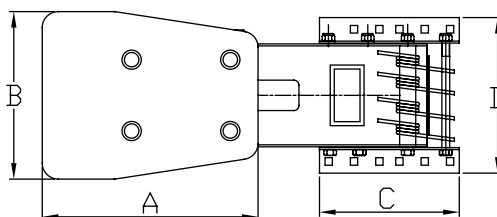


Outboard Motor Bracket



- Sold by Each
- 316 Stainless Steel Cast
- Always use a safety chain or cable to secure the motor

PART NO.	A	B	C	D	HP RATING	WEIGHT LIMIT
5100	10-3/8"	8-1/4"	8"	8-5/8"	To 20 HP	90 lbs.

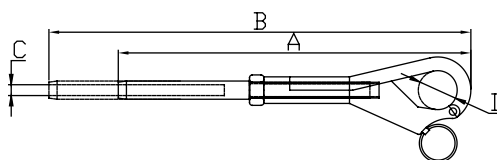


Lifeline Pelican Hook



- Sold by Each
- 316 Stainless Steel Cast

PART NO.	A	B	C	D
6420S	4-1/2"	4-27/32"	1/8" Wire	1/2"
6422S	5-7/8"	5-27/32"	3/16" Wire	9/16"

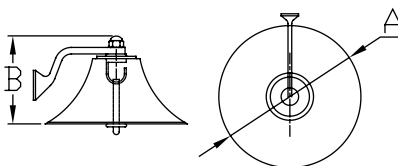


Brass Cast Bell



- Sold by Each
- Brass Cast
- Chrome-Plated Brass Cast

PART NO.	MATERIAL	A	B
1792B	Brass	6"	3-7/8"
1792BC	Chrome-Plated Brass	6"	3-7/8"
1793B	Brass	8"	4-5/8"
1793BC	Chrome-Plated Brass	8"	4-5/8"





Stainless Steel Deck & Fishing Folding Chair

The Amar stainless steel folding deck chair is constructed using marine grade stainless steel 304 tubing and cushioned with high density foam cushions wrapped in white marine grade vinyl. Seat, back, and arm cushions contain long-lasting plastic panels that are designed to withstand the rigors of the marine environment. Unlike the standard plywood panels used in many of our competitors' cushions, our panels will not rot or warp--ensuring years of boating enjoyment.

- Upgrade to a stainless steel deck chair from aluminum
- High quality at an affordable price

CHAIR SPECIFICATIONS	
Overall Height	32"
Overall Width	25-1/2"
Seat Cushion Width	19-1/2"
Seat Cushion Length	14"

FOLDED SPECIFICATIONS	
Folded Height	14-1/2"
Folded Width	25-1/2"
Folded Length	31"

PACKAGE SPECIFICATIONS	
Dimension	26" x 15" x 31-1/2"
Weight	26 lbs.



50001CSW

Drink Holder

- Sold by Each
- 316 Stainless Steel Cast
- Fastener 1/4" 20
- Bottom Mounted



56220S

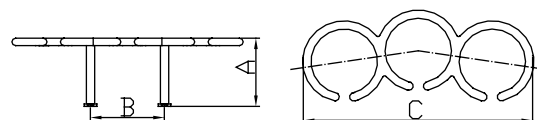
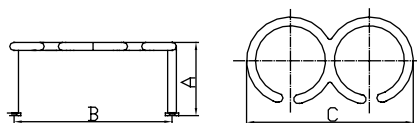
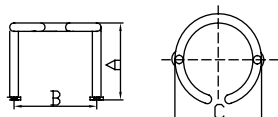


56222S



56224S

PART NO.	HOLDS	A	B	C
56220S	1 Cup	2-25/32"	3-27/32"	4-5/32"
56222S	2 Cups	2-25/32"	8"	8-1/8"
56224S	3 Cups	2-25/32"	4-1/4"	12-1/2"



Studded Drink Holder

- Sold by Each
- 316 Stainless Steel Cast
- Fastener 1/4" Nut



56320S

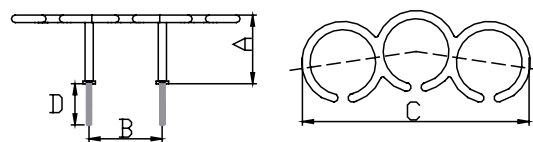
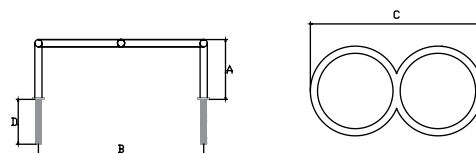
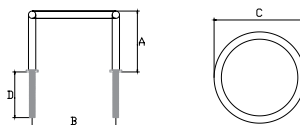


56322S



56324S

PART NO.	HOLDS	A	B	C	D
56320S	1 Cup	2-3/4"	3-7/8"	4-5/32"	2-1/8"
56322S	2 Cups	2-3/4"	8-1/16"	8-3/8"	2-1/8"
56324S	3 Cups	2-3/4"	4-3/16"	12-1/4"	2-1/8"

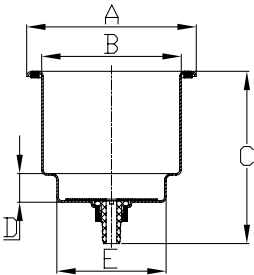


Recessed Drink Holder



- Sold by Each
- 304 Stainless Steel Drawn
- Flush Mounted
- Nylon Hose Barb for 3/8" Hose
- Self-Adhesive Gasket Under Rim

PART NO.	A	B	C	D	E
56228S	4-1/4"	3-1/2"	4-3/8"	5/8"	2-11/16"

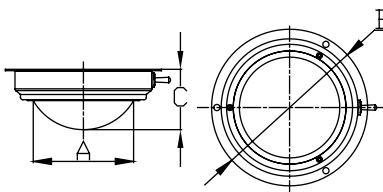


Dome Light



- Sold by Each
- 304 Stainless Steel Stamped Frame
- Fastener #6 RH
- 12V 15W

PART NO.	A	B	C
2124S	4-5/8"	6-7/8"	2-5/16"

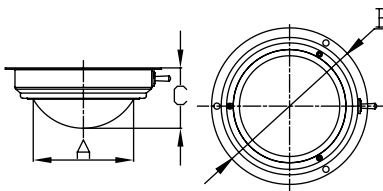


Day/Night Dome Light



- Sold by Each
- 304 Stainless Steel Stamped Frame
- Fastener #6 RH
- 12V 15W
- Clear and Red Bulb

PART NO.	A	B	C
2124SD	4-5/8"	6-7/8"	2-5/16"

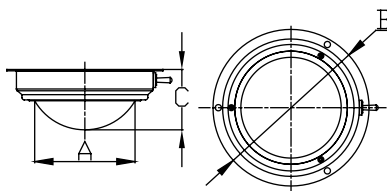


Small Dome Light



- Sold by Each
- 304 Stainless Steel Stamped Frame
- Fastener #4 RH

PART NO.	A	B	C
2126S	3-7/8"	5-1/2"	2"

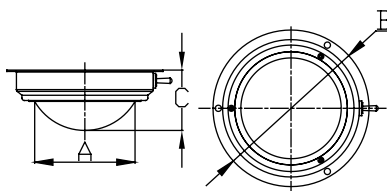


Small Dome Light with Halogen Bulb



- Sold by Each
- 304 Stainless Steel Stamped Frame
- Fastener #4 RH

PART NO.	A	B	C
2126SH	3-7/8"	5-1/2"	2"

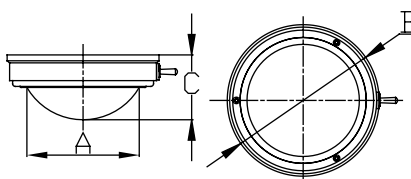


Small Dome Light with Halogen Bulb



- Sold by Each
- 304 Stainless Steel Stamped Frame
- Fastener #6 RH

PART NO.	A	B	C
2120BT	5"	6-1/8"	2-1/8"

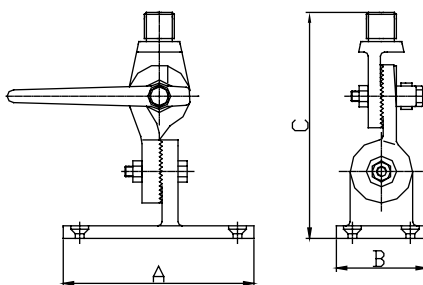


Heavy Duty 4-way Ratchet Mount



- Sold by Each
- 316 Stainless Steel Cast
- Fastener 1/4" FH
- Standard 1"-14 Male Thread
- Through-Hole for VHF or GPS Cable

PART NO.	A	B	C
6520S	3-3/4"	2-1/4"	6"

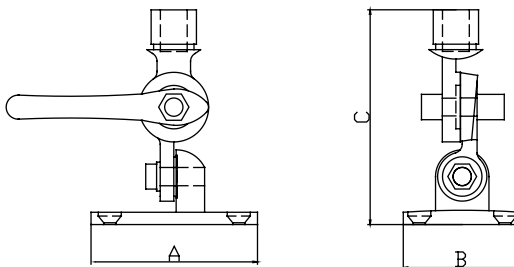


Economic 4-way Ratchet Mount



- Sold by Each
- 316 Stainless Steel Cast
- Fastener 1/4" FH

PART NO.	A	B	C
6508S	3-5/8"	2-9/16"	4-1/2"



Part No.	Page No.
01232SPE	60
02321S	28
02322S	28
02323S	28
02341S	29
02342S	29
02343S	29
02926S	29
02927S	29
07435ES	55
1110B	92
1114B	92
1120B	92
1124B	92
1128B	92
1140B	91
1148B	91
1178B	93
1179B	93
1180B	91
1181B	91
1182B	91
1183B	91
1184B	91
1185B	91
1186B	91
1187B	91
1190B	91
1191B	91
1192B	93
1193B	93
1194B	93
1195B	93
1196B	93
1197B	93
1198B	93
1199B	93
1210U	10
1300B	73
1303B	73
1350KY	72
1350SK-R	71
1350SK-W	71
1360SK-R	71
1360SK-W	71
1380B	73
1382B	73
1393B	73
1450SK-R	71
1450SK-W	71
1460SK-R	71
1460SK-W	71
1792B	96
1792BC	96
1793B	96

Part No.	Page No.
1793BC	96
2030HB-L	54
2030HB-R	54
2030HS-L	54
2030HS-R	54
2030KB-L	55
2030KB-R	55
2032HB-L	54
2032HB-R	54
2032KB-L	55
2032KB-R	55
2034HB-L	54
2034HB-R	54
2034HS-L	54
2034HS-R	54
2034KB-L	55
2034KB-R	55
2054B	66
2058B	65
2060B	65
2062B	60
2062BC	60
2064B	60
2064BC	60
2066SS	61
2072B	58
2088B	56
2100B	57
2120BT	101
2124S	100
2124SD	100
2126S	101
2126SH	101
2400SS	56
2600S	57
2938SS	94
2939SS	94
4022B	58
50001CSW	97
5100	96
53300SL	6
53301SS	7
53305S	7
53305SPB	7
53305SPH	7
53315S	5
53316S	5
53317S	5
53320S	4
53320SC	4
53321S	4
53321SC	4
53322S	4
53322SC	4
54182	74

Part No.	Page No.
54183	74
54184	74
54191	74
54191S	74
54192	74
54192S	74
54193	75
54193S	75
54194	75
54194S	75
54195	75
54196	75
54197	75
54198	75
54199	75
56090T	35
56090T-LE	35
56090T-LT	35
56093P	35
56094P	35
56095P	35
56097E	36
56097T	36
56098R	36
56098W	36
56105S	36
56105SPE	36
56106S	36
56107S	36
56110AP	37
56111AP	37
56135SP	5
56136SP	5
56220S	98
56222S	98
56224S	98
56228S	99
56304	94
56305	94
56320S	98
56322S	98
56324S	98
57738S	6
57739S	6
58700B	32
58701B	32
58703B	32
58704B	32
58706B	32
58707B	32
58824B	74
58825B	74
6002S	77
6002SAIL	79
6002SEU	77

Part No. Page No.

6002SEU-FT	78
6004S	77
6004SAIL	79
6004SEU	77
6004SEU-FT	78
6005S	77
6005SEU	77
6005SEU-FT	78
6005SEU-FTVT	78
6006S	77
6006SAIL	79
6006SEU	77
6006SEU-FT	78
6007S	77
6007SEU	77
6007SEU-FT	78
6007SEU-FTVT	78
6008S	77
6008SEU	77
6008SEU-FT	78
6009S	79
6009SAIL	79
6009SK	79
6009SPE	79
6015S	42
6016S	42
6017SL	42
6017SR	42
6018S	43
6020S	43
6028S	20
6030S	20
6030SPE	20
6030SRD	20
6032S	20
6032SPE	20
6032SRD	20
6034S	20
6036S	20
6037S	21
6038S	21
6039S	21
6040S	21
6044S	21
6046S	21
6048S	21
6050S	22
6052SH	22
6054S	22
6060S	22
6062S	22
6064S	22
6070S	22
6072SP	22
6074S	22

Part No. Page No.

6080S	46
6082S	46
6084S	46
6084SPE	46
6085S	47
6086S	47
6087S	47
6090S	65
6090S-N	65
6092S	66
6094S	66
6100S	49
6104S	48
6106S	48
6108S	48
6110S	48
6112S-L	53
6112S-R	53
6114S	50
6116S	50
6117S	51
6117SR	51
6118S	51
6118SR	51
6120S	51
6121S	51
6122S	51
6126S	50
6200S	12
6202S	13
6204S	13
6206S	13
6208S	14
6231S	23
6231S-L	23
6306SK-W	71
6322S	23
6324S	23
6325S	24
6325S-C	24
6330S	28
6332S	28
6334S	28
6340S	29
6342S	29
6344S	29
6361S	72
6361SD	72
6362S	72
6362SD	72
6420S	96
6422S	96
6500S	59
6508S	102
6520S	102

Part No. Page No.

6539S	67
6564S	74
6566S	74
6598S	57
6599S	57
6600S	80
6601S	80
6601SCAP	80
6602S	80
6602SCAP	80
6603S	80
6603SCAP	80
6650N	84
6650S	82
6650S-L	82
6651N	84
6651N-90	84
6651S	82
6651S2	83
6651S-L	82
6651S-L2	83
6652N	84
6652S	82
6652S2	83
6652S-L	82
6652S-L2	83
6653N	84
6653N-90	84
6653S	82
6653S-L	82
6654N	84
6654S	82
6654S2	83
6654S-L	82
6654S-L2	83
6655N	84
6655N-90	84
6655S	82
6655S2	83
6655S-L	82
6655S-L2	83
6800S	30
6802S	30
6802SH	30
6804SH	30
6810S	30
6810SEU	30
6811S	30
6811SEU	30
6813SEU	31
6815S	31
6815SEU	31
6816S	31
6816SEU	31
6817SEU	31

Part No.	Page No.	Part No.	Page No.	Part No.	Page No.
6820S	32	7113SLK	62	7719ES	49
6821S	32	7118S	62	7721ES	52
6822S	32	7119SLK	62	7721S	74
6825S	33	7120S	63	7722ES	48
6828S	33	7121S	63	7722S	74
6830S	33	7300SCK	70	7723ES	49
6830S-PIN	33	7301SCK	70	7723S	74
6832S	34	7308	68	7723S-V	74
6834S	34	7319SRK	68	7724ES	49
6839S	34	7320SRK	68	7725ES	49
6840S	38	7327NT	68	7726ES	53
6841S	38	7328NT	68	7727ES	52
6842S	38	7329NT	68	7728ES	52
6843S	38	7400PC	68	7728S	75
6845S	38	7401PC	68	7729ES	52
6846S	38	7402BFC	69	7731ES	50
6847S	38	7402PC	68	7731SR	19
6848S	38	7402PC10	68	7732ES	53
6849S	38	7403BFC	69	7732S	19
6850S	38	7403PC	68	7732SL	19
6851S	38	7405PC	68	7732SR	19
6852S	38	7406-PC	70	7733SL	19
6853S	38	7406-SPC	70	7734SR	19
6855S	38	7406-SPE	70	7736S	19
6856S	38	7408BFC	69	7736SR	19
6857S	38	7500	70	7737S	19
6858S	38	7501	70	7740S	67
6859S	38	7502	70	7742S	67
6860S	41	7503	70	7743S	67
6860S-P	41	7504	70	7750S	59
6860S-S	41	7505	70	7751S	59
6861S	41	7506	70	7767S	27
6861S-P	41	7507	70	7767SPE	27
6861S-S	41	7508	70	7768S	27
6862S	41	7509	70	7769S	27
6865S	41	7549	70	7772S	27
6866S	41	7550U	10	7846S-B	25
6867S	41	7551U-A	10	7848S-B	25
6870S	39	7551U-B	10	7848S-D	26
6871S	39	7558U	10	7848S-S	25
6872S	39	7560U	10	7850S-B	25
6873S	39	7564U	10	7850S-S	25
6874S	39	7565S	14	7850S-SW	26
6876S	39	7566S	14	7852S-B	25
6877S	39	7570S	81	7852S-S	25
6878S	40	7571S-TWC	81	7852S-SW	26
6879S	40	7573S-TWC	81	7854S-B	25
6880S	39	7574S	81	7856S-B	25
6895S	40	7575S-A12	81	7858S-B	25
6896S	40	7576S-A16	81	7859S-BL	26
6897S	43	7580CSE	81	7861S-S	25
7100-01-DK	58	7581CSE	81	7863S-B	25
7100G	62	7712ES	55	7864S-B	25
7100S	62	7715S	94	7866S-BL	26
7112S	62	7716S	94	7867S-S	25

[illegible]



www.whitewatermh.com



West Coast

14716 Central Ave., Chino, CA 91710
Tel: 909-393-6100

East Coast

13663 Automobile Blvd., Clearwater, FL 33762
Tel: 727-572-8871