



WHITE WATER
MARINE HARDWARE

Established 1982

Catalog No. 28



Manufacturing excellence for over 30 years

ABOUT US

White Water Marine Hardware has been in the business of innovative product design and manufacturing for over 30 years. We began as an OEM supplier for boat manufacturers and later saw the opportunity to provide manufacturing support to other OEMs and marine hardware distributors.

We own and operate three factories which enable us to provide our customers with the most competitive pricing and quality. Many companies are engaged in offshore manufacturing but often receive mixed results. We successfully navigate these challenges through White Water's owner Jimmy Ma. Based out of Shanghai, Jimmy along with his team of engineers and factory foremen directly manage all overseas operations. This level of hands-on involvement displays our commitment to quality in our Amar brand of hardware.

Our distribution centers on both the East and West Coast allow us flexibility in responding to customer needs through:

- Minimized time differences (Pacific Standard Time vs. Eastern Standard Time, etc.)
- Shorter transit times and reduced freight costs
- Combined order fulfillment procedures aimed at better inventory flow

We take great pride in our ability to understand and respond to our customers' needs. We offer unfailing quality and timely delivery at truly competitive prices.

MANUFACTURING CAPABILITIES

White Water Marine Hardware owns and operates several manufacturing facilities in China. Our manufacturing capabilities include:

- Precision Casting in SS, Aluminum, Brass and Bronze
- Metal Fabrication
- CNC Machining
- Plastic Injection Molding
- Welding
- Polish, Passivation, and other types of metal finishing

CONTACT INFORMATION

WEST COAST
14716 Central Avenue
Chino, CA 91710
Tel: (909) 393-6100

EAST COAST
13663 Automobile Boulevard
Clearwater, FL 33762
Tel: (727) 572-8871

PRICING

Prices are effective through December 30th of the calendar year. New pricing will be by November before the new year and will be effective January 1st.

CREDIT

Customers may apply for an open line of credit by filling out the necessary forms and pending approval. Alternatively, orders may be shipped COD to avoid delay.

White Water reserves the right to revoke change or revoke credit terms contingent upon the customer's payment history. Notice will be provided to the customer of any changes in credit terms.

INVENTORY / LEAD TIME

White Water Marine Hardware will maintain certain inventory levels for our standard product line and custom products requested by the customer on White Water Marine Hardware's Custom Stock Agreement form. These products will ship either from our California or Florida warehouse location with a 5-7 business day lead time.

All products excluded from our standard inventory and the Custom Stock Agreement form may require up to a 60 - 90 business day lead time depending on item availability.

3RD PARTY DROP SHIP POLICY

Our drop ship program is free of handling charges.

However, in order to increase efficiency in handling drop ship orders, avoid losses, delays, damages, and billing issues, we will only be offering pre-paid services and added onto the invoice. The freight services offered are UPS, USPS, and LTL carriers. This only affects customers who request third party billing, freight collect customers are not affected.

RETAIL PACKAGING

Retailers and Distributors may purchase items in retail display packaging. Retail display packaged items are identified with a "-1" after the part number on your purchase order.

For example, if a customer would like to purchase a cup holder (part # 56228S) with shell packaging, simply put "56228S-1" on the purchase order.

Standard display packaging may consist of injection molded shells with logo inserts, shells with logo cardboard backing, and poly bags with card headers.

WARRANTY AND RETURNS

WARRANTY:

White Water Marine Hardware warrants to the original purchaser that the hardware will be free from corrosion, under normal use and service, for (2) years after the purchase date.

This limited warranty is not applicable if the hardware is damaged by accident, improper installation, unreasonable use, lack of proper maintenance, unauthorized repair or modification, or any other causes not arising out of defects in material and/or workmanship.

Under this warranty, White Water Marine Hardware's obligations are limited to repair of the product at one of White Water Marine Hardware's plants, or replacement of the product at White Water Marine Hardware's discretion and at White Water Marine Hardware's expense. Any expenses involved in the removal, reinstallation, or transportation of the products are not covered by this warranty.

This document contains White Water Marine Hardware's only express warranty of the product. This warranty is expressly made in lieu of any other incidental or consequential costs, expenses or damages. This warranty gives the purchaser specific legal rights, and the purchaser may also have other rights which vary from state to state.

RETURNS and EXCHANGES:

The product in question has to be returned to White Water Marine Hardware via shipment options approved and agreed on by White Water Marine Hardware. Returns must also include a copy of the original invoice. The acceptance by White Water Marine Hardware of any product returned shall not be deemed an admission of the defect of product or violation of the warranty.

Returns must be accompanied by a Return Merchandise Authorization (RMA) number issued by White Water.

Returns of product must be in the original and unused condition. Include a copy of the packing slip or invoice with your return authorization number

Returns will have 15% handling and re-stocking fee.

Returns may be processed up to 1 year after the purchase date. Exceptions will be made on a case by case basis.

CLAIMS:

It is the responsibility of the carrier for damages or loss of products while in transit. In case of such shortage or damage, the carrier should be contacted and claims should be filed with the carrier immediately. Claim processes may vary from carrier to carrier.

All claims for shortage or damage must be filed within 7 days upon receipt of goods.

PRODUCTS, CONTENT, AND SPECIFICATIONS

We reserve the right to improve items contained within this catalog without prior notification. Although we strive to ensure that product information within our catalog is correct, typographical errors may occur and provide you with inaccurate or incomplete information. Similarly, all features, content, specifications, of products described within this catalog are subject to change at any time without notice. Certain weights, measures and descriptions are approximate and are provided for your convenience purpose only.



I-III ABOUT US

4-7 ROD HOLDERS

Stainless Steel Rod Holders
Rod Holders with Caps
Outrigger Pole Holders

8-13 ANCHORING AND MOORING EQUIPMENT

Anchor Rollers and Wheel Replacements
Anchor Swivels and Chain Stopper
Deck Pipes
Mooring Bitt

14-18 BOARDING HARDWARE

Telescoping Ladders
Transom Ladders
Sliding Ladders
Under Platform Mount
Aluminum Dive Ladder
Replacement Gudgeons
Swim Platform Bracket

19-27 CLEATS, CHOCKS, LIFTING EYE, SKI TOWS

Herreshoff and Mooring Cleats
Skene, Bow, Angled Chocks
Lifting Eye and Sling
Bow and Stern Eye
Ski Tow
Pad Eyes

28-35 CANVAS TOP FITTINGS AND ACCESSORIES

Jaw Slides
Top Cap/ Outside Eye Ends
Top Inserts / Inside Eye Ends
Deck Hinge
Toggle and Quick Release Pins
Black Knobs with Set Screws
Eye Straps
Cover Support Poles

36-42 RAIL FITTINGS

Rail Bases
Tees, Elbows, and Connectors
Handrail Stanchions
Stanchion Poles and Bases
Grab Rails

**43-61 DOOR & CABINET HARDWARE, AND BRACKETS**

Hinges
Door Holders, Hooks, Barrel Bolts, Catches, Hasps
Latches
Table Brackets
Handles and Pulls

**62-64 STEERING WHEELS AND ENGINE CONTROLS**

Destroyer Wheels
Sailboat Wheels
Control Knobs

**65-69 VENTILATION AND DRAINAGE**

Cowl Vents and Deck Plates
Midget, Louvered, Slotted Vents
Garboard Plus and Drain Plugs
Drain Cover

**70-75 FUEL FITTINGS**

Deck Fills
Fuel Vents
Exhausts
Thru-Hulls

**76-84 PORTLIGHTS AND DECK HATCHES**

Stainless Steel Portlights
Bronze Portlights
Stainless Steel Deck Hatches
Hatch Fittings and Fasteners

**85-91 MISCELLANEOUS HARDWARE**

Boat Hooks and Clips
Outboard Motor Bracket
Pelican Hooks
Bells
Deck Chair
Drink Holders
Lights
Antenna Mounts

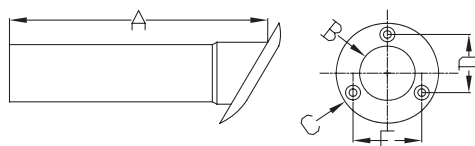
92-94 INDEX

Stainless Steel Cast Flush Mount Rod Holder—Heavy Duty, Open Drain



- 316 Stainless Steel Cast Flange
- 304 Stainless Steel Tube
- Round Flange
- White PVC Liner

PART NO.	ANGLE	A	B	C	D	E
53320S	30°	9-1/4"	1-5/8"	4"	2-3/8"	2-3/4"
53321S	15°	9"	1-5/8"	4"	2-3/8"	2-3/4"
53322S	0°	8"	1-5/8"	4"	2-3/8"	2-3/4"

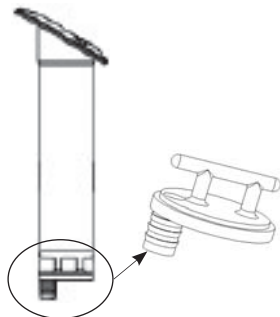


Stainless Steel Cast Flush Mount Rod Holder —Heavy Duty, Closed Drain Tail

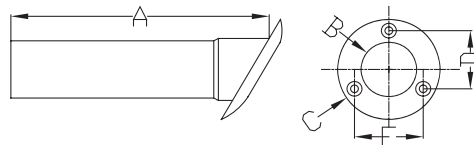


- 316 Stainless Steel Cast Flange
- 304 Stainless Steel Tube
- Round Flange
- White PVC Liner
- Closed Bottom with 1/2" Drain Tail

PART NO.	ANGLE	A	B	C	D	E
53320SC	30°	9-1/4"	1-5/8"	4"	2-3/8"	2-3/4"
53321SC	15°	9"	1-5/8"	4"	2-3/8"	2-3/4"
53322SC	0°	8"	1-5/8"	4"	2-3/8"	2-3/4"



1/2" Drain Tail

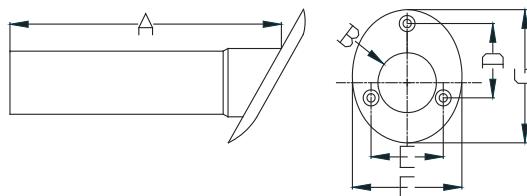


Stainless Steel Cast Flush Mount Rod Holder—Standard, Open Drain

- 316 Stainless Steel Cast Flange
- 304 Stainless Steel Tube
- Oval Flange
- White PVC Liner



PART NO.	ANGLE	A	B	C	D	E	F
53315S	30°	8-7/8"	1-5/8"	4-1/4"	2-1/2"	2-5/8"	3-5/8"
53316S	15°	8-3/4"	1-5/8"	4-1/4"	2-1/2"	2-5/8"	3-5/8"
53317S	0°	8-1/4"	1-5/8"	4-1/4"	2-1/2"	2-5/8"	3-5/8"

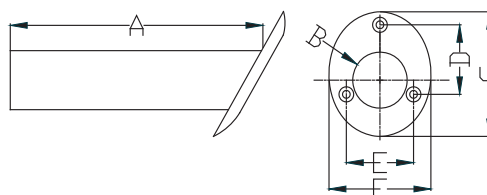


Stainless Steel Cast Flush Mount Rod Holder—Black PVC Liner

- 316 Stainless Steel Cast Flange
- 304 Stainless Steel Tube
- Oval Flange
- Black PVC Liner



PART NO.	ANGLE	A	B	C	D	E	F
56135SP	30°	9"	1-5/8"	4-1/4"	2-1/2"	2-3/8"	3-1/2"

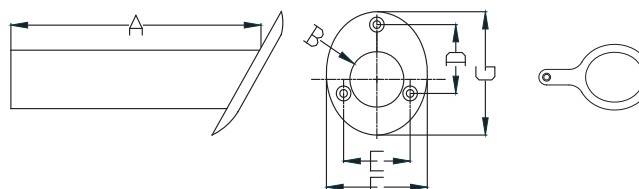


Stainless Steel Cast Flush Mount Rod Holder —Black PVC Liner and Cap

- 316 Stainless Steel Cast Flange
- 304 Stainless Steel Tube
- Oval Flange
- Black PVC liner with Cap



PART NO.	ANGLE	A	B	C	D	E	F
56136SP	30°	9"	1-5/8"	4-1/4"	2-1/2"	2-3/8"	3-1/2"
56136SPC	Replacement PVC cap only for 56136SP						

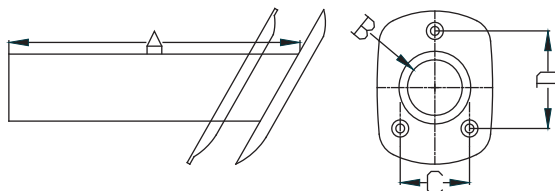


Stainless Steel Stamped Flush Mount Rod Holder



- 304 Stainless Steel Stamped Flange
- 304 Stainless Steel Tube
- 30° Angle
- Oblong Flange
- Black PVC Liner

PART NO.	FLANGE SIZE	A	B	C	D
57738S	3-1/2" x 4-9/16"	9-5/16"	1-5/8"	2-1/8"	3-1/8"
57738SR	Replacement liner				

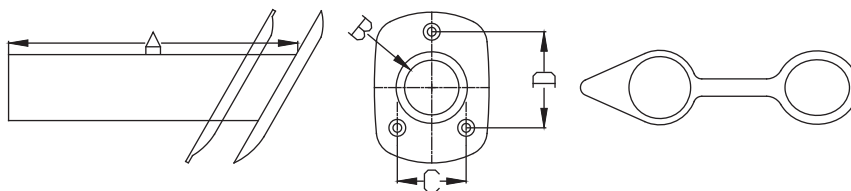


Stainless Steel Stamped Flush Mount Rod Holder with PVC Cap



- 304 Stainless Steel Stamped Flange
- 304 Stainless Steel Tube
- Oblong Flange
- 30° Angle
- Black PVC Liner with Cap

PART NO.	FLANGE SIZE	A	B	C	D
57739S	3-1/16" x 4-9/16"	9-5/16"	1-5/8"	2-1/8"	3-1/8"
57739SR	Replacement liner with Cap				

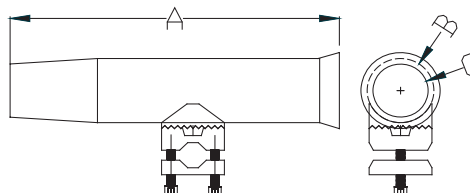


Stainless Steel Clamp-on Adjustable Rod Holder



- 316 Stainless Steel Clamp
- 304 Stainless Steel Tube
- White Plastic Liner
- Versatile Design Allows a Full 360° Adjustment
- For 3/4"—1-1/4" Tube

PART NO.	A	B	C
53300SL	9-3/4"	2-1/4"	1-5/8"

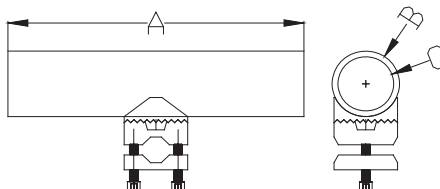


Stainless Steel Clamp-On Adjustable Rod Holder



- 316 Stainless Steel Clamp
- 304 Stainless Steel Tube
- Black Plastic Liner
- Versatile Design Allows a Full 360° Adjustment
- For 7/8"—1" Tube

PART NO.	A	B	C
53301SS	9-1/4"	2-1/4"	1-5/8"

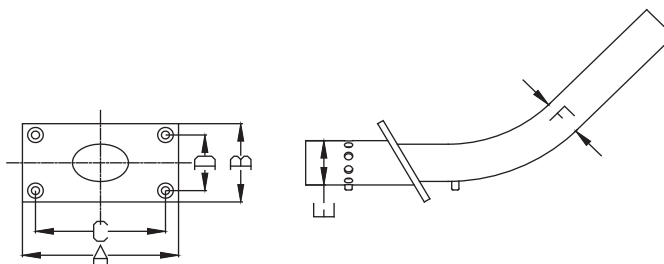


Flush Mount Outrigger Pole Holders with Spring Lock



- 316 Stainless Steel Cast Base And Holder
- 304 Stainless Steel Tube
- 1/4" Mounting Bolts
- Compatible Outrigger Poles With 1-1/8" Butt Diameter

PART NO.	A	B	C	D	E	F
53305S	5-1/4"	2-5/8"	4-1/4"	1-7/8"	1-1/2"	1-3/16"
53305SB	Base only					
53305SH	Holder only					

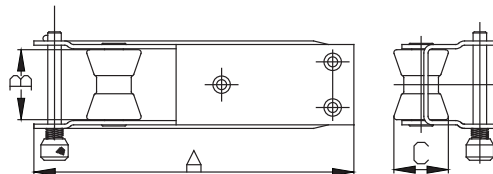


Anchor Roller

- 304 Stainless Steel Stamped



PART NO.	THICKNESS	FINISH	A	B	C
ARSST-01	5/32"	Mirror	7"	2"	1-1/2"

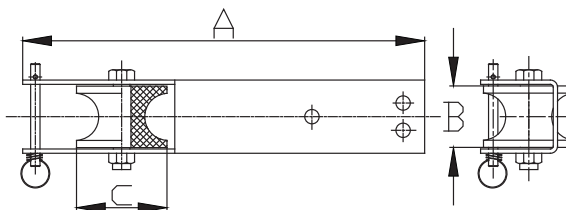


Long Fairlead Anchor Roller

- 304 Stainless Steel Stamped



PART NO.	THICKNESS	FINISH	A	B	C
ARSW-03	5/32"	Satin	11"	1-3/4"	2-1/2"
AR7552S	1/8"	Mirror	11"	1-3/4"	2-1/2"

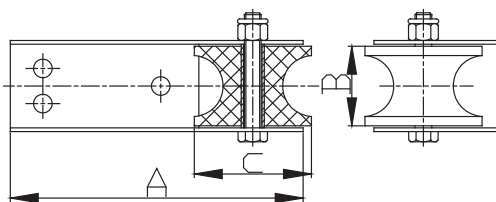


Small Fairlead Anchor Roller

- 304 Stainless Steel Stamped



PART NO.	THICKNESS	FINISH	A	B	C
ARSW-02	5/32"	Satin	6-1/4"	1-3/4"	2-1/2"
AR7550S	5/64"	Mirror	6-1/4"	1-3/4"	2-1/2"

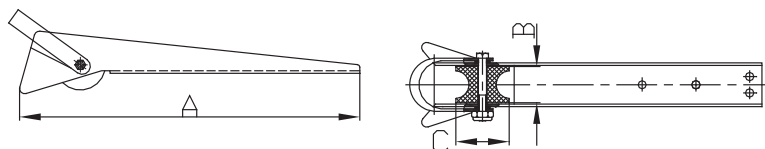


Small Anchor Roller

- 304 Stainless Steel Stamped



PART NO.	THICKNESS	FINISH	A	B	C
AR7557S	1/8"	Satin	15-1/4"	1-3/4"	2-1/2"

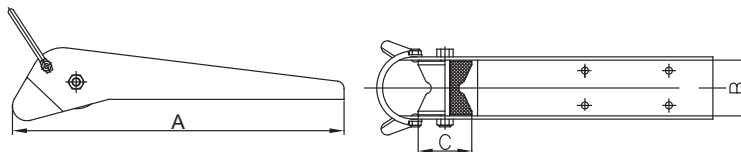


Medium Anchor Roller



- 304 Stainless Steel Stamped

PART NO.	FINISH	A	B	C
ARWU-04	Satin	18"	3"	3"

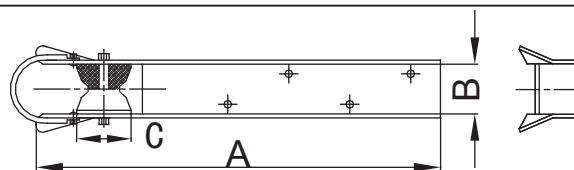


Narrow Anchor Roller



- 304 Stainless Steel Stamped

PART NO.	FINISH	A	B	C
ARWC-01	Satin	19-7/8"	2	2-3/4"
ARWC-01HP	Mirror	19-7/8"	2-1/2"	2-3/4"

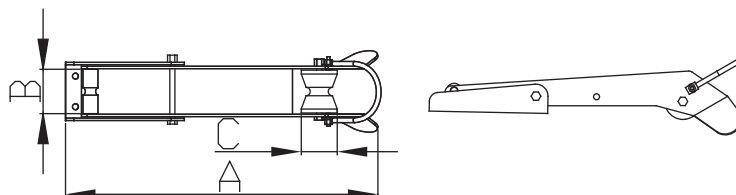


Pivoting Anchor Roller



- 304 Stainless Steel Stamped

PART NO.	FINISH	A	B	C
AR7561S	Mirror	20-1/2"	2"	2-7/8"

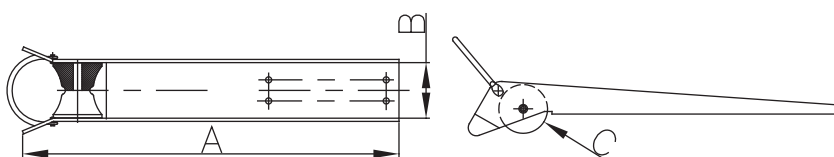


Long Platform Anchor Roller



- 304 Stainless Steel Stamped

PART NO.	FINISH	A	B	C
ARWU-03	Satin	23-3/4"	3-3/8"	3"

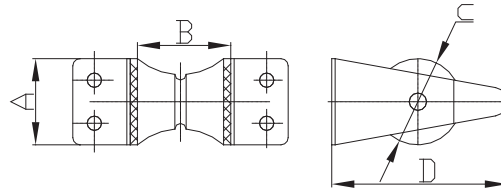


Platform Anchor Roller

- 304 Stainless Steel Stamped



PART NO.	FINISH	A	B	C	D
ARSW-04	Satin	3"	1-3/4"	2-1/2"	6"
ARSW-05	Satin	3"	3-3/8"	3"	6"
ARSW-06	Satin	5-1/2"	3-3/8"	3"	4"

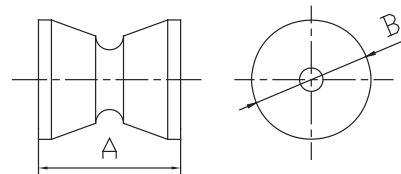


Replacement Wheels for Anchor Rollers

- Injection Molded Delrin Or Polyurethane (PU)
- All Wheels Will Be Switched To Delrin Once Current Inventory Is Depleted.



PART NO.	MATERIAL	A	B	ANCHOR MODEL
7550U	PU	1-3/4"	2-1/2"	AR7550S, ARSW-02, AR7552S, ARSW-03, AR7557S, ARSW-04
7551U-A	Delrin	2-13/16"	2-3/8"	Front/Big roller for AR7561S
7551U-B	Delrin	2-11/16"	1"	Rear/Small roller for AR7561S
7558U	Delrin	3"	3"	ARWU-04
7560U	PU	2-1/2"	2-3/4"	ARWC-01HP
7564U	PU	3-3/8"	3"	ARWU-03, ARSW-05, ARSW-06
1210U	Delrin	4"	4"	

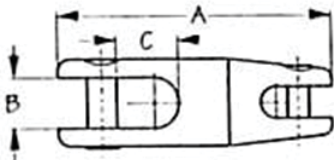


Anchor Swivel

- 304 Stainless Steel Stamped



PART NO.	A	B	C	CHAIN SIZE	WORKING LOAD
AS7530S	3-9/16"	5/8"	13/16"	1/4"—5/16"	4500lb
AS7532S	4-11/16"	13/16"	1-1/16"	5/16"—1/2"	7000lb
AS7536S	5-1/2"	1-1/8"	1-3/16"	1/2"—5/8"	10000lb

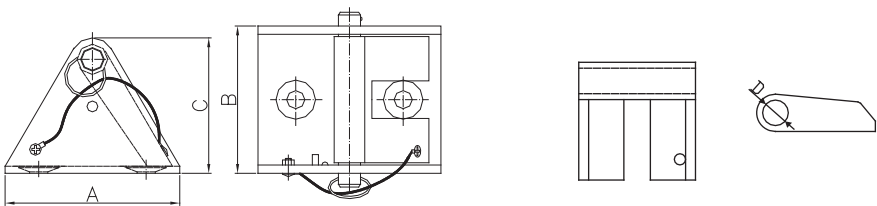


Deluxe Chain Stopper

- 316 Stainless Steel Cast
- Works With Your Anchor Roller To Take The Tension Off Your Windlass.
- Mounts Alone Or Inside Most Anchor Rollers.
- Fits 1/4" To 3/8" Chain.
- Removable Pawl Flips Up When Not In Use.
- Prevents Damage To Windlass.



PART NO.	A	B	C	D
AS7502S	2-3/4"	3-1/8"	2-7/16"	1/2"

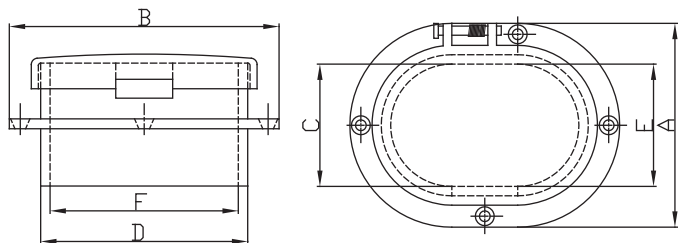


Spring Hinged Deck Pipe — Oval



- 316 Stainless Steel Cast
- Slot Opening: 1-1/2" x 1/2"

PART NO.	A	B	C	D	E	F
AS7510S	4-1/16"	5-5/8"	2-3/4"	4-1/8"	2-7/16"	3-3/4"

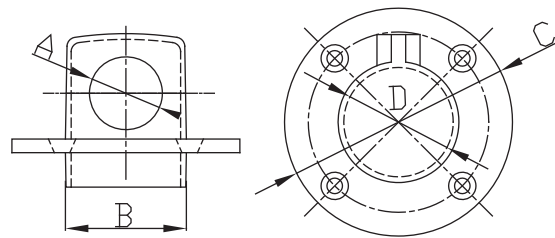


Spring Hinged Deck Pipe — Round



- 316 Stainless Steel Cast

PART NO.	A	B	C	D
AS7520S	1"	1-3/4"	3-1/8"	1-1/2"

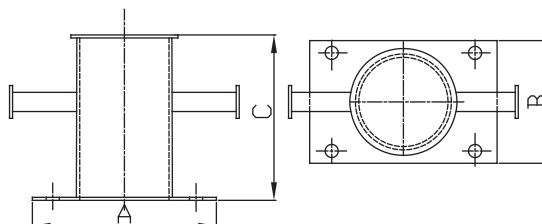


Mooring Bitt



- 304 Stainless Steel Tube 304 Stainless Steel Stamped
- Heliarc Welded with Mirror Finish
- Pre-Drilled Stainless Steel Backing Plate

PART NO.	A	B	C
7566S	8"	4-1/2"	6-3/16"

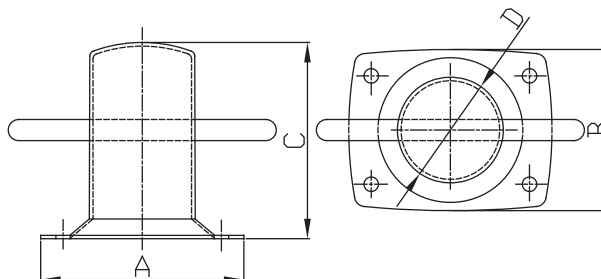


Small Mooring Bitt — Bolt Through



- 304 Stainless Steel Tube 304 Stainless Steel Stamped
- Heliarc Welded with Mirror Finish
- Pre-Drilled Stainless Steel Backing Plate

PART NO.	A	B	C	D
7565S	4-13/16"	3-13/16"	4-3/4"	2-1/2"

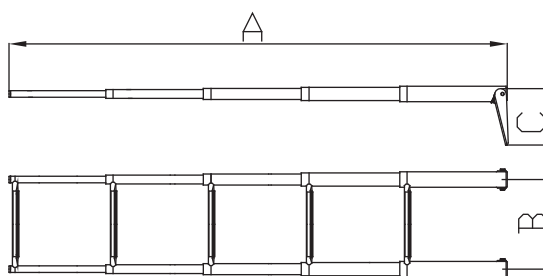


Over Platform Telescoping Ladder



- 304 Stainless Steel Tubing
- Ladder Folds Onto Swim Platform For Easy Stowing
- Bungee Cord Securing Strap Included
- Nylon Bushings Between Ladder Segments Provide An Additional Safety Function To Prevent Accidental Deployment

PART NO.	STEP NO.	A DEPLOYED	A STOWED	B	C
B00311R	2	23-1/2"	13-1/2"	10"	5-3/4"
B00301R	3	34-5/8"	14-1/2"	10"	7"
B00301R-5	3	35"	14-1/2"	10"	5-13/16"
B00351R	4	45-1/2"	15-1/2"	10"	6-1/2"

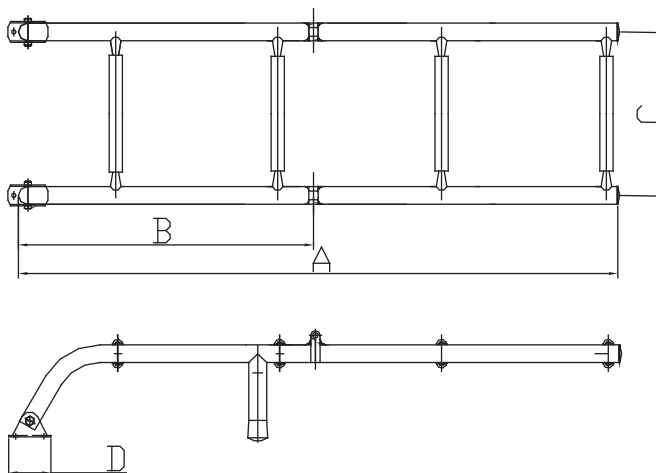


304 Stainless Steel Transom Ladder -- 4 Step



- 304 Stainless Steel Tubing
- 316 Stainless Steel Cast Hinges
- Ladder Folds Up For Easy Stowing

PART NO.	STEP NO.	A	B	C	D
B00361	4	33-1/2"	16-1/2"	9-1/4"	2-3/8"
B00361-G		Replacement gudgeon only			

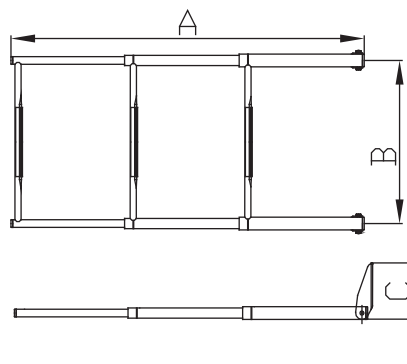


Wide Telescoping Ladder



- 304 Stainless Steel Tubing
- Ladder Folds Onto Swim Platform For Easy Stowing
- Bungee Cord Securing Strap Included
- Nylon Bushings Between Ladder Segments Provide An Additional Safety Function To Prevent Accidental Deployment

PART NO.	STEP NO.	A	A	B	C
		DEPLOYED	STOWED		
B00301WH	3	32"	15"	17"	7"
B00351WH	4	45-11/16"	15-1/4"	17-1/8"	6-1/2"

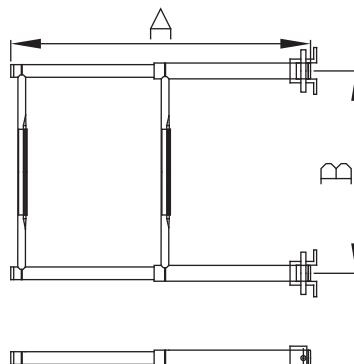


Under Platform Telescoping Ladder -- 2 Step

- 304 Stainless Steel Tubing
- Ladder Slides Into The Bracket For Stowing
- Bungee Cord Securing Strap Included
- Nylon Bushings Between Ladder Segments Provide An Additional Safety Function To Prevent Accidental Deployment



PART NO.	STEP NO.	A	A	B
		DEPLOYED	STOWED	
B00331	2	23-1/2"	13-1/2"	10"
B00331-BKT	Replacement bracket and straps for B00331			
B00330	3	35"	14-1/2"	10"
B00330-BKT	Replacement bracket and straps for B00330			

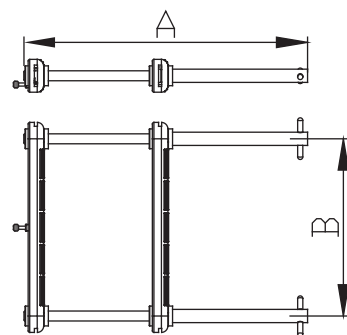
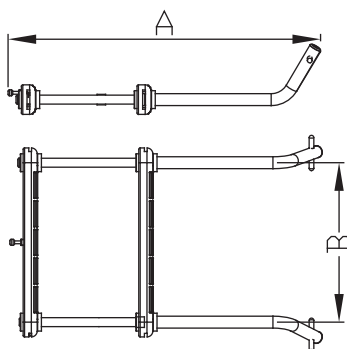


Under Platform Telescoping Ladder



- 304 Stainless Steel Tubing
- Heavy Duty Mounting Hardware And Securing Strap Included
- Designed With Self-Locking Angled Support Brackets
- Additional Under Platform Mounting Brackets Included
- Available In Straight And Curved Mounting Options

PART NO.	STEP NO.	A	A	B	TYPE
		DEPLOYED	STOWED		
AM1101S	2	27-3/8"	18"	13-3/8"	Curved
AM1301S	2	23-5/8"	14-3/16"	13-3/8"	Straight
AM7215SA	Optional bracket for AM1101S & AM1301S				

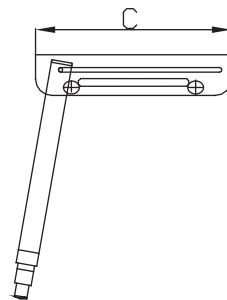
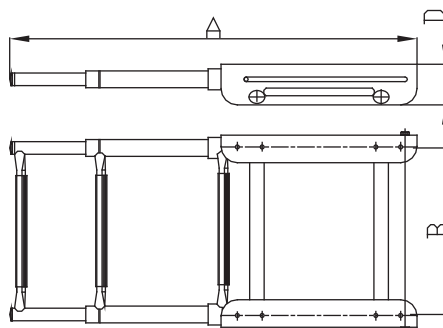


Under Platform Telescoping Sliding Ladder

- 304 Stainless Steel Tubing
- Ladder Stores Neatly Into Its Frame
- Bungee Cord Secures The Ladder In Place



PART NO.	STEP NO.	A	A	B	C	D
		DEPLOYED	STOWED			
B00311UPM	2	27-3/8"	11-3/4"	10"	9-3/4"	2-7/16"
B00301UPM	3	34-1/2"	14-11/16"	10"	11-13/16"	2-9/16"
B00351UPM	4	45-1/8"	15-11/16"	10"	12-1/2"	2-13/16"

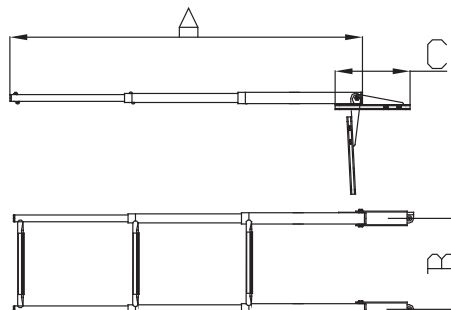


Over Platform Telescoping Sliding Ladder

- 304 Stainless Steel Tubing
- Gudgeons And Ladder Slide Out For Additional Clearance Over The Side Of Your Boat



PART NO.	STEP NO.	A	A	B	C
		DEPLOYED	STOWED		
B00401SLD	3	39-5/16"	16-1/2"	10"	8-1/2"
B00451SLD	4	45-9/16"	15-3/4"	10"	8-1/2"

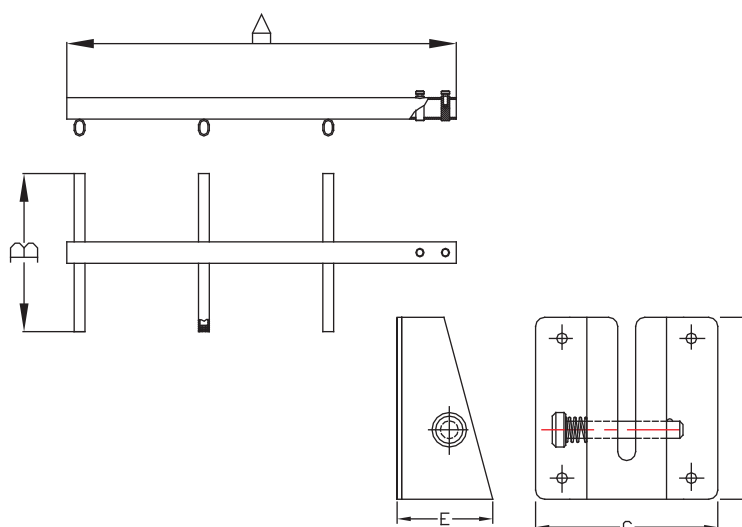


Aluminum Sport / Diver Ladder

- Aluminum Extrusion
- Designed For All Vertical, Horizontal, And Break-Away Mounting Hardware Options
- Stainless Steel Quick Release Transom Mounting Bracket Included
- Steps With Rubber Pads



PART NO.	STEP NO.	A	B	C	D	E
AM1303AL	3	36"	14"	4"	4"	2"
AM1303AL-B	Mounting bracket for AM1303AL					



Transom Gudgeon

- 304 Stainless Steel Stamped



Long Tab

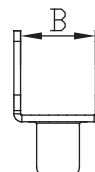
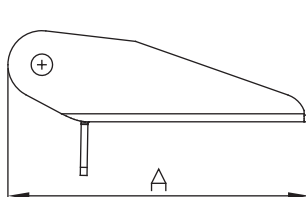


Short Tab



No Tab

PART NO.	A	B	CURVED TAB	LADDER
7731SR	5-3/4"	1-1/8"	SHORT	B00311R
7732S	5-13/16"	1-3/8"	x	
7732SL	5-1/2"	1-3/8"	LONG	
7732SR	5-13/16"	1-3/8"	SHORT	B00301R-5
7733SL	5-13/16"	1-3/8"	x	
7734SR	6-1/2"	1-3/4"	SHORT	B00351R
7736S	7"	1-1/16"	x	
7736SR	7"	1-3/8"	SHORT	B00301R, B00301WH
7737S	4-1/2"	1-1/16"	x	
7737SPE	4-1/2"	1-1/16"	LONG	

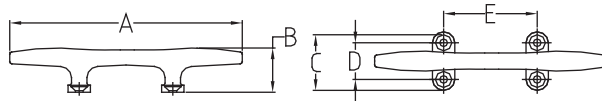


Herreshoff Cleat



• 316 Stainless Steel Cast

PART NO.	A	B	C	D	E
6028S	4-1/2"	1-1/16"	1-13/32"	7/8"	1-7/8"
6030S	6"	1-1/4"	1-7/8"	1-1/16"	2-1/4"
6032S	8"	1-1/2"	2-3/16"	1-3/8"	2-7/8"
6034S	10"	1-7/8"	2-11/16"	1-3/4"	3-11/16"
6036S	12"	2-3/16"	2-3/4"	1-5/16"	3-3/4"

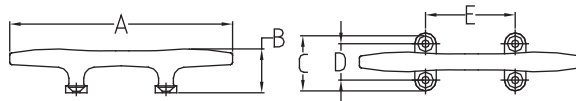


Heavy Duty Herreshoff Cleat



• 316 Stainless Steel Cast

PART NO.	A	B	C	D	E
6037S	8"	2"	2-9/16"	1-3/4"	3-5/16"
6038S	10"	2-7/16"	2-7/8"	1-7/8"	3-3/4"
6039S	12"	2-3/4"	3-1/2"	2-1/2"	4-13/16"
6040S	15"	3-3/4"	3-7/8"	2-9/16"	4-27/32"

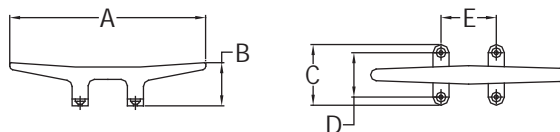


Mooring Cleat



• 316 Stainless Steel Cast

PART NO.	A	B	C	D	E
6044S	5-3/4"	1-1/4"	2-3/8"	1-5/8"	2"
6046S	8"	1-5/8"	2-3/8"	1-5/8"	2-1/4"
6048S	9-3/4"	1-3/4"	2-5/8"	1-3/4"	2-3/16"

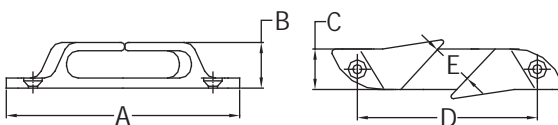


Skene Angled Bow Chocks



- 316 Stainless SteelCast

PART NO.	A	B	C	D	E	UNIT
6050S	4-1/2"	1-5/16"	3/4"	3-5/16"	1/2"	Pairs
6052SH	6"	1-15/16"	1-1/16"	4-5/8"	7/8"	Pairs
6054S	7-7/8"	1-7/8"	1"	6-3/8"	1-1/8"	Pairs

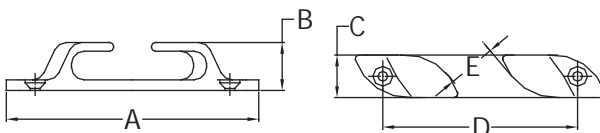


Angled Bow Chocks



- 316 Stainless Steel Cast

PART NO.	A	B	C	D	E	UNIT
6060S	4-1/2"	1"	3/4"	3-5/16"	1/2"	Pairs
6062S	6"	1-1/8"	1-1/16"	4-3/4"	1"	Pairs
6064S	9"	1-3/4"	1-5/8"	7-3/16"	1-1/4"	Pairs

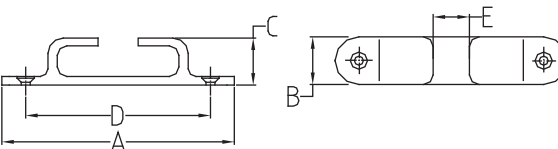


Bow Chocks



- 316 Stainless Steel Cast

PART NO.	A	B	C	D	E	UNIT
6070S	5"	15/16"	1-1/8"	3-15/16"	1-1/8"	Pairs
6072SP	6"	1-1/16"	1-1/8"	4-3/4"	1-3/8"	Pairs
6074S	9"	1-5/8"	1-3/4"	7-3/16"	1-1/4"	Pairs



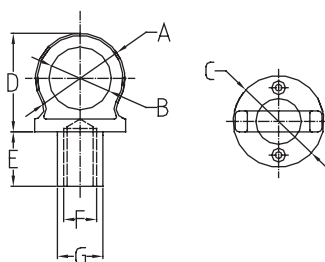


Lift Ring



- 316 Stainless Steel Cast

PART NO.	A	B	C	D	E	F	G
6231S	2-7/32"	1-1/2"	2-3/16"	2-3/8"	7/8"	5/8-11UNC	31/32"
6231S-L	2-7/32"	1-3/8"	2-1/4"	3-3/16"	15/16"	5/8-11UNC	31/32"

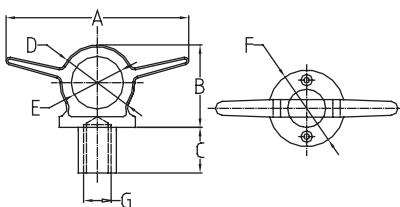


Lift Ring with Cleat



- 316 Stainless Steel Cast

PART NO.	A	B	C	D	E	F	G
6322S	5-15/16"	1-7/8"	7/8"	1-31/32"	1-1/8"	2-3/32"	5/8-11UNC
6324S	7"	2-15/32"	31/32"	2-1/2"	1-1/2"	2-17/32"	5/8-11UNC

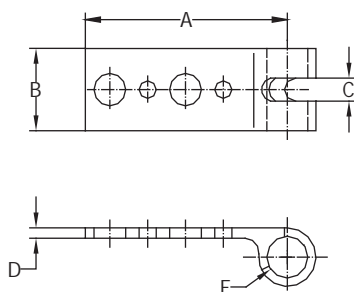


Sling



- 304 Stainless Steel Cast

PART NO.	A	B	C	D	E
6325S	4-7/16"	1-3/4"	23/32"	5/16"	1-1/4"

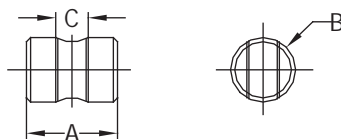


Cross Bar for Sling



- 304 Stainless Steel Machined

PART NO.	A	B	C
6325S-C	1-3/4"	1-1/4"	5/8-11UNC



Lift Rod Only



- 304 Stainless Steel Machined

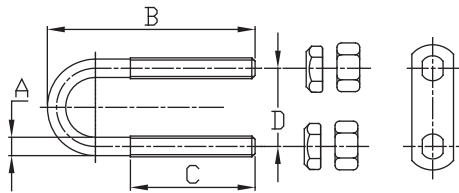
PART NO.	DESCRIPTION
6325S-R	SS 304 Rod for 6325S, Standard length: 12", 5/8-11UNC

Bow Eye



- 304 Stainless Steel Bent and Threaded

PART NO.	A	B	C	D	BOW PLATE
7846S-B	3/8"	3"	1-1/2"	1-1/2"	2
7848S-B	3/8"	3-3/4"	2-1/4"	1-1/2"	2
7850S-B	3/8"	4-1/2"	3"	1-1/2"	2
7852S-B	1/2"	5-1/4"	3-1/2"	1-7/8"	2
7863S-B	1/2"	4-1/2"	2-3/4"	1-7/8"	2
7864S-B	1/2"	4-3/4"	3"	1-7/8"	2
7854S-B	1/2"	5-7/8"	3-7/8"	1-7/8"	2
7856S-B	1/2"	6-1/2"	4-3/8"	1-7/8"	2
7858S-B	1/2"	7"	5-1/4"	1-7/8"	2

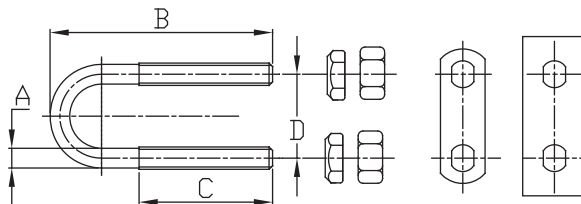


Stern Eye



- 304 Stainless Steel Bent and Threaded

PART NO.	A	B	C	D	BOW PLATE	STERN PLATE
7848S-S	3/8"	3-3/4"	2-1/4"	1-1/2"	1	1
7850S-S	3/8"	4-1/2"	3"	1-1/2"	1	1
7852S-S	1/2"	5-1/4"	3-1/2"	1-7/8"	1	1
7861S-S	1/2"	3-3/4"	2"	1-7/8"	1	1
7864S-S	1/2"	4-3/4"	3"	1-7/8"	1	1
7867S-S	5/8"	8"	5-1/2"	2"	1	1

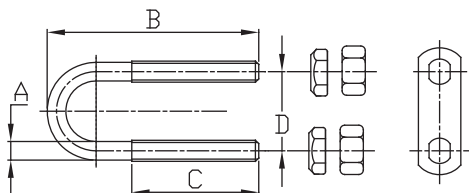


Long Shank Bow Eye



- 304 Stainless Steel Bent and Threaded

PART NO.	A	B	C	D	BOW PLATE
7859S-BL	3/8"	6"	3"	1-1/2"	2
7866S-BL	1/2"	6-1/2"	3-1/2"	1-7/8"	2

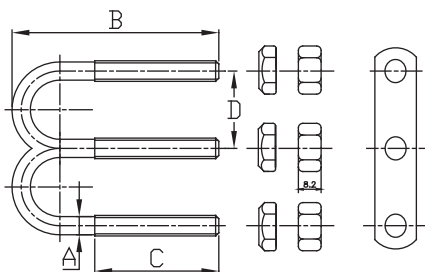


Double Shank Bow Eye



- 304 Stainless Steel Bent and Threaded

PART NO.	A	B	C	D	BOW PLATE
7848S-D	3/8"	3-3/4"	2-1/4"	1-3/8"	2



Spring Washers



- 304 Stainless Steel

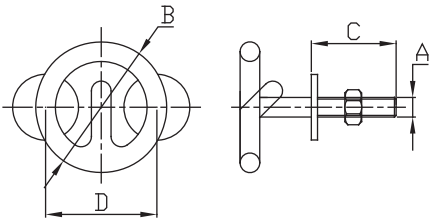
PART NO.	DESCRIPTION
7850S-SW	Optional spring washer for all 3/8" bow/stern eye
7852S-SW	Optional spring washer for all 1/2" bow/stern eye

304 Stainless Steel Transom Mount Ski Tow

- 304 Stainless Steel Bent and Threaded



PART NO.	A	B	C	D
7767S	3/8"	2-1/2"	1-1/2"	2-1/8"
7767SPE	3/8"	2-1/2"	To Be Welded On Tubing	2-1/8"
7768S	3/8"	2-1/2"	2"	2-1/8"
7769S	3/8"	3"	2"	2-5/8"
7772S	1/2"	3-1/2"	3-1/2"	3"

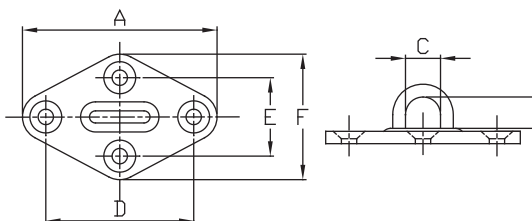


Diamond Pad Eyes



- 304 Stainless Steel Stamped

PART NO.	A	B	C	D	E	F
02321S	2-5/16"	1/2"	7/16"	1-13/16"	1-15/16"	1-7/16"
02322S	2-3/8"	9/16"	1"	2"	1"	1-9/16"
02323S	3-1/8"	11/16"	7/8"	2-1/2"	1-3/16"	2"

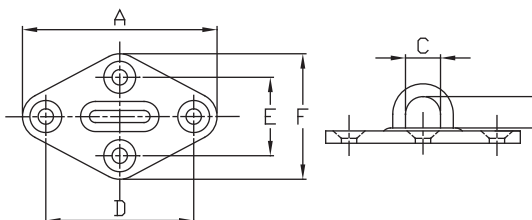


Diamond Pad Eyes



- 316 Stainless Steel Cast

PART NO.	A	B	C	D	E	F
6330S	3-1/8"	7/16"	3/4"	2-3/8"	1-1/4"	2"
6332S	3-1/2"	1/2"	7/8"	2-5/8"	1-3/8"	2-3/16"
6334S	4"	5/8"	1"	3-1/16"	1-19/32"	2-3/8"

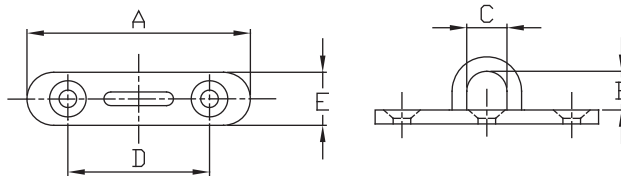


Oblong Pad Eyes



- 304 Stainless Steel Stamped

PART NO.	A	B	C	D	E
02341S	1-3/4"	1/2"	11/16"	1-1/4"	9/16"
02342S	2-3/8"	9/16"	15/16"	1-3/4"	13/16"
02343S	3-1/8"	11/16"	1-3/16"	1-3/8"	1"

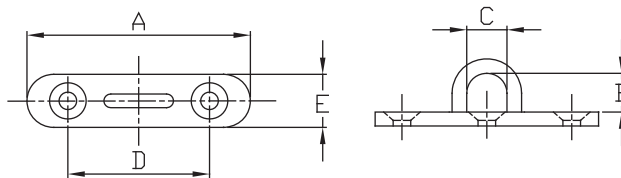


Oblong Pad Eyes



- 316 Stainless Steel Cast

PART NO.	A	B	C	D	E
6340S	2-15/16"	1/2"	5/8"	2-3/16"	7/8"
6342S	3-1/2"	5/8"	3/4"	2-5/8"	1-1/4"
6344S	4"	3/4"	7/8"	3"	1-3/8"

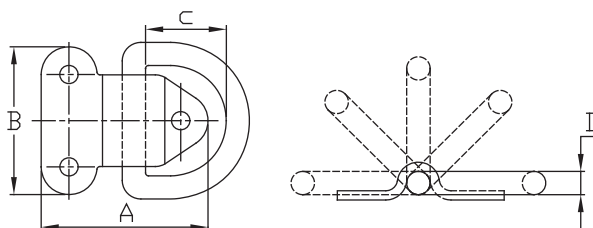


Folding Pad Eyes



- 304 Stainless Steel Stamped

PART NO.	A	B	C	D
02926S	2-5/16"	2"	15/16"	1/8"
02927S	2-5/16"	2"	1"	1/8"

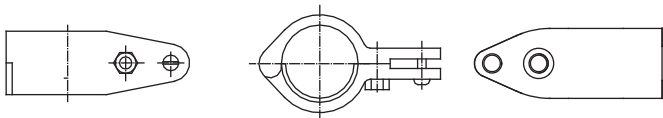


316 Stainless Steel Take-Apart Jaw Slide



- 316 Stainless Steel Cast

PART NO.	FOR RAIL	W/PLATE, FOR RAIL	PLATE THICKNESS
6800S	1"	7/8"	1/16"
6802S	1-1/4"	1-1/8"	1/16"

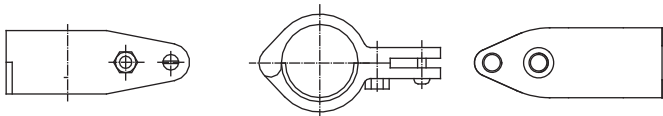


316 Stainless Steel Hinge Jaw Slide



- 316 Stainless Steel Cast

PART NO.	FOR RAIL	W/PLATE, FOR RAIL	PLATE THICKNESS
6802SH	1-1/4"	1-1/8"	1/16"
6804SH	1-1/2"	1-3/8"	3/32"

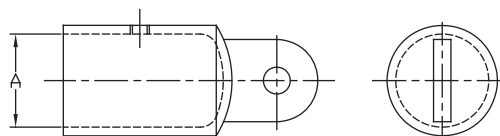


316 Stainless Steel Top Cap



- 316 Stainless Steel Cast

PART NO.	DESCRIPTION	SET SCREW	A
6810S	Top cap	One	7/8"
6811S	Top cap	One	1"



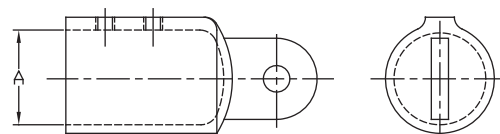
316 Stainless Steel Heavy Duty Top Cap



6810SEU

- 316 Stainless Steel Cast

PART NO.	DESCRIPTION	SET SCREW	A
6810SEU	Top cap	Two	7/8"
6811SEU	Top cap	Two	1"

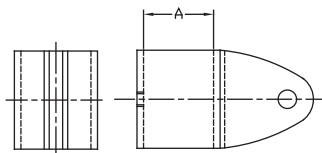


316 Stainless Steel Jaw Slide



- 316 Stainless Steel Cast

PART NO.	DESCRIPTION	SET SCREW	A
6815S	Jaw slide w/bolt	One	7/8"
6816S	Jaw slide w/bolt	One	1"



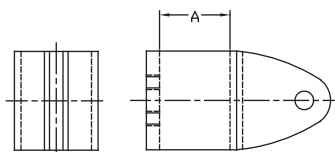
316 Stainless Steel Heavy Duty Jaw Slide



6816SEU

- 316 Stainless Steel Cast

PART NO.	DESCRIPTION	SET SCREW	A
6815SEU	Jaw slide w/bolt	Two	7/8"
6816SEU	Jaw slide w/bolt	Two	1"

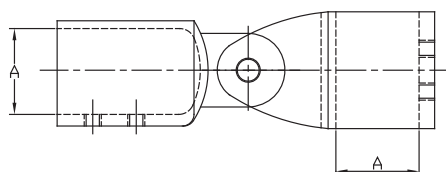


316 Stainless Steel Top Cap with Jaw Slide Unit



- 316 Stainless Steel Cast

PART NO.	DESCRIPTION	A
6813SEU	Top cap w/jaw slide	7/8"
6817SEU	Top cap w/jaw slide	1"

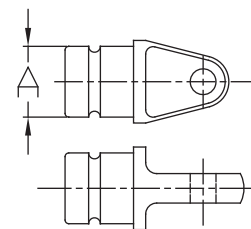


316 Stainless Steel Top Insert



- 316 Stainless Steel Cast

PART NO.	DESCRIPTION	A
6820S	Top insert	3/4"
6821S	Top insert	7/8"
6822S	Top insert	1"

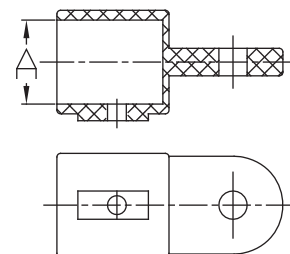


Nylon Top Cap



- Nylon Injection Molded

PART NO.	DESCRIPTION	A
58700B	Black top cap	3/4"
58701B	Black top cap	7/8"

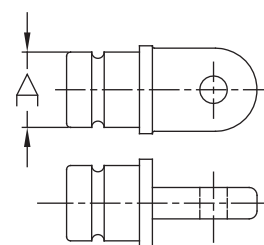


Nylon Top Insert



- Nylon Injection Molded

PART NO.	DESCRIPTION	A
58703B	Black top insert	3/4"
58704B	Black top insert	7/8"

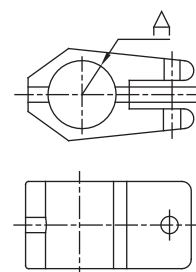


Nylon Jaw Slide



- Nylon Injection Molded

PART NO.	DESCRIPTION	A
58706B	Black jaw slide	3/4"
58707B	Black jaw slide	7/8"

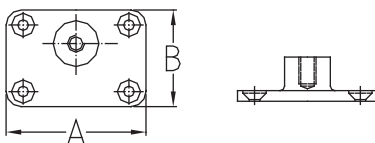


Heavy Duty Side Mount Deck Hinge

- 316 Stainless Steel Cast



PART NO.	A	B	PIN SIZE
6825S	2-13/16"	1-7/8"	1/4"

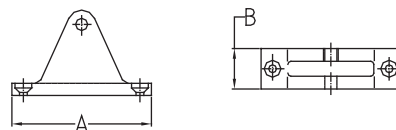


Deck Hinge 90°

- 316 Stainless Steel Cast



PART NO.	A	B	PIN SIZE
6828S	2-1/4"	3/4"	1/4"

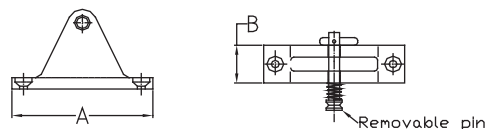


Deck Hinge with Removable Pin 90°

- 316 Stainless Steel Cast



PART NO.	A	B	PIN SIZE
6830S	2-1/4"	3/4"	1/4"
6830S-PIN	Removable pin only		

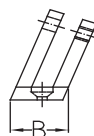
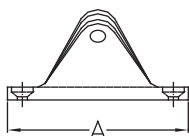


Angle Base Deck Hinge 80°

- 316 Stainless Steel Cast



PART NO.	A	B	PIN SIZE
6832S	2-1/4"	3/4"	1/4"

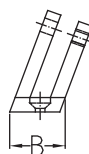
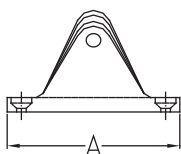


Angle Base Deck Hinge 80° with Removable Pin

- 316 Stainless Steel Cast



PART NO.	A	B	PIN SIZE
6834S	2-1/4"	3/4"	1/4"

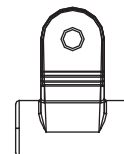
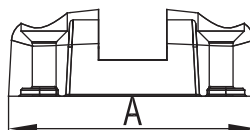
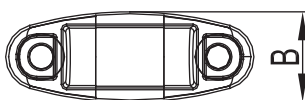


Adjustable Deck Hinge with Rubber Block

- 316 Stainless Steel Cast



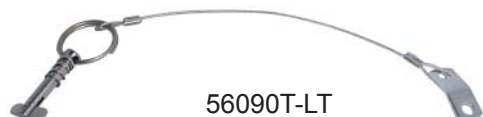
PART NO.	A	B	PIN SIZE
6839S	2-3/4"	1"	1/4"



Toggle Pin with Lanyard



56090T



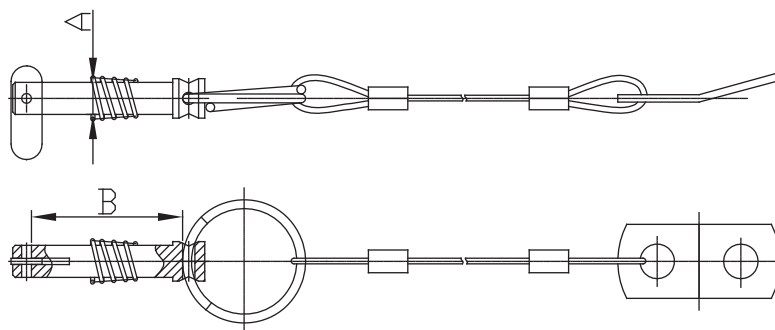
56090T-LT



56090T-LE

- 304 Stainless Steel Machined

PART NO.	DESCRIPTION	A	B
56090T	Toggle pin only	1/4"	3/4"
56090T-LT	Pin with 6" lanyard TAB	1/4"	3/4"
56090T-LE	Pin with 6" lanyard EYE	1/4"	3/4"

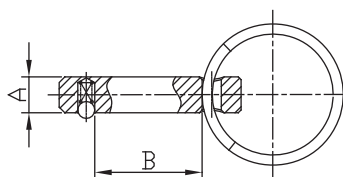


Quick Release Pin



- 304 Stainless Steel Machined

PART NO.	DESCRIPTION	A	B
56093P	Quick release pin only	1/4"	3/4"
56094P	Quick release pin only	1/4"	7/8"
56095P	Quick release pin only	1/4"	1"



Lanyard with Eye and Tab

- 304 Stainless Steel Machined

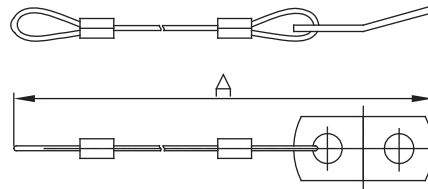
PART NO.	DESCRIPTION	A
56097T	6" nylon coated lanyard w/TAB	6"
56097E	6" nylon coated lanyard	6"



56097T



56097E



Black Knob Set Screw Shaft

- 304 Stainless Steel Machined

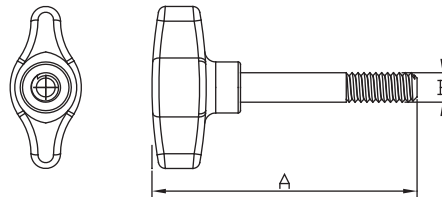
PART NO.	DESCRIPTION	A	B
56098R	Round knob	15/16"	1/4" - 20
56098W	Wing nut knob	1-3/8"	1/4" - 20



56098R



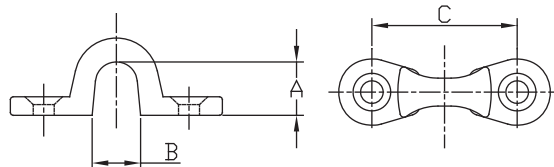
56098W



304 Stainless Steel Eye Straps

- 304 Stainless Steel Machined

PART NO.	A	B	C
56105S	1/2"	5/8"	1-9/16"
56105SPE	7/16"	13/16"	1-6/16"



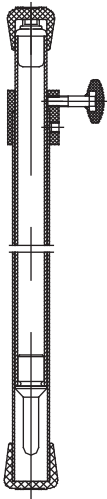
Boat Cover Support Poles

- Aluminum Extrusion
- 3-In-1 Telescoping Pole For Quick And Easy Boat Cover Support
- Prolong The Life Of Your Boat Cover By Preventing Water Pockets
- Turning Knobs That Allow You To Adjust And Lock To The Desired Height



3-in-1 Adjustable

PART NO.	DIMENSION
56110AP	Adjusts from 28" to 55"
56111AP	Adjusts from 40" to 70"



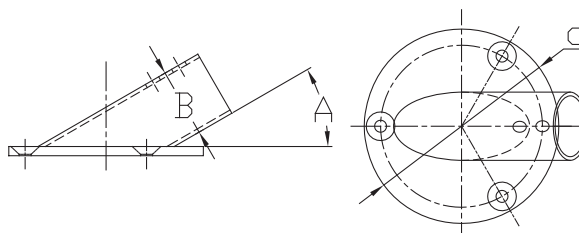
Round Rail Base



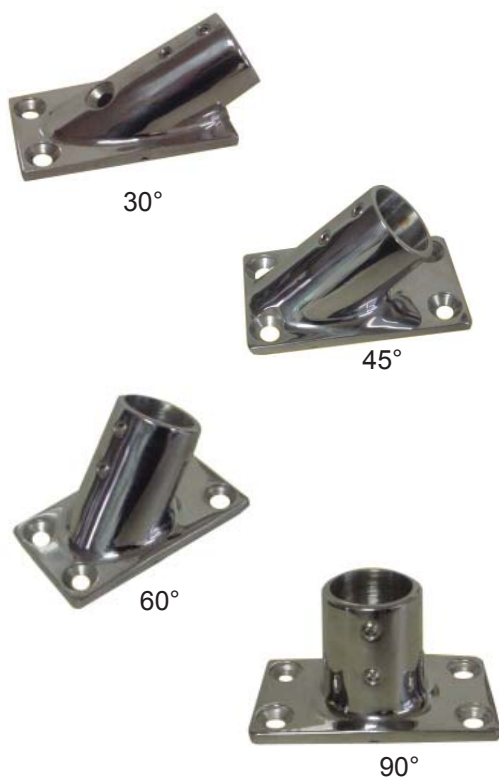
- 316 Stainless Steel Cast

PART NO.	ANGLE	B	C
6840S	30°	7/8"	2-1/2"
6841S	45°	7/8"	2-1/2"
6842S	60°	7/8"	2-1/2"
6843S	90°	7/8"	2-1/2"

PART NO.	ANGLE	B	C
6845S	30°	1"	2-3/4"
6846S	45°	1"	2-3/4"
6847S	60°	1"	2-3/4"
6848S	90°	1"	2-3/4"



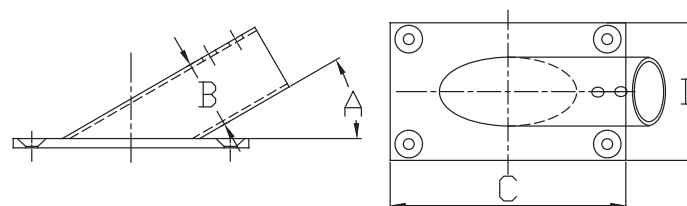
Rectangular Rail Base



- 316 Stainless Steel Cast

PART NO.	ANGLE	B	C	D
6850S	30°	7/8"	3"	1-3/4"
6851S	45°	7/8"	3"	1-3/4"
6852S	60°	7/8"	3"	1-3/4"
6853S	90°	7/8"	3"	1-3/4"

PART NO.	ANGLE	B	C	D
6855S	30°	1"	3-1/2"	1-7/8"
6856S	45°	1"	3-1/2"	1-7/8"
6857S	60°	1"	3-1/2"	1-7/8"
6858S	90°	1"	3-1/2"	1-7/8"
6859S	90°	1-1/4"	3-1/4"	1-7/8"

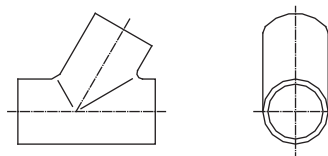


Handrail Tee Angled



- 316 Stainless Steel Cast

PART NO.	ANGLE	TUBE O.D.
6870S	60°	7/8"
6871S	60°	1"

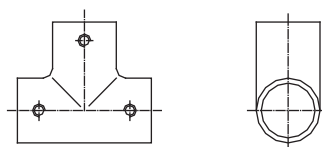


Handrail Tee



- 316 Stainless Steel Cast

PART NO.	ANGLE	TUBE O.D.
6872S	90°	7/8"
6873S	90°	1"

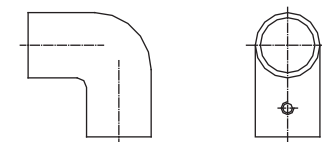


2-Way Handrail Elbow



- 316 Stainless Steel Cast

PART NO.	ANGLE	TUBE O.D.
6876S	90°	7/8"
6877S	90°	1"

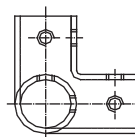
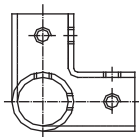


3-Way Handrail Elbow



- 316 Stainless Steel Cast

PART NO.	ANGLE	TUBE O.D.
6878S	90°	7/8"
6879S	90°	1"

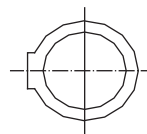
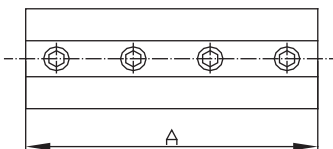


Heavy Duty Tube Connector



- 316 Stainless Steel Cast

PART NO.	A	TUBE O.D.
6895S	3"	7/8"
6896S	3"	1"



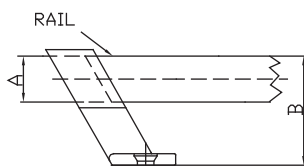
Stainless Steel 316 Rail Stanchions

- 316 Stainless Steel Cast
- Uses 1/4"-28 set screw for rail installation.
- Each base is pre-drilled with two countersunk holes for #10 screws
- Port-side Stanchions (-P) have set screws on the left side of bushing
- Starboard Stanchions (-S) have set screws on the right side of bushing



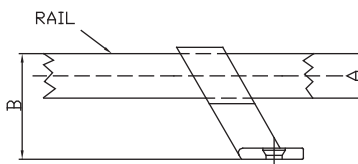
6862S

PART NO.	ANGLE	POSITION	SET SCREWS	A	B
6862S	120°	Forward	X	7/8"	1-13/16"
6867S	120°	Forward	X	1"	2-3/16"



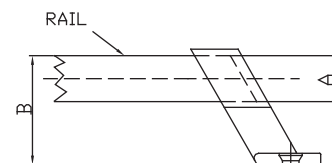
6861S-P

PART NO.	ANGLE	POSITION	SET SCREWS	A	B
6861S	60°	Center	X	7/8"	1-13/16"
6861S-P	60°	Center	Left Hand	7/8"	1-13/16"
6861S-S	60°	Center	Right Hand	7/8"	1-13/16"
6866S	60°	Center	X	1"	2-3/16"



6860S-P

PART NO.	ANGLE	POSITION	SET SCREWS	A	B
6860S	60°	Aft	X	7/8"	1-13/16"
6860S-P	60°	Aft	Left Hand	7/8"	1-13/16"
6860S-S	60°	Aft	Right Hand	7/8"	1-13/16"
6865S	60°	Aft	X	1"	2-3/16"

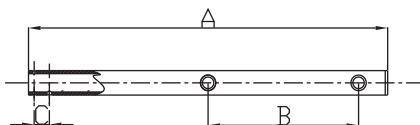


Cylindrical Tip Stanchion



- 304 Stainless Steel Tubing
- Stainless Steel Tube 1" O.D.
- With double lifeline holes

PART NO.	A	B	C
6015S	23-1/2"	11-3/32"	1"

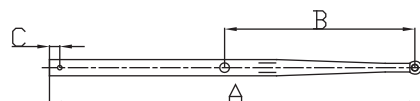


Tapered Tip Stanchion



- 304 Stainless Steel Tubing
- Stainless Steel Tube 1" O.D.
- With double lifeline holes

PART NO.	A	B	C
6016S	24"	12-11/32"	21/32"

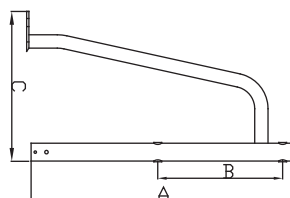


Gate Stanchion



- 304 Stainless Steel Tubing
- Stainless Steel Tube 1" O.D.
- With double lifeline holes

PART NO.	A	B	C	RAIL SIDE
6017SR	24"	11-3/32"	13-1/2"	Right
6017SL	24"	11-3/32"	13-1/2"	Left

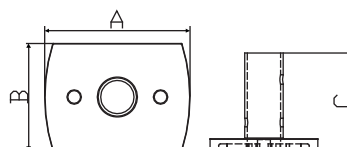


Cast Stanchion Base



- 316 Stainless Steel Cast
- Stainless Steel Base for 6015S, 6017SR, 6017SL

PART NO.	A	B	C
6018S	3-11/32"	2-1/2"	2-1/4"

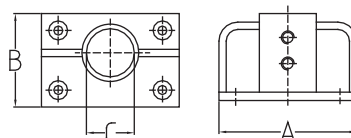


Cast Stanchion Base



- 316 Stainless Steel Cast
- Stainless Steel Base for all the stanchions with 1" O.D. tube
- Square deck plate, double bailed

PART NO.	A	B	C
6020S	3-7/16"	3"	1"

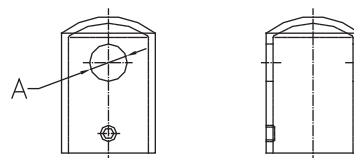


Heavy Duty Stanchion Cap



- 316 Stainless Steel Cast

PART NO.	A	TUBE O.D.
6897S	5/16"	1"

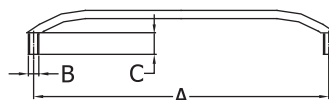


Oval Grab Rail

- 304 Stainless Steel Tubing
- 1" x 3/4" Tube



PART NO.	A	B	C	DEGREE
7870S	12"	5/16"-18 x 2"	1-7/8"	35°
7872S	17-1/4"	5/16"-18 x 2"	1-7/8"	35°
7873S	18"	5/16"-18 x 2"	1-7/8"	35°
7875S	24"	5/16"-18 x 2"	1-7/8"	35°
7878S	36"	5/16"-18 x 2"	1-7/8"	35°

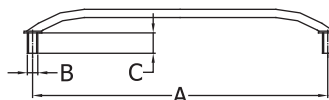


Angled Grab Rail

- 304 Stainless Steel Tubing
- 7/8" Tube



PART NO.	A	B	C	DEGREE
7882S	8"	5/16"-18 x 1-1/2"	1-3/8"	45°
7884S	11"	5/16"-18 x 1-1/2"	1-3/8"	45°
7886S	13"	5/16"-18 x 1-1/2"	1-3/8"	45°
7888S	17"	5/16"-18 x 1-1/2"	1-3/8"	45°

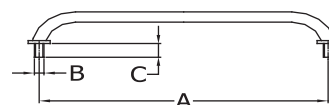


Round Grab Rail

- 304 Stainless Steel Tubing
- 1" Tube



PART NO.	A	B	C
7892S	14"	3/8" - 16	1-3/8"
7892SPE	Same As 7892S with threaded flange / no stud		
7895S	24"	3/8" - 16	1-3/8"
7895SPE	Same As 7895S with threaded flange / no stud		
7899S	34"	3/8" - 16	1-3/8"
7899SPE	Same As 7899S with threaded flange / no stud		

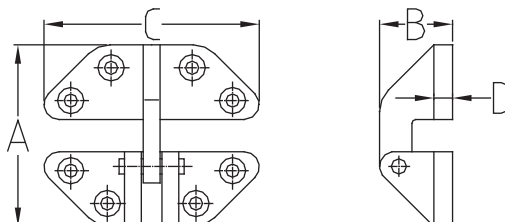


Hatch Hinge



- 316 Stainless Steel Cast
- Quick-release pin for easy separation

PART NO.	A	B	C	D	FASTENER
6080S	2-5/8"	1-5/32"	2-7/8"	1/4"	#10

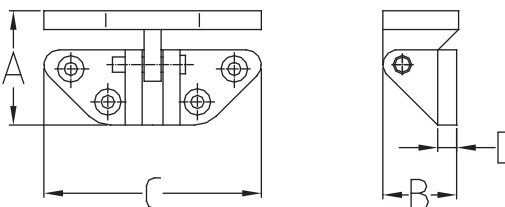


Angle Base Hatch Hinge



- 316 Stainless Steel Cast
- Quick-release pin for easy separation

PART NO.	A	B	C	D	FASTENER
6082S	1-5/8"	1-5/32"	2-7/8"	1/4"	#10



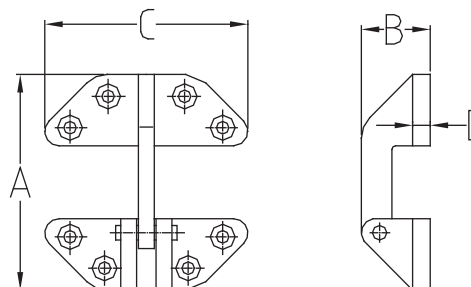
Long Reach Hatch Hinge



- 316 Stainless Steel Cast

PART NO.	A	B	C	D	FASTENER
6084S	3-5/8"	1-5/32"	2-7/8"	1/4"	#10
6084SPE	3-5/8"	1-5/32"	2-7/8"	1/4"	#10

The groove of 6084SPE is 3/32" wider than 6084S to accommodate
for powder coating thickness.

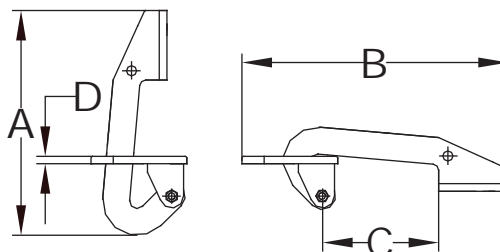


Hidden Style Engine Lid Hinge

- 316 Stainless Steel Cast



PART NO.	A	B	C	D	FASTENER
6086S	7-3/8"	8-5/8"	3-7/8"	1/4"	#10

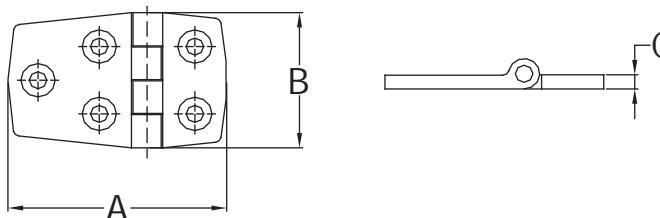


Cast Short Side Door Hinge

- 316 Stainless Steel Cast



PART NO.	A	B	C	FASTENER
6104S	2-3/8"	1-1/2"	3/16"	#10
6106S	2-7/8"	1-1/2"	3/16"	#10

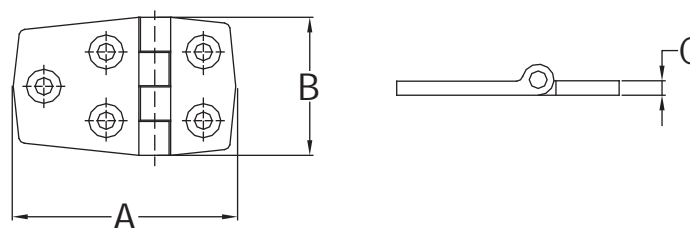


Stamped Short Side Door Hinge

- 304 Stainless Steel Stamped



PART NO.	A	B	C	FASTENER
7722ES	2-1/4"	1-7/16"	1/16"	#8

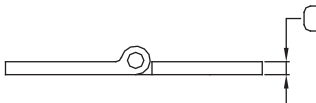
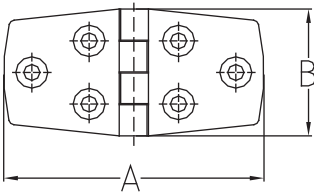


Cast Door Hinge



- 316 Stainless Steel Cast

PART NO.	A	B	C	FASTENER
6108S	3"	1-1/2"	3/16"	#10
6110S	4-1/8"	1-1/2"	3/16"	#10

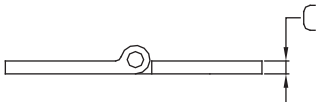
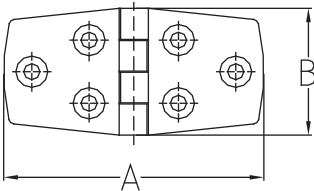


Stamped Door Hinge



- 304 Stainless Steel Stamped

PART NO.	A	B	C	FASTENER
7719ES	3"	1-7/16"	1/16"	#8

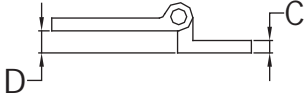
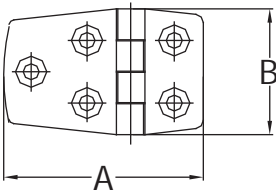


Offset Hinge



- 316 Stainless Steel Cast

PART NO.	A	B	C	D	FASTENER
6100S	2-1/8"	1-1/2"	3/16"	3/8"	#10

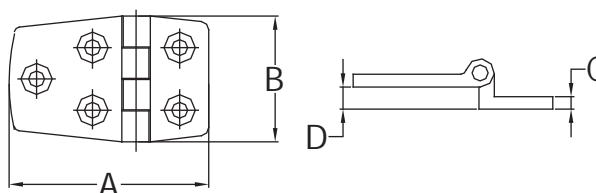


Stamped Offset Hinge

- 304 Stainless Steel Stamped



PART NO.	A	B	C	D	FASTENER
7723ES	2-5/8"	1-7/16"	1/16"	3/4"	#8
7724ES	2-5/8"	1-7/16"	1/16"	5/8"	#8
7725ES	2-5/8"	1-7/16"	1/16"	1/2"	#8

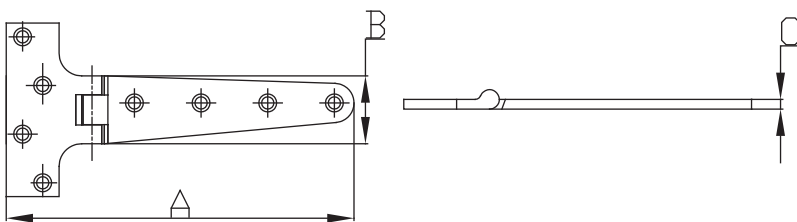


T-Hinge

- 316 Stainless Steel Cast



PART NO.	A	B	C	FASTENER
6126S	7-3/4"	3-7/8"	7/32"	#10

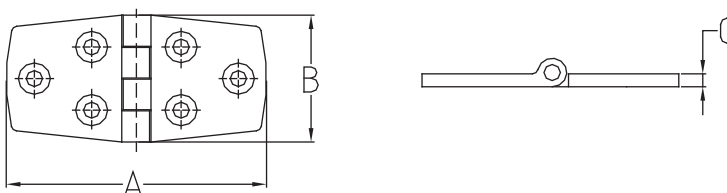


Locker Hinge

- 304 Stainless Steel Stamped



PART NO.	A	B	C	FASTENER
7731ES	6"	3"	1/16"	#8

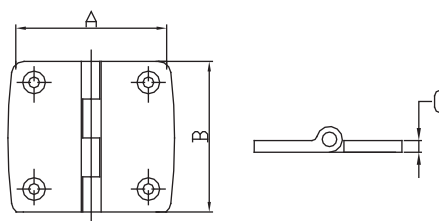


Butt Hinge

- 316 Stainless Steel Cast



PART NO.	A	B	C	FASTENER
6114S	1-1/2"	1-1/2"	3/16"	#10
6116S	2"	2"	3/16"	#10

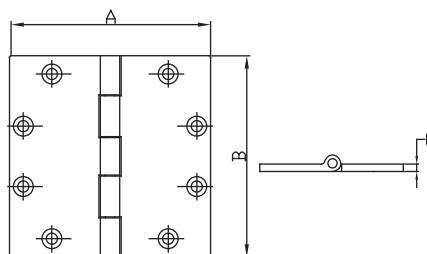


Large Butt Hinge

- 316 Stainless Steel Cast



PART NO.	A	B	C	FASTENER
6117S	4"	4"	5/32"	#12
6118S	5"	5"	5/32"	#12

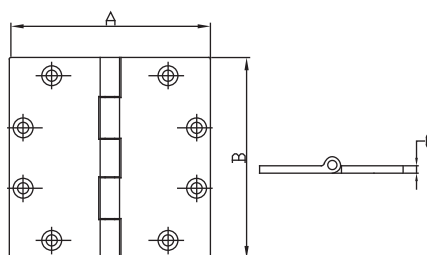


Flush Mount Butt Hinge

- 316 Stainless Steel Cast



PART NO.	A	B	C	FASTENER
6117SR	4"	4"	5/32"	#12
6118SR	5"	5"	5/32"	#12

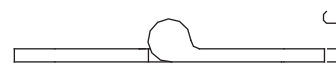
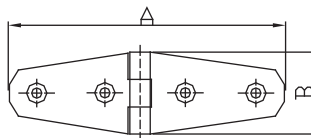


Strap Hinge

- 316 Stainless Steel Cast



PART NO.	A	B	C	FASTENER
6120S	4-1/16"	1-1/16"	3/16"	#10 (4)
6121S	5-1/4"	1-1/16"	3/16"	#10 (5)
6122S	6-1/4"	1-1/16"	3/16"	#10 (6)

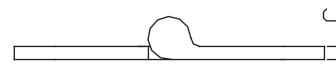
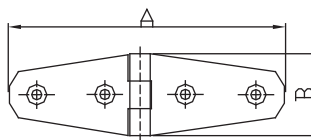


Strap Hinge

- 304 Stainless Steel Stamped



PART NO.	A	B	C	FASTENER
7728ES	5-5/8"	1-1/2"	1/16"	#8
7729ES	4"	1-3/32"	1/16"	#8

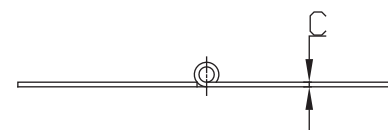
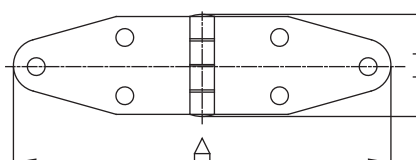


Strap Hinge

- 304 Stainless Steel Stamped



PART NO.	A	B	C	FASTENER
7727ES	7-1/8"	1-5/8"	1/16"	#8



Flush Mount Strap Hinge

- 304 Stainless Steel Stamped

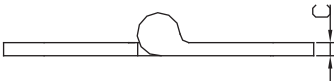
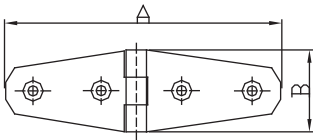


7721ES



7726ES/7732ES

PART NO.	A	B	C	FASTENER
7721ES	5-5/8"	1-1/2"	1/16"	#8
7726ES	7-1/8"	1-5/8"	1/16"	#8
7732ES	7"	1-1/2"	1/16"	#8

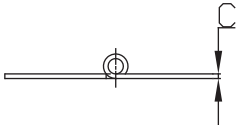
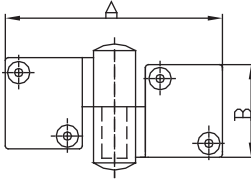
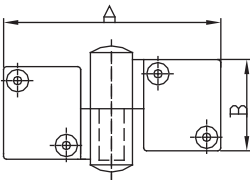


Take Apart Hinge

- 316 Stainless Steel Cast



PART NO.	A	B	C	FASTENER	DOOR
6112SR	3-9/16"	2"	7/32"	#10	Right
6112SL	3-9/16"	2"	7/32"	#10	Left

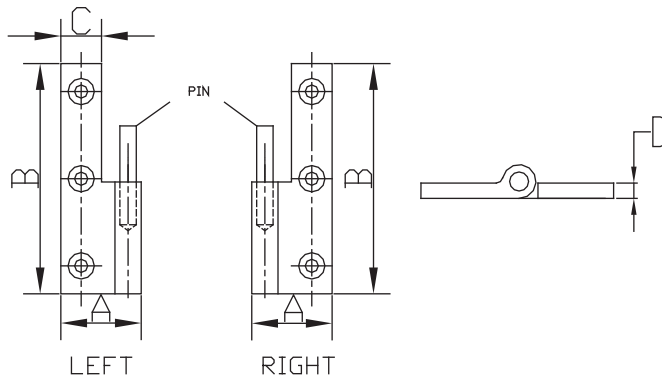


Take Apart Hinge

- 316 Stainless Steel Cast
- Teflon Washers



PART NO.	A	B	C	D	FASTENER	DOOR
2030HS-R	1"	1-1/2"	1/2"	3/32"	#8	Right
2030HS-L	1"	1-1/2"	1/2"	3/32"	#8	Left
2034HS-R	1"	2-3/4"	1/2"	3/32"	#8	Right
2034HS-L	1"	2-3/4"	1/2"	3/32"	#8	Left

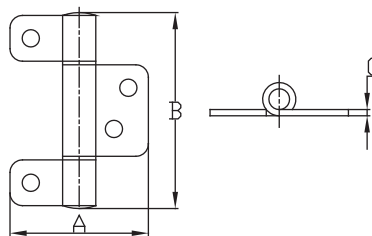


Bi-Fold Door Hinge

- 304 Stainless Steel Stamped



PART NO.	A	B	C	FASTENER
07435ES	3-7/16"	2"	1/16"	#6

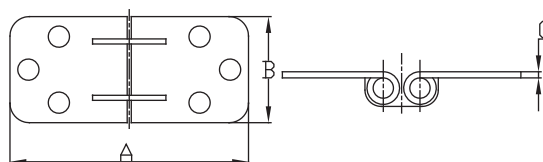


Flush Mount Double Pin Hinge

- 304 Stainless Steel Stamped



PART NO.	A	B	C	FASTENER
7712ES	2-13/16"	1-9/16"	1/16"	#8

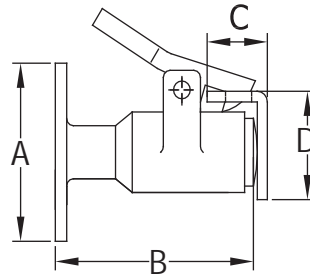


Cushioned Door Holder

- 316 Stainless Steel Cast



PART NO.	A	B	C	D
2400SS	2"	2-1/2"	1-7/8"	7/8"

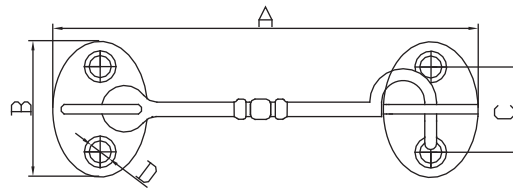


Brass Door Hook

- Brass Cast



PART NO.	A	B	C	D
2088B	2-1/4"	1-1/8"	3/4"	#6

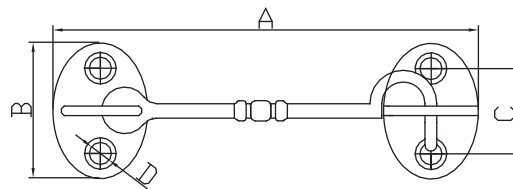


Chrome-Plated Brass Door Hook

- Chrome-Plated Brass Cast



PART NO.	A	B	C	D
8124BC	2-1/4"	1-1/8"	3/4"	#6

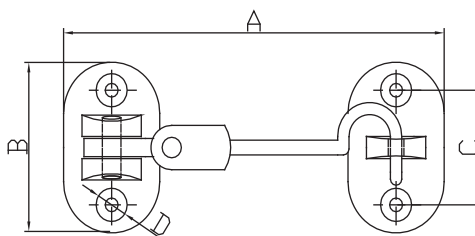


Gooseneck Cabin Door Hook

- 316 Stainless Steel Cast



PART NO.	A	B	C	D
2600S	4"	1-5/8"	1"	#8

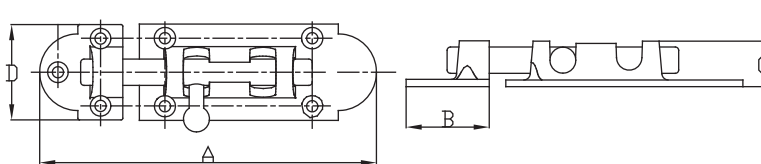


Cast Heavy Duty Barrel Bolt

- 316 Stainless Steel Cast



PART NO.	A	B	C	D
6599S	4-1/4"	1-3/8"	5/8"	1-1/2"

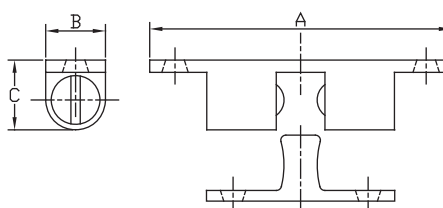


Brass Cabinet Catch

- Brass Cast
- 304 Stainless Steel Ball Spring



PART NO.	A	B	C
2100B	2-1/4"	7/16"	1/2"

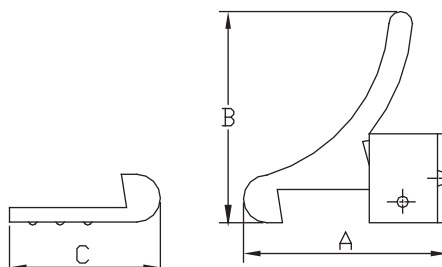


Brass Elbow Catch

- Brass Cast



PART NO.	A	B	C
2072B	1-3/16"	1-1/8"	3/4"

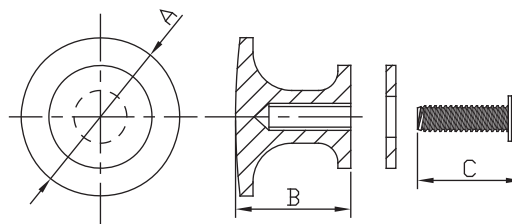


Drawer Knob

- 304 Stainless Steel Stamped



PART NO.	A	B	C
7100-01-DK	7/8"	5/8"	1"

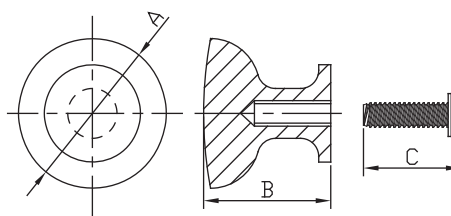


Brass Drawer Knob

- Brass Cast



PART NO.	A	B	C
4022B	1"	13/16"	1-1/16"

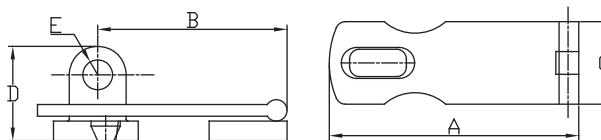


Swivel Hasp



- 316 Stainless Steel Cast

PART NO.	A	B	C	D	E
6500S	3"	2-1/4"	1"	1-1/8"	3/8"

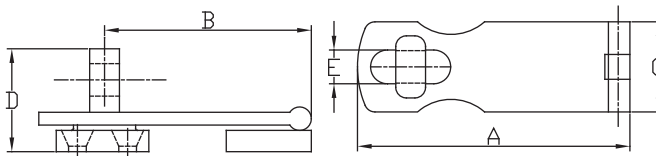


Swivel Hasp



- 304 Stainless Steel Stamped

PART NO.	A	B	C	D	E
7750S	2-3/4"	1-7/8"	1"	7/8"	5/16"
7751S	3-3/4"	3"	1"	7/8"	5/16"

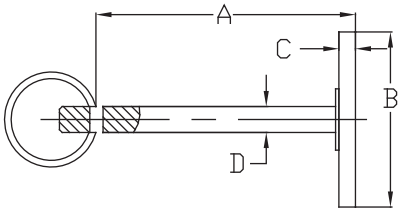


Hatch Cover Pull

- 304 Stainless Steel Stamped



PART NO.	A	B	C	D
01232SPE	1-15/16"	1-1/4"	1/8"	3/16"

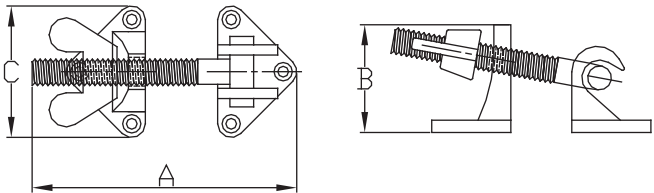


T-Bar Fastener

- Brass Cast

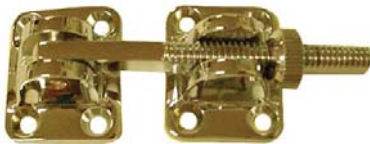


PART NO.	A	B	C
2062B	4"	1-1/4"	1-7/16"

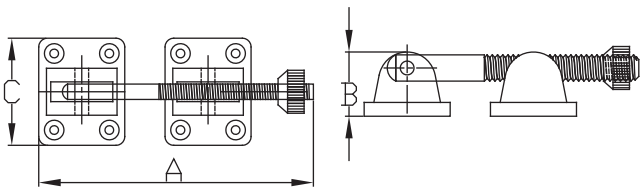


Knob Hatch Fastener

- Brass Cast



PART NO.	A	B	C
2064B	4"	7/8"	1-1/4"

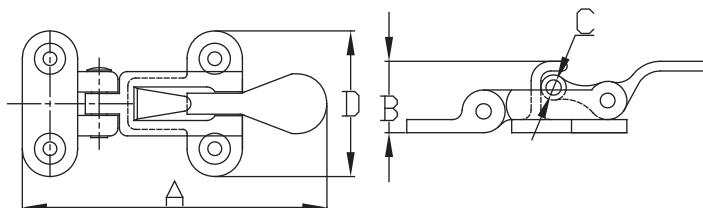


Anti-Rattle Fastener

- 316 Stainless Steel Cast



PART NO.	A	B	C	D
2066SS	3-15/16"	1-1/8"	3/8"	1-3/4"

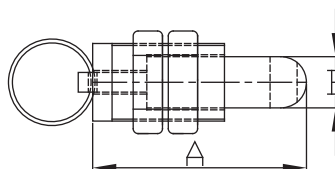


Hatch Lock Fastener

- 304 Stainless Steel Stamped



PART NO.	MATERIAL	A	B
8088BC	SS 304	2-1/4"	3/4"

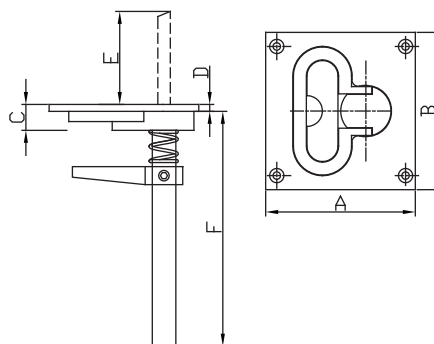


Turning Lock Lift Handle

- 316 Stainless Steel Cast



PART NO.	A	B	C	D	E	F	LOCK ADJ.
2051S	3"	3-3/4"	11/16"	1/8"	1-1/2"	5-1/4"	1-3/8" - 4-5/8"



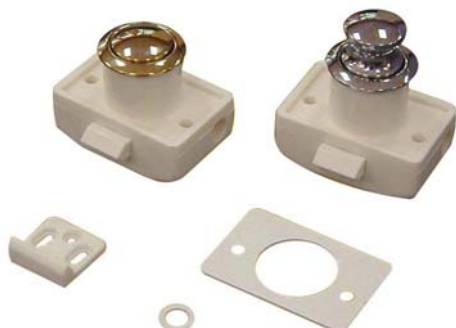
Push Button Cabinet Latch



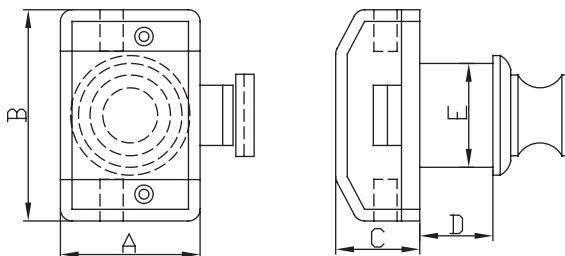
- Silver: Chrome-Plated Stainless Steel
- Gold: Titanium-Plated Stainless Steel
- Standard Door Thickness is 3/4" but can accommodate up to 1"

Recommendations:

- For 1/2" door thickness, use 4 plates (7100-08)
- For 5/8" door thickness, use 2 plates (7100-08)
- For 3/4" door thickness, don't use any spare pieces
- For 7/8" door thickness, use 2 rings (7100-07)
- For 1" door thickness, use 4 rings (7100-07)



PART NO.	KNOB COLOR	A	B	C	D	E	MAX DOOR THICKNESS
7100S	Silver	1-1/2"	2-1/4"	7/8"	3/4"	1-1/8"	1"
7100G	Gold	1-1/2"	2-1/4"	7/8"	3/4"	1-1/8"	1"
7100-07	Plastic Ring, Thickness 0.021"						
7100-08	Plastic Plate, Thickness 0.033"						

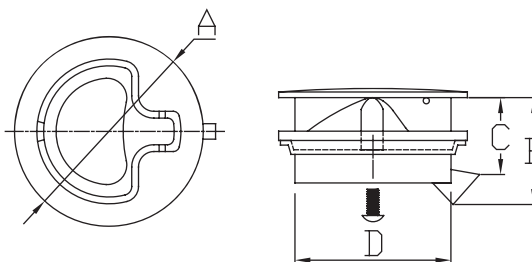


Slam Latch

- 316 Stainless Steel Cast



PART NO.	LOCKING	A	B	C	D	MAX DOOR THICKNESS
7118S	NO	1-3/4"	1-5/16"	1"	1-7/8"	3/4"
7119SLK	YES	1-3/4"	1-5/16"	1"	1-7/8"	3/4"
7112S	NO	2-3/8"	1-19/32"	1-3/32"	2-11/32"	7/8"
7113SLK	YES	2-3/8"	1-19/32"	1-3/32"	2-11/32"	7/8"

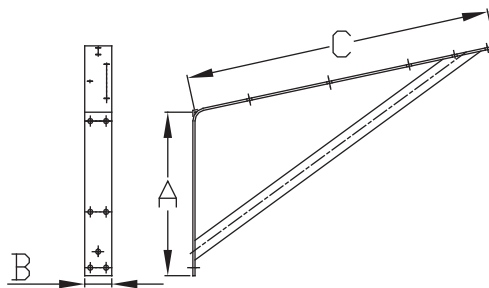


Swim Platform Mounting Bracket

- 304 Stainless Steel Stamped



PART NO.	A	B	C	TUBE	DEGREE
7990S	6"	1-1/2"	12"	7/8"	12°
7991S	6"	1-1/2"	12"	7/8"	16°
7992S	9"	1-1/2"	17"	7/8"	12°

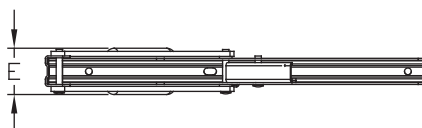
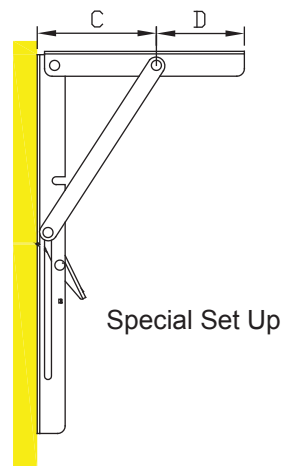
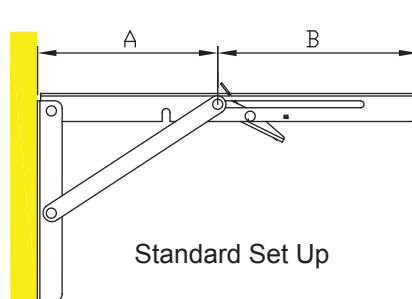


Folding Bracket

- 304 Stainless Steel Stamped
- Ideal for Chair Arms and Tables



PART NO.	A	B	C	D	E
7995S	5-1/2"	6-1/4"	3-1/2"	2-3/4"	1"

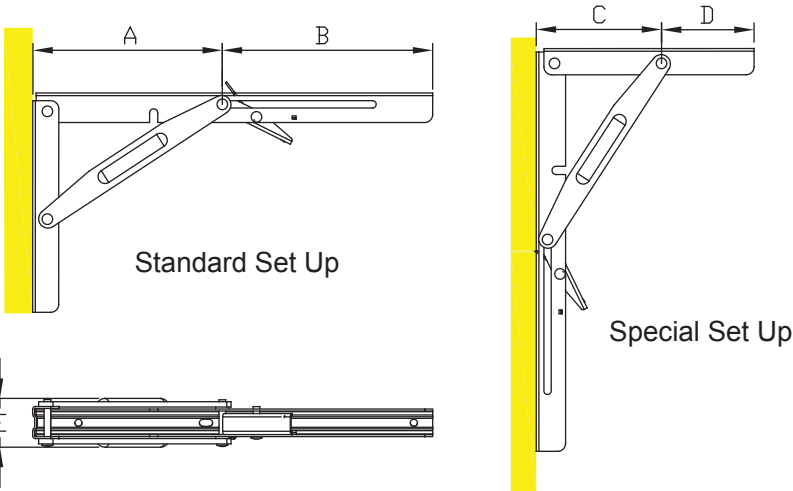


Heavy Duty Folding Bracket

- 304 Stainless Steel Stamped
- Ideal for Jump-seats and Fold-out Tables
- Supporting Arms Are Stronger Than 7995S



PART NO.	A	B	C	D	E
7996S	5-1/2"	6-1/4"	3-1/2"	2-3/4"	1"

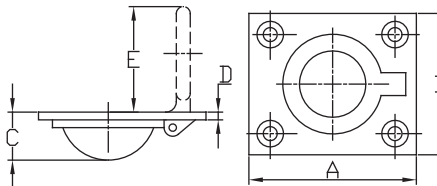


Ring Pull



- 316 Stainless Steel Cast

PART NO.	A	B	C	D	E
6090S	1-7/8"	1-1/2"	1/2"	3/16"	1"

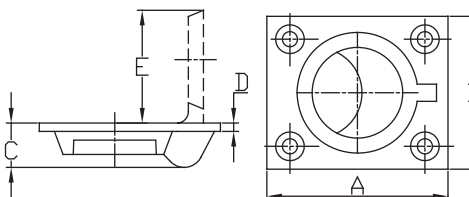


Ring Pull



- 304 Stainless Steel Stamped
- Ideal for Chair Arms and Tables

PART NO.	A	B	C	D	E
6090S-N	2-7/16"	1-3/4"	11/32"	1/8"	1-1/2"

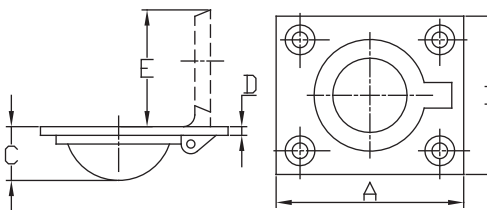


Ring Pull



- Brass Cast

PART NO.	A	B	C	D	E
2058B	1-3/4"	1-1/2"	1/2"	1/16"	1"
2060B	2-9/16"	2"	1/2"	1/16"	1-1/2"

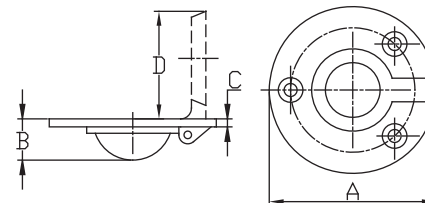


Round Ring Pull



- 316 Stainless Steel Cast

PART NO.	A	B	C	D
6092S	2"	1/2"	1/8"	1"

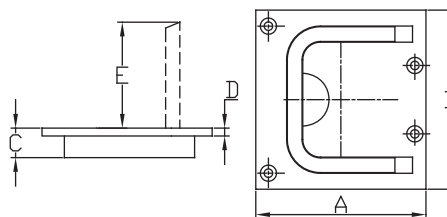


Lift Handle



- 316 Stainless Steel Cast

PART NO.	A	B	C	D	E
6094S	2-1/4"	3"	3/8"	1/8"	1-1/16"

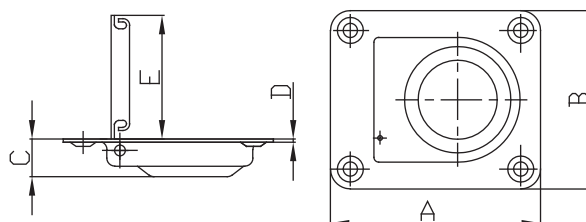


Spring Loaded Ring Pull



- 304 Stainless Steel Stamped

PART NO.	A	B	C	D	E
7740S	2-9/16"	2-3/16"	7/16"	1/32"	1-1/2"
7742S	1-3/4"	1-1/2"	7/16"	1/32"	1"

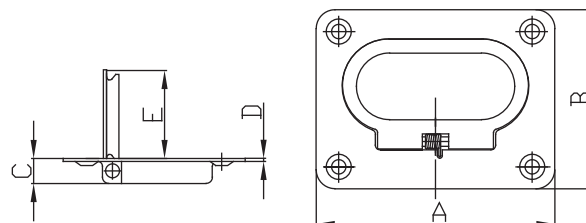


Spring Loaded Flush Lift Handle



- 304 Stainless Steel Stamped

PART NO.	A	B	C	D	E
7743S	3"	2-3/16"	5/16"	1/32"	1-1/8"

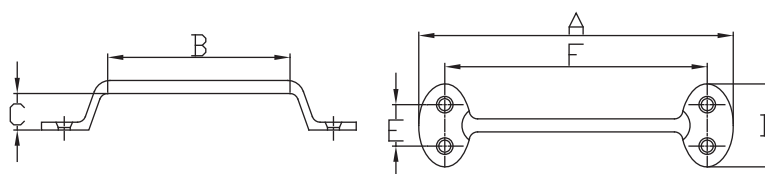


Grab Handle



- 316 Stainless Steel Cast

PART NO.	A	B	C	D	E	F
6539S	5-21/32"	2-7/8"	1-1/2"	1-21/32"	7/8"	4-13/16"

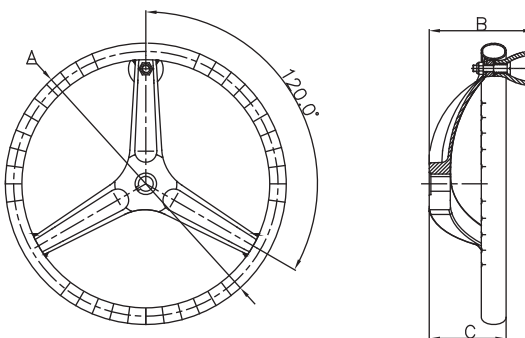


Heavy Duty Sport Wheel



- 316 Stainless Steel Cast Hub
- 304 Stainless Steel Tubing
- Fits 3/4" Tapered Shaft
- Wheel features finger grips and a control knob for easy maneuvering

PART NO.	A	B	C	REMARK
7319SRK	13-1/2"	5"	3-1/2"	Wheel without nut
7320SRK	15-1/2"	5"	3-1/2"	Wheel without nut
7327NT	5/8-18 Wheel Nut for Teleflex Hydraulic Steering System			
7328NT	1/2-20 Wheel Nut for Teleflex Mechanical Steering System			
7329NT	M12 Wheel Nut (M12*1.75)			

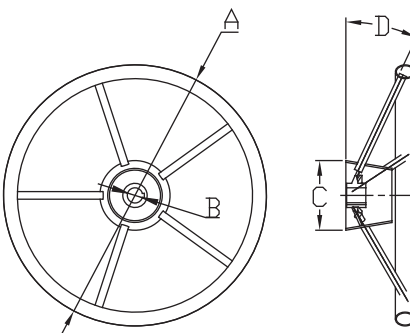


Heavy Duty Destroyer Wheel



- 316 Stainless Steel Cast Hub
- 304 Stainless Steel Tubing
- Fits 3/4" Tapered Shaft

PART NO.	A	B	C	D
7308	11"	3/4"	3-1/2"	25°
7403PC	13-1/2"	3/4"	3-1/2"	25°
7402PC	15-1/2"	3/4"	3-1/2"	25°
7402PC10	15-1/2"	3/4"	3-1/2"	10°
7401PC	18"	3/4"	3-1/2"	10°
7405PC	20"	3/4"	3-1/2"	10°
7400PC	22"	3/4"	3-1/2"	10°

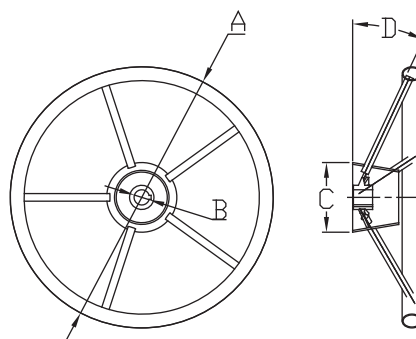


Economic Destroyer Wheel



- 316 Stainless Steel Cast Hub
- 304 Stainless Steel Tubing
- Fits 3/4" Tapered Shaft

PART NO.	A	B	C	D
7308PCA	11"	3/4"	3-1/2"	25°
7303PCA	13-1/2"	3/4"	3-1/2"	25°
7302PCA	15-1/2"	3/4"	3-1/2"	25°
7302PCA10	15-1/2"	3/4"	3-1/2"	10°
7605	20"	3/4"	3-1/2"	10°

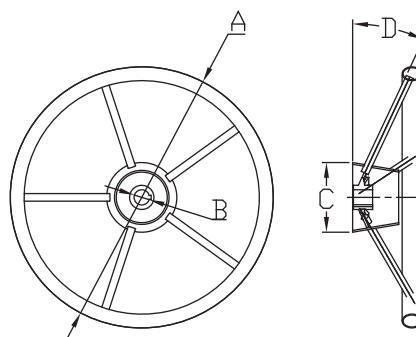


Destroyer Wheel with Foam Cover



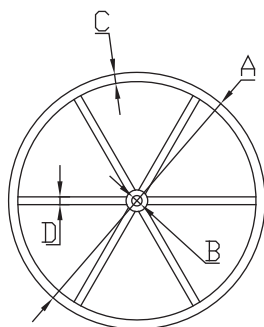
- 316 Stainless Steel Cast Hub
- 304 Stainless Steel Tubing
- Fits 3/4" Tapered Shaft

PART NO.	A	B	C	D	COLOR
7402BFC	15-1/2"	3/4"	2-13/16"	25°	Black
7403BFC	13-1/2"	3/4"	3-1/2"	25°	Black
7408BFC	11"	3/4"	3-1/2"	25°	Black



Sailboat Wheel

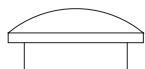
- 316 Stainless Steel Cast Hub
- 304 Stainless Steel Tubing
- Fits 1" Straight Shaft
- 1/4" Keyway



PART NO.	A	B	C	D
7549	22"	1"	7/8"	1/2"-6
7500	24"	1"	7/8"	1/2"-6
7501	26"	1"	7/8"	1/2"-6
7502	28"	1"	7/8"	1/2"-6
7503	30"	1"	7/8"	1/2"-6
7504	32"	1"	7/8"	1/2"-6
7505	34"	1"	7/8"	1/2"-6
7506	36"	1"	7/8"	1/2"-6
7507	38"	1"	1"	1/2"-6
7508	40"	1"	1"	1/2"-6
7509	42"	1"	1"	1/2"-6

Steering Wheel Cap

- PVC Plastic
- Teak Wood



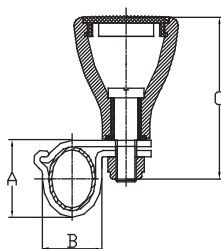
PART NO.	DESCRIPTION
7406-PC	PVC Spring Cap
7406-SPC	PVC Spring Cap w/ SS Cover
7406-SPE	Teak Cover Cap

Wheel Control Knob

- 316 Stainless Steel Cast
- Nylon Cap



PART NO.	A	B	C
7300SCK	15/16"	3/4"	2-1/2"

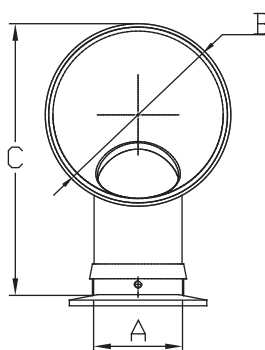


Round Cowl Vent



- 304 Stainless Steel Stamped

PART NO.	A	B	C	COLOR
1350SK-W	3"	6-1/4"	9-3/8"	White
1350SK-R	3"	6-1/4"	9-3/8"	Red
1360SK-W	4"	8-1/2"	11-1/2"	White
1360SK-R	4"	8-1/2"	11-1/2"	Red

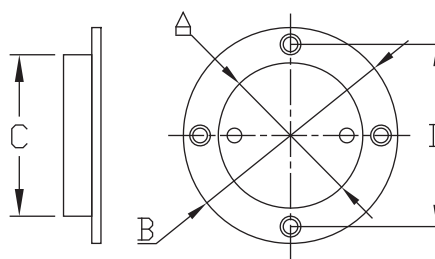


Standard Deck Plate



- 316 Stainless Steel Cast

PART NO.	A	B	C	D
6361S	3"	4-5/8"	3-5/16"	3-7/8"
6362S	4"	5-1/2"	4-3/8"	4-13/16"

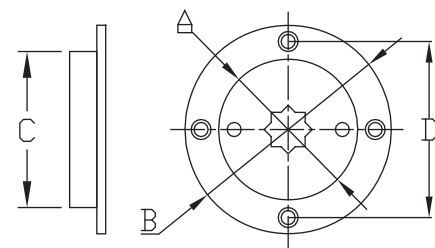


Deck Plate with Star Pattern



- 316 Stainless Steel Cast

PART NO.	A	B	C	D
6361SD	3"	4-5/8"	3-5/16"	3-7/8"
6362SD	4"	6"	4-3/8"	5-1/4"

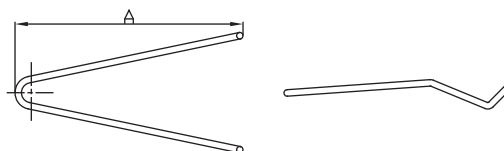


Wire Key



- 304 Stainless Steel Rod
- Wire Key for 3" and 4" Deck Plates

PART NO.	A
1350KY	7"

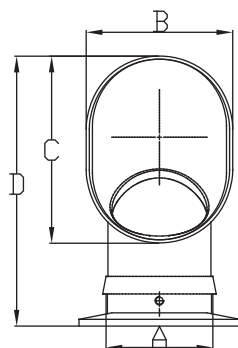


Oval Cowl Vent



- Bronze Cast
- Red Powder Coat Interior

PART NO.	A	B	C	D
1303B	3"	4-1/2"	6-1/2"	9"
1300B	4"	3-3/4"	5-3/4"	9-3/4"

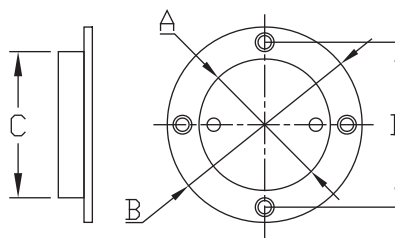


Deck Plate



- Bronze Cast

PART NO.	A	B	C	D
1380B	3"	4-5/8"	3-5/16"	3-7/8"
1382B	4"	6"	4-3/8"	5-1/4"

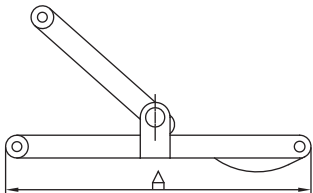


Bronze Cast Deck Plate Key



- Bronze Cast
- Key for 3" and 4" Deck Plates

PART NO.	A
1393B	6"

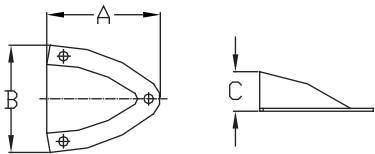


Midget Vent



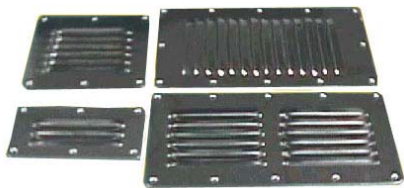
- 304 Stainless Steel Stamped

PART NO.	A	B	C
6564S	1-5/8"	1-3/4"	1/2"
6566S	2-1/4"	2-1/8"	5/8"

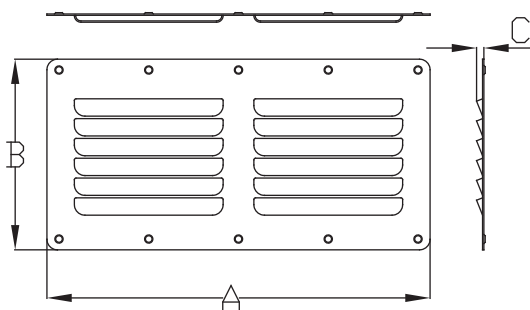


SS 304 Stamped Louvered Vent

- 304 Stainless Steel Stamped



PART NO.	A	B	C
7721S	5"	2-1/2"	3/16"
7722S	5"	4-1/2"	3/16"
7723S	9"	4-1/2"	3/16"
7723SV	9"	5"	3/16"

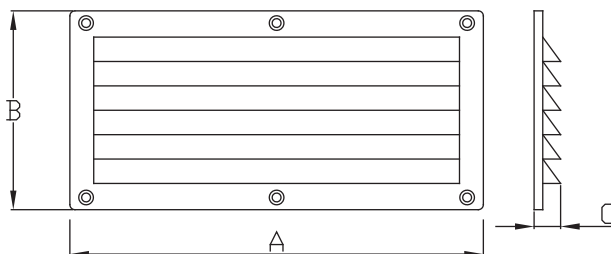


Louvered Vent

- ABS Plastic



PART NO.	A	B	C
58824B	5-1/2"	4-7/8"	5/8"
58825B	10-1/4"	4-7/8"	5/8"

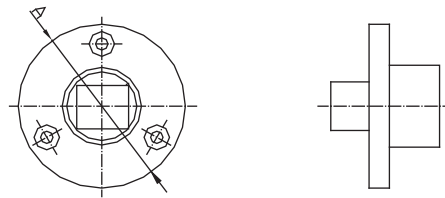


Garboard Plug



- Brass Cast
- 316 Stainless Steel Cast
- 1/2" NPT Tapered

PART NO.	MATERIAL	A
8074B	Brass	2"
8074BP	Replacement plug	
8074S	316 SS	2"
8074SP	Replacement plug	

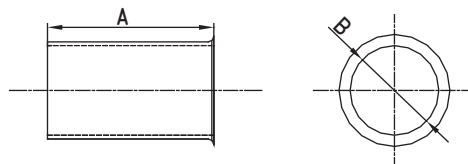


Garboard Plug



- Brass Cast

PART NO.	A	B
54183	1-7/8"	1"
54184	3"	1"
54182	3"	1-1/4"

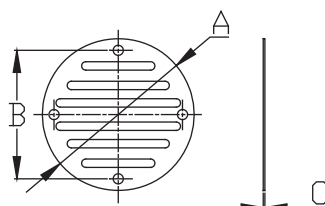


Drain Cover



- 304 Stainless Steel Stamped

PART NO.	A	B	C
7728S	3-1/4"	2-3/4"	1/32"

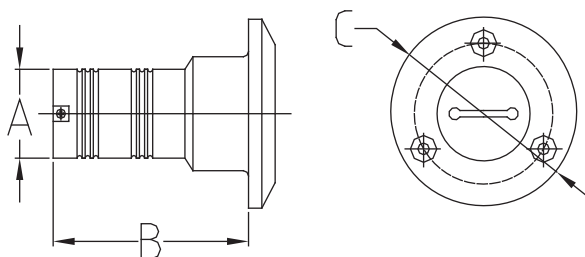


Deck Fill



- 316 Stainless Steel Cast
- Includes Key

PART NO.	A	B	C	MARKING
6002S	1-1/2" Hose	3"	3"	WASTE
6004S	1-1/2" Hose	3"	3"	DIESEL
6005S	1-1/2" Hose	3"	3"	GAS
6006S	1-1/2" Hose	3"	3"	WATER
6007S	2" Hose	3-3/16"	3-1/2"	GAS
6008S	2" Hose	3-3/16"	3-1/2"	DIESEL

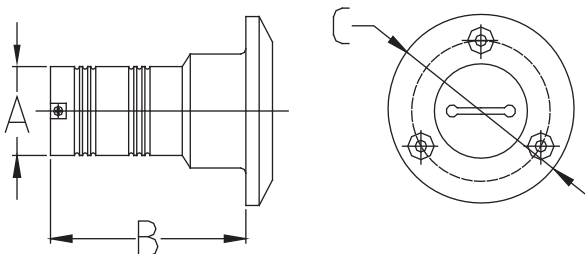


Deck Fill with Colored Text



- 316 Stainless Steel Cast
- Includes Key
- Colored Text with Internationally Recognized Symbols

PART NO.	A	B	C	MARKING
6002SEU	1-1/2" Hose	3"	3"	WASTE, with black symbol
6004SEU	1-1/2" Hose	3"	3"	DIESEL, with green symbol
6005SEU	1-1/2" Hose	3"	3"	GAS, with red symbol
6006SEU	1-1/2" Hose	3"	3"	WATER, with blue symbol
6007SEU	2" Hose	3-3/16"	3-1/2"	GAS, with red symbol
6008SEU	2" Hose	3-3/16"	3-1/2"	DIESEL, with green symbol

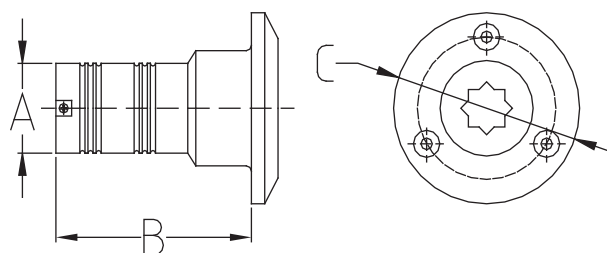


Deck Fill for Sailboats



- 316 Stainless Steel Cast
- Includes Key
- Caps Fit a Sailboat Winch Handle

PART NO.	A	B	C	MARKING
6002SAIL	1-1/2" Hose	3"	3"	WASTE
6004SAIL	1-1/2" Hose	3"	3"	DIESEL
6006SAIL	1-1/2" Hose	3"	3"	WATER
6009SAIL	Replacement cap for sail boat deck fill			
—Cap thread: 1-1/4" 12 NPS				



Replacement Parts

- 316 Stainless Steel Cast



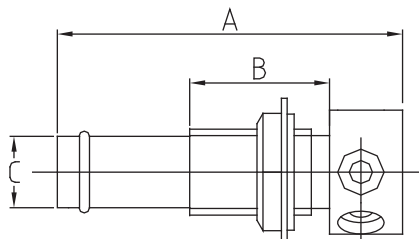
PART NO.	DESCRIPTION	DECK FILL CAP SIZE	THREAD
6009SAIL	Winch Cap	1-1/2" 1-1/4"	11-1/2 NPS
6009S	Slot Cap	1-1/2" 1-1/4"	11-1/2 NPS
6009SPE	Slot Cap	2" 1-1/2"	11-1/2 NPS
6009SK	Standard Slot Key		

Straight Fuel Vent



- 316 Stainless Steel Cast

PART NO.	A	B	C
6600S	2-7/8"	1"	5/8" Hose

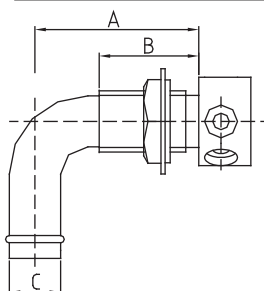


90° Fuel Vent



- 316 Stainless Steel Cast

PART NO.	A	B	C	VENT DIREC.
6601S	2-1/2"	1-1/8"	5/8" Hose	Up
6602S	2-1/2"	1-1/8"	5/8" Hose	Down
6603S	3-3/4"	3"	1" Hose	Down

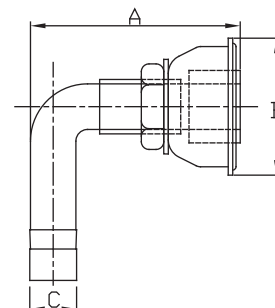


Flush Mount 90° Fuel Vent



- 316 Stainless Steel Cast

PART NO.	A	B	C	VENT DIREC.
6601SCAP	2-1/2"	1-1/8"	5/8" Hose	Up
6602SCAP	2-1/2"	1-1/8"	5/8" Hose	Down
6603SCAP	3-3/4"	3"	1" Hose	Down

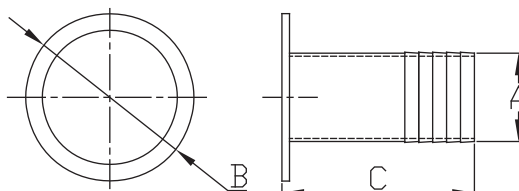


Exhaust with Cover



- 316L Stainless Steel Cast
- Silicone Cover

PART NO.	A	B	C
7580CSE	3-1/2"	5-7/16"	3-7/8"
7581CSE	5"	7-3/4"	5-11/16"

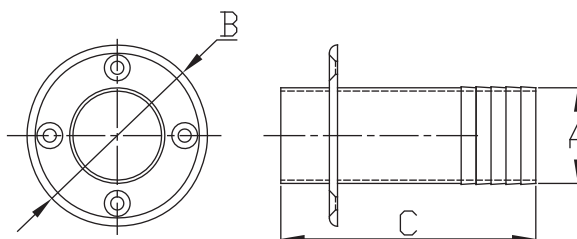


Transom Exhaust Pipe



- 304 Stainless Steel Stamped

PART NO.	A	B	C
7570S	1-1/2"	3-1/4"	4-9/16"
7571S-TWC	1-7/8"	3-5/8"	5-9/16"
7573S-TWC	2-1/2"	4-1/8"	5-9/16"
7574S	3"	4-3/4"	4-15/16"

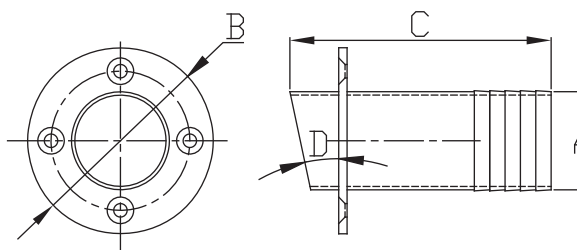


Angled Exhaust Pipe



- 316 Stainless Steel Cast

PART NO.	A	B	C	D
7575S-A12	3-1/2"	6-1/2"	6-1/4"	12°
7576S-A16	4"	7-7/16"	7"	16°

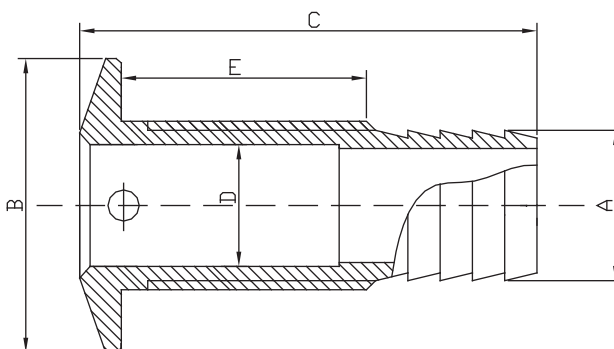


Thru-Hull

- 316 Stainless Steel Cast



PART NO.	A	B	C	D	E	THREAD
6650S-L	5/8"	1-1/4"	3"	3/4"	1-5/8"	1/2-14NPS
6651S-L	3/4"	1-3/4"	3-3/4"	1"	2-1/8"	3/4-14NPS
6652S-L	1"	1-3/4"	4"	1-1/8"	2-1/4"	1-11.5NPS
6653S-L	1-1/8"	1-7/8"	4"	1-3/16"	2-3/8"	1-11.5NPS
6654S-L	1-1/4"	1-7/8"	4-1/8"	1-1/2"	2-7/16"	1.25-11.5NPS
6655S-L	1-1/2"	1-1/8"	4-1/4"	1-3/4"	1-3/4"	1.5-11.5NPS

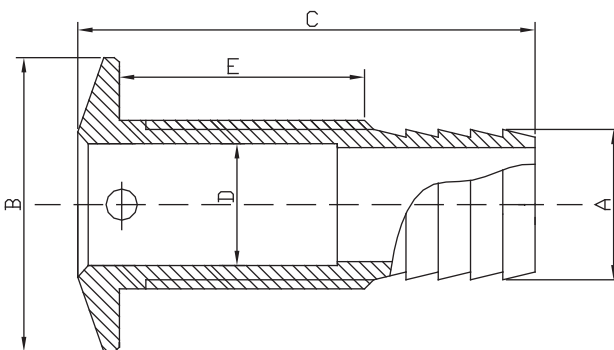


Short Thread Thru-Hull

- 316 Stainless Steel Cast



PART NO.	A	B	C	D	E	THREAD
6650S	5/8"	1-1/2"	2-1/4"	13/16"	1"	1/2-14NPS
6651S	3/4"	1-7/8"	2-1/2"	1"	1"	3/4-14NPS
6652S	1"	2-1/4"	2-1/2"	1-3/16"	1-1/16"	1-11.5NPS
6653S	1-1/8"	2-1/4"	2-1/2"	1-3/16"	1-1/8"	1-11.5NPS
6654S	1-1/4"	2-3/4"	3"	1-1/2"	1-1/4"	1.25-11.5NPS
6655S	1-1/2"	3"	3-1/8"	1-3/4"	1-3/16"	1.5-11.5NPS

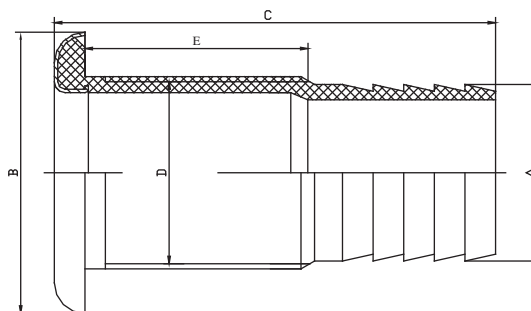


Thru-Hull



- 316 Stainless Steel Stamped Trim
- Nylon Body

PART NO.	A	B	C	D	E
6650N	5/8"	1-7/8"	3-3/16"	1-3/8"	1-1/8"
6651N	3/4"	1-7/8"	3-7/16"	1-3/8"	1-1/8"
6652N	1"	1-7/8"	3-3/8"	1-3/8"	1-1/8"
6653N	1-1/8"	1-7/8"	3-1/16"	1-3/8"	1-1/8"
6654N	1-1/4"	2-3/8"	4-1/16"	1-5/8"	1-1/4"
6655N	1-1/2"	2-3/8"	4-1/16"	1-5/8"	1-1/4"

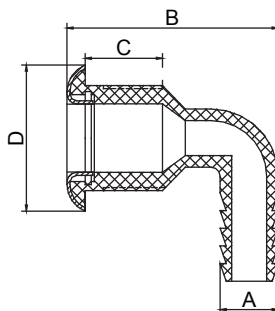


90° Thru-Hull



- 316 Stainless Steel Stamped Trim
- Nylon Body

PART NO.	A	B	C	D
6651N-90	3/4"	2-3/4"	1"	1-7/8"
6653N-90	1-1/8"	4-1/2"	1-5/8"	2-3/8"
6655N-90	1-1/2"	4-7/16"	3"	2-3/8"



Stainless Deck Hatches



- CE Approved
- 316 Stainless Steel Bent Frame
- 316 Stainless Steel Cast Hinges
- Low Profile
- UV Resistant Acrylic
- Optional Standard or Gas Arms



Low Profile

New Feature:

Friction Hinge

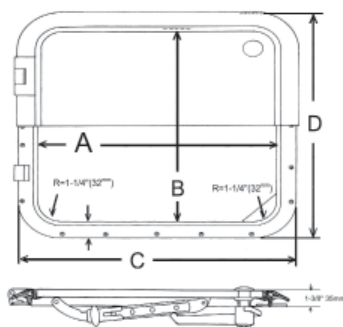
- Patented Design
- Hatch Can Be Held Open at Any Degree
- Elegant and Modern Feel
- No Gas Arms or Support Needed



Inside Opening Deck Hatch



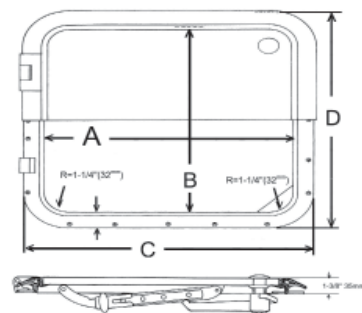
PART NO.	A	B	C	D	ACRYLIC THICKNESS
LDH-08-I	8-1/8"	13-3/4"	10-5/8"	16-1/4"	1/2"
LDH-10-I	10"	10"	12-1/2"	12-1/2"	1/2"
LDH-20-I	12-1/2"	17-1/2"	15"	20"	1/2"
LDH-30-I	14-1/2"	19-1/2"	17"	22"	1/2"
LDH-40-I	16-1/2"	16-1/2"	19"	19"	1/2"
LDH-50-I	19-1/2"	19-1/2"	22"	22"	1/2"
LDH-60-I	24"	24"	26-1/2"	26-1/2"	1/2"
LDH-70-I	31"	31"	33-1/2"	33-1/2"	1/2"



In/Outside Opening Deck Hatch



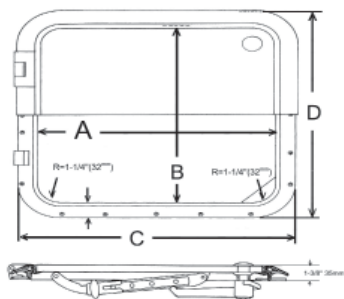
PART NO.	A	B	C	D	ACRYLIC THICKNESS
LDH-30-O	14-1/2"	19-1/2"	17"	22"	1/2"
LDH-40-O	16-1/2"	16-1/2"	19"	19"	1/2"
LDH-50-O	19-1/2"	19-1/2"	22"	22"	1/2"
LDH-60-O	24"	24"	26-1/2"	26-1/2"	1/2"
LDH-70-O	31"	31"	33-1/2"	33-1/2"	1/2"



Double Opening Deck Hatch



PART NO.	A	B	C	D	ACRYLIC THICKNESS
LDH-50-D	19-1/2"	9-1/2"	22"	22"	1/2"
LDH-60-D	24"	24"	26-1/2"	26-1/2"	1/2"
LDH-70-D	31"	31"	33-1/2"	33-1/2"	1/2"



www.whitewatermh.com



Please visit our website for more details and custom information.

Stainless Deck Hatches



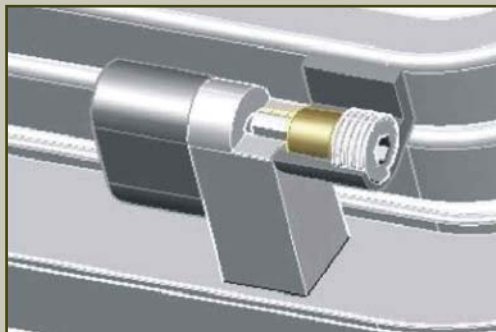
- CE Approved
- 316 Stainless Steel Bent Frame
- 316 Stainless Steel Cast Hinges
- Thermoplastic Neoprene Gasket
- Tempered Glass
- Straight or Angled Spigot



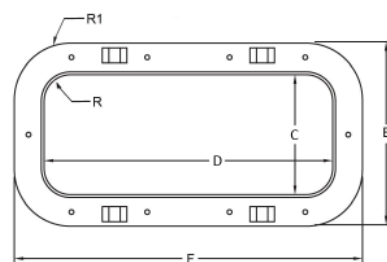
New Feature:

Friction Hinge

- Patented Design
- Portlight Can Be Opened at Any Degree
- Elegant and Modern Feel
- No Gas Arms, Chains, or Support Needed



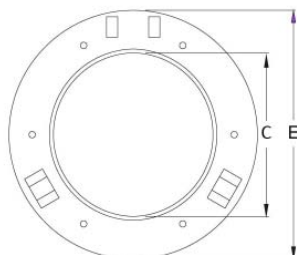
Rectangular Portlight



- Straight or Angled Spigot
- Spigot Sizes 1-1/4", 1-1/2", 2", 2-1/2", 3", 3-1/2"
- Optional Storm Cover
- Optional Stay Arms
- Fixed Versions Available

PART NO.	C	D	E	F	R	R1	GLASS THICKNESS
LS-0512	5-1/4"	12-1/8"	7-5/8"	14-1/2"	1-1/4"	2-3/8"	1/4"
LS-0714	7-1/4"	14-1/4"	9-5/8"	16-5/8"	1-1/4"	2-3/8"	1/4"
LS-0716	7-1/4"	16-1/4"	9-5/8"	18-5/8"	1-1/4"	2-3/8"	1/4"
LS-0718	7-1/4"	18-1/4"	9-5/8"	20-5/8"	1-1/4"	2-3/8"	1/4"
LS-0816	8-1/4"	16-1/4"	10-5/8"	18-5/8"	1-1/4"	2-3/8"	1/4"
LS-0818	8-1/4"	18-1/4"	10-5/8"	20-5/8"	1-1/4"	2-3/8"	1/4"
LS-1020	10-3/8"	20-3/8"	12-7/8"	22-7/8"	1-1/4"	2-3/8"	3/8"
LS-1024	10-3/8"	24-3/8"	12-7/8"	26-7/8"	1-1/4"	2-3/8"	3/8"
LS-1224	12-3/8"	24-3/8"	14-7/8"	26-7/8"	1-1/4"	2-3/8"	3/8"
LS-1228	12-3/8"	28-3/8"	14-7/8"	30-7/8"	1-1/4"	2-3/8"	3/8"

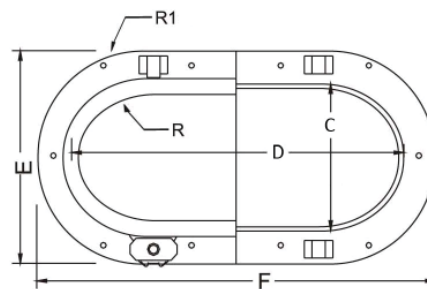
Round Portlight



- Straight Spigot Only
- Spigot Sizes 1-1/4", 1-1/2", 2", 2-1/2", 3", 3-1/2"
- Optional Storm Cover
- Optional Stay Arms
- Fixed Versions Available

PART NO.	C	E	GLASS THICKNESS
LS-0700	7-1/4"	9-5/8"	5/16"
LS-0800	8-1/4"	10-5/8"	5/16"
LS-1000	10-3/8"	12-7/8"	3/8"
LS-1200	12-3/8"	14-7/8"	3/8"
LS-1400	14-3/8"	16-7/8"	3/8"

Oval Portlight



- Straight or Angled Spigot
- Spigot Sizes 1-1/4", 1-1/2", 2", 2-1/2", 3", 3-1/2"
- Optional Storm Cover
- Optional Stay Arms
- Fixed Versions Available

PART NO.	C	D	E	F	R	R1	GLASS THICKNESS
LS-0512	5-1/4"	12-1/8"	7-5/8"	14-1/2"	1-1/4"	2-3/8"	5/16"
LS-0714	7-1/4"	14-1/4"	9-5/8"	16-5/8"	1-1/4"	2-3/8"	5/16"
LS-0716	7-1/4"	16-1/4"	9-5/8"	18-5/8"	1-1/4"	2-3/8"	5/16"
LS-0718	7-1/4"	18-1/4"	9-5/8"	20-5/8"	1-1/4"	2-3/8"	5/16"
LS-0816	8-1/4"	16-1/4"	10-5/8"	18-5/8"	1-1/4"	2-3/8"	5/16"
LS-0818	8-1/4"	18-1/4"	10-5/8"	20-5/8"	1-1/4"	2-3/8"	5/16"
LS-1020	10-3/8"	20-3/8"	12-7/8"	22-7/8"	1-1/4"	2-3/8"	3/8"
LS-1024	10-3/8"	24-3/8"	12-7/8"	26-7/8"	1-1/4"	2-3/8"	3/8"
LS-1224	12-3/8"	24-3/8"	14-7/8"	26-7/8"	1-1/4"	2-3/8"	3/8"
LS-1228	12-3/8"	28-3/8"	14-7/8"	30-7/8"	1-1/4"	2-3/8"	3/8"

H-Trim Ring

- Alternative H-Trim Ring Available



www.whitewatermh.com



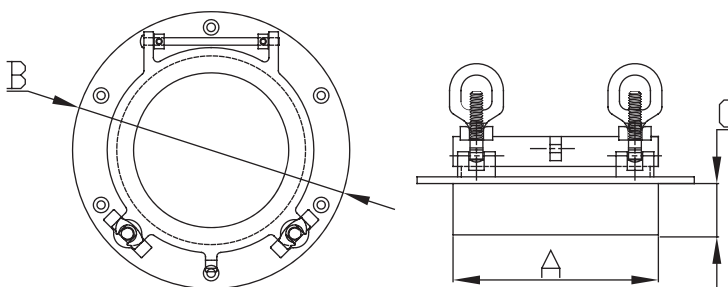
Please visit our website for more details and custom information.

Bronze Round Opening Ports



- Bronze Cast
- Includes Trim Ring
- Screen Ordered Separately

PART NO.	A	B	C	GLASS THICKNESS
1180B	4-5/16"	7"	1-1/2"	1/4"
1182B	6-3/8"	9"	1-1/2"	1/4"
1184B	8-3/8"	11-1/4"	1-1/2"	1/4"
1190B	10-1/2"	13-3/4"	1-7/8"	1/4"
1186B	12-1/2"	15-1/4"	2-3/8"	1/4"

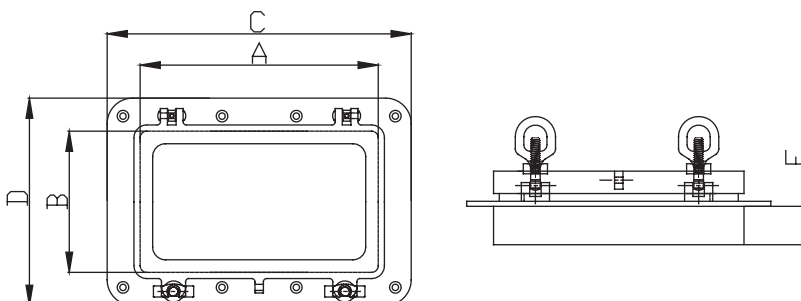


Rectangular Opening Ports



- Bronze Cast
- Includes Trim Ring
- Screen Ordered Separately

PART NO.	A	B	C	D	E	GLASS THICKNESS
1140B	12-7/16"	5-1/2"	14-1/2"	7-1/2"	1-1/2", 15° Slope	1/4"
1148B	14-5/8"	7-1/2"	17"	10"	1-1/2", 15° Slope	1/4"

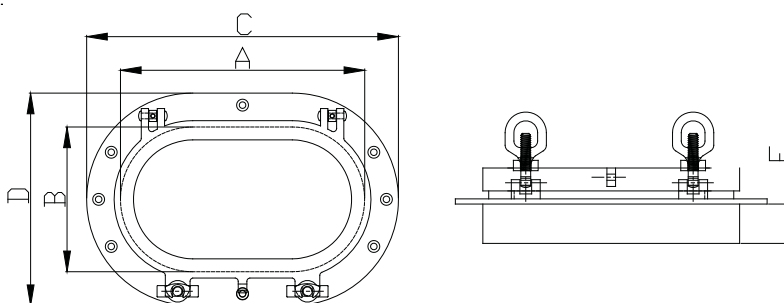


Oval Opening Ports



- Bronze Cast
- Includes Trim Ring
- Screen Ordered Separately

PART NO.	A	B	C	D	E	GLASS THICKNESS
1120B	8-1/4"	5-5/16"	10-1/4"	7-3/8"	1-1/2"	1/4"
1124B	10-5/16"	6-3/8"	12-1/2"	8-1/2"	1-1/2"	1/4"
1128B	13-3/8"	8-9/16"	16-1/2"	10-3/4"	1-1/2"	1/4"

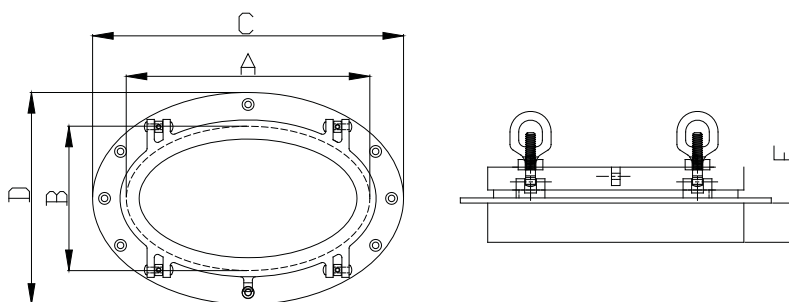


Bronze Elliptical Opening Ports



- Bronze Cast
- Includes Trim Ring
- Screen Ordered Separately

PART NO.	A	B	C	D	E	GLASS THICKNESS
1110B	12-1/2"	4-7/8"	16-3/4"	7-7/8"	1-1/2", 10° Slope	1/4"
1114B	14-5/8"	5-1/2"	14-1/2"	7"	1-1/2", 10° Slope	1/4"

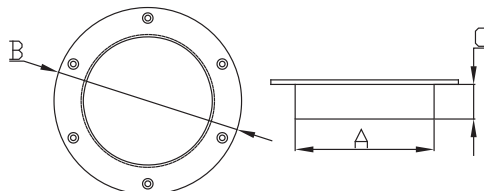


Bronze Round Fixed Ports



- Bronze Cast

PART NO.	PORTLIGHT SIZE	CUT-OUT SIZE	OVERALL DIA.	SPIGOT LENGTH	GLASS THICKNESS
1192B	4"	4-1/2"	5-1/2"	1/2"	1/4"
1194B	5"	5-5/8"	6-3/8"	3/4"	1/4"
1196B	6"	6-7/8"	8-1/8"	3/4"	1/4"
1198B	8"	9"	11"	1-1/16"	1/4"
1178B	10"	11-1/8"	13-3/4"	1-1/2"	1/4"

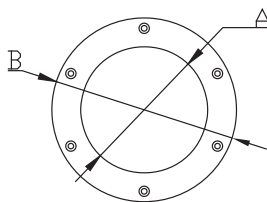


Bronze Round Trim Ring



- Bronze Cast

PART NO.	A	B	SCREW SIZE
1193B	4-1/2"	5-1/2"	1/4"
1195B	5-5/8"	6-3/8"	1/4"
1197B	6-7/8"	8-1/8"	1/4"
1199B	9"	11"	1/4"
1179B	11-1/8"	13-3/4"	5/8"

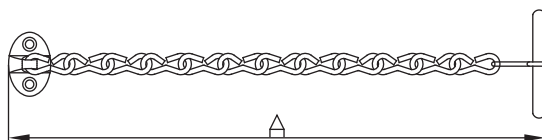


Bronze Round Fixed Ports



- Bronze Cast

PART NO.	A	DESCRIPTION
8131B	12-1/2"	Brass Anchor Portlight Chain
8130B	8-1/2"	Brass T-Bar Portlight Chain
8130BC	8"	Chrome-Plated Brass T-Bar Portlight Chain

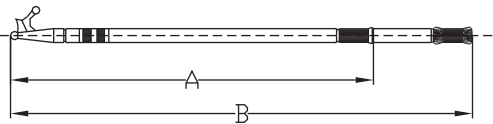


Deluxe Boat Hook



- Aluminum Extrusion
- 2 Sections
- Tube Diameter: 1", 1-1/8"

PART NO.	A	B
56304	49"	76"

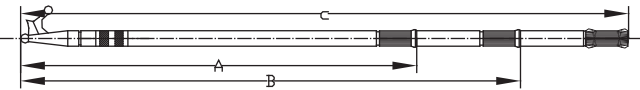


Deluxe Boat Hook



- Aluminum Extrusion
- 3 Sections
- Tube Diameter: 1", 1-1/8", 1-1/4"

PART NO.	A	B	C
56305	42"	72-1/2"	92"

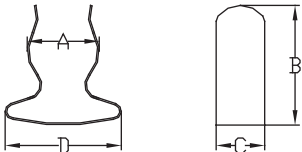


Boat Hook Clip



- 304 Stainless Steel Stamped

PART NO.	A	B	C	D	FASTENER
2938SS	3/4" to 1"	1-11/16"	7/16"	1-3/8"	#7 PH
2939SS	1" to 1-1/4"	2-3/8"	3/4"	1-13/16"	#7 PH

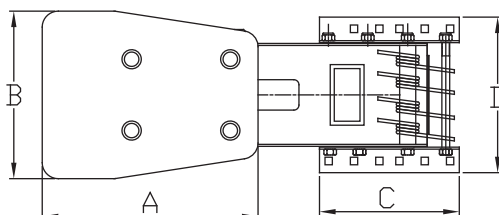


Outboard Motor Bracket



- 316 Stainless Steel Cast

PART NO.	A	B	C	D	HP RATING	WEIGHT LIMIT
5100	10-3/8"	8-1/4"	8"	8-5/8"	To 20 HP	90 lbs.

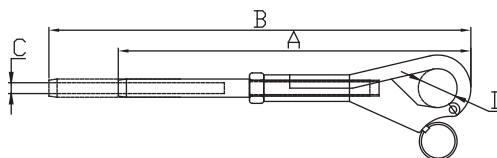


Lifeline Pelican Hook



- 316 Stainless Steel Cast

PART NO.	A	B	C	D
6420S	4-1/2"	4-27/32"	1/8" Wire	1/2"
6422S	5-7/8"	5-27/32"	3/16" Wire	9/16"

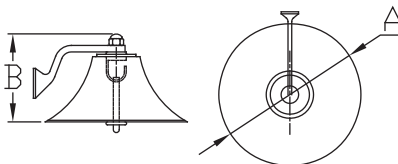


Brass Cast Bell



- Brass Cast
- Chrome-Plated Brass Cast

PART NO.	MATERIAL	A	B
1792B	Brass	6"	3-7/8"
1792BC	Chrome-Plated Brass	6"	3-7/8"
1793B	Brass	8"	4-5/8"
1793BC	Chrome-Plated Brass	8"	4-5/8"





Stainless Steel Deck & Fishing Folding Chair

The Amar stainless steel folding deck chair is constructed using marine grade stainless steel 304 tubing and cushioned with high density foam cushions wrapped in white marine grade vinyl. Seat, back, and arm cushions contain long-lasting plastic panels that are designed to withstand the rigors of the marine environment. Unlike the standard plywood panels used in many of our competitors' cushions, our panels will not rot or warp--ensuring years of boating enjoyment.

- Upgrade to a stainless steel deck chair from aluminum
- High quality at an affordable price

CHAIR SPECIFICATIONS

Overall Height	32"
Overall Width	25-1/2"
Seat Cushion Width	19-1/2"
Seat Cushion Length	14"

FOLDED SPECIFICATIONS

Folded Height	14-1/2"
Folded Width	25-1/2"
Folded Length	31"

PACKAGE SPECIFICATIONS

Dimension	26" x 15" x 31-1/2"
Weight	26 lbs.



50001CSW

Drink Holder

- 316 Stainless Steel Cast
- Bottom Mounted



56220S

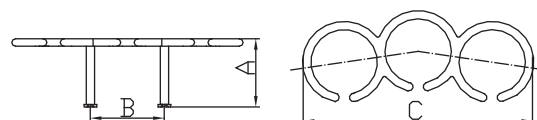
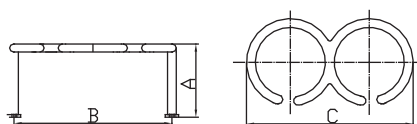
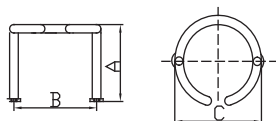


56222S



56224S

PART NO.	HOLDS	A	B	C
56220S	1 Cup	2-25/32"	3-27/32"	4-5/32"
56222S	2 Cups	2-25/32"	8"	8-1/8"
56224S	3 Cups	2-25/32"	4-1/4"	12-1/2"

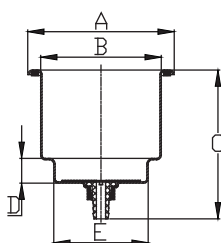


Recessed Drink Holder

- 304 Stainless Steel Drawn
- Flush Mounted
- Nylon Hose Barb for 3/8" Hose
- Self-Adhesive Gasket Under Rim



PART NO.	A	B	C	D	E
56228S	4-1/4"	3-1/2"	4-3/8"	5/8"	2-11/16"

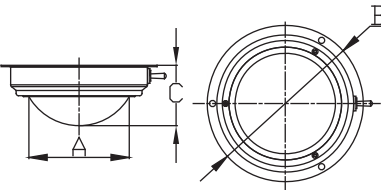


Dome Light



- 304 Stainless Steel Stamped Frame
- 12V 15W

PART NO.	A	B	C
2124S	4-5/8"	6-7/8"	2-5/16"

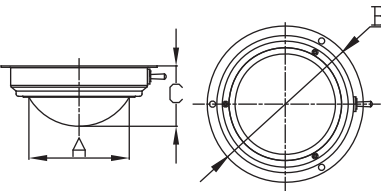


Day/Night Dome Light



- 304 Stainless Steel Stamped Frame
- 12V 15W
- Clear and Red Bulb

PART NO.	A	B	C
2124SD	4-5/8"	6-7/8"	2-5/16"

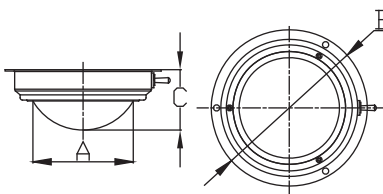


Small Dome Light



- 304 Stainless Steel Stamped Frame

PART NO.	A	B	C
2126S	3-7/8"	5-1/2"	2"

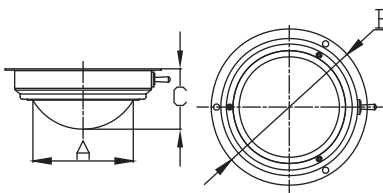


Small Dome Light with Halogen Bulb



- 304 Stainless Steel Stamped Frame

PART NO.	A	B	C
2126SH	3-7/8"	5-1/2"	2"

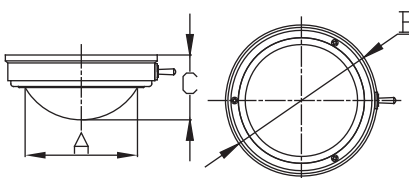


Small Dome Light with Halogen Bulb



- 304 Stainless Steel Stamped Frame

PART NO.	A	B	C
2120BT	5"	6-1/8"	2-1/8"

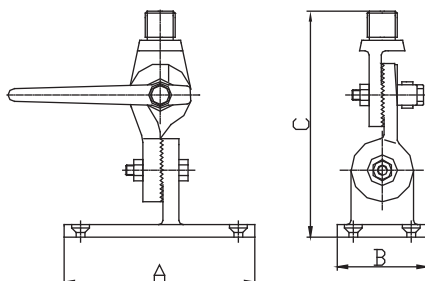


Heavy Duty 4-way Ratchet Mount



- 316 Stainless Steel Cast
- Standard 1"-14 Male Thread
- Through-Hole for VHF or GPS Cable

PART NO.	A	B	C
6520S	3-3/4"	2-1/4"	6"

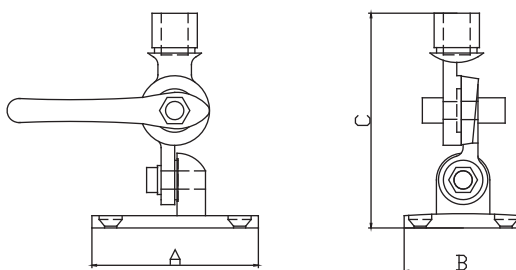


Economic 4-way Ratchet Mount



- 316 Stainless Steel Cast

PART NO.	A	B	C
6508S	3-5/8"	2-9/16"	4-1/2"



Part No. Page No.

01232SPE	55
02321S	26
02322S	26
02323S	26
02341S	27
02342S	27
02343S	27
02926S	27
02927S	27
07435ES	50
1110B	83
1114B	83
1120B	83
1124B	83
1128B	83
1140B	82
1148B	82
1178B	84
1179B	84
1180B	82
1182B	82
1184B	82
1186B	82
1190B	82
1192B	84
1193B	84
1194B	84
1195B	84
1196B	84
1197B	84
1198B	84
1199B	84
1210U	10
1300B	66
1303B	66
1350KY	66
1350SK-R	65
1350SK-W	65
1360SK-R	65
1360SK-W	65
1380B	66
1382B	66
1393B	67
1792B	86
1792BC	86
1793B	86
1793BC	86
2030HS-L	50
2030HS-R	50
2034HS-L	50
2034HS-R	50
2051S	56
2058B	60
2060B	60
2062B	55

Part No. Page No.

2064B	55
2066SS	56
2072B	53
2088B	51
2100B	52
2120BT	90
2124S	89
2124SD	89
2126S	90
2126SH	90
2400SS	51
2600S	52
2938SS	85
2939SS	85
4022B	53
50001CSW	87
5100	86
53300SL	6
53301SS	7
53305S	7
53305SB	7
53305SH	7
53315S	5
53316S	5
53317S	5
53320S	4
53320SC	4
53321S	4
53321SC	4
53322S	4
53322SC	4
54182	69
54183	69
54184	69
56090T	33
56090T-LE	33
56090T-LT	33
56093P	33
56094P	33
56095P	33
56097E	34
56097T	34
56098R	34
56098W	34
56105S	34
56105SPE	34
56110AP	36
56111AP	36
56135SP	5
56136SP	5
56136SPC	5
56220S	88
56222S	88
56224S	88
56228S	88

Part No. Page No.

56304	85
56305	85
57738S	6
57738SR	6
57739S	6
57739SR	6
58700B	30
58701B	30
58703B	30
58704B	30
58706B	30
58707B	30
58824B	68
58825B	68
6002S	70
6002SAIL	71
6002SEU	70
6004S	70
6004SAIL	71
6004SEU	70
6005S	70
6005SEU	70
6006S	70
6006SAIL	71
6006SEU	70
6007S	70
6007SEU	70
6008S	70
6008SEU	70
6009S	70
6009SAIL	74
6009SK	70
6009SPE	70
6015S	40
6016S	40
6017SL	40
6017SR	40
6018S	41
6020S	41
6028S	19
6030S	19
6032S	19
6034S	19
6036S	19
6037S	19
6038S	19
6039S	19
6040S	19
6044S	19
6046S	19
6048S	19
6050S	20
6052SH	20
6054S	20
6060S	20

Part No.	Page No.
6062S	20
6064S	20
6070S	20
6072SP	20
6074S	20
6080S	43
6082S	43
6084S	43
6084SPE	43
6086S	44
6090S	60
6090S-N	60
6092S	60
6094S	61
6100S	45
6104S	44
6106S	44
6108S	45
6110S	45
6112SL	49
6112SR	49
6114S	47
6116S	47
6117S	47
6117SR	47
6118S	47
6118SR	47
6120S	48
6121S	48
6122S	48
6126S	46
6231S	21
6231S-L	21
6322S	21
6324S	21
6325S	22
6325S-C	22
6325S-R	22
6330S	26
6332S	26
6334S	26
6340S	27
6342S	27
6344S	27
6361S	65
6361S	65
6361SD	65
6362S	65
6362S	65
6362SD	65
6420S	86
6422S	86
6500S	54
6508S	91
6520S	91

Part No.	Page No.
6539S	61
6564S	67
6566S	67
6599S	52
6600S	72
6602S	72
6602SCAP	72
6603SCAP	72
6650N	75
6650S	74
6650S-L	74
6651N	75
6651N-90	75
6651S	74
6651S-L	74
6652N	75
6652S	74
6652S-L	74
6653N	75
6653N-90	75
6653S	74
6653S-L	74
6654N	75
6654S	74
6654S-L	74
6655N	75
6655N-90	75
6655S	74
6655S-L	74
6800S	28
6802S	28
6802SH	28
6804SH	28
6810S	28
6810SEU	28
6811S	28
6811SEU	28
6813SEU	29
6815S	29
6815SEU	29
6816S	29
6816SEU	29
6817SEU	29
6820S	30
6821S	30
6822S	30
6825S	31
6828S	31
6830S	31
6830S-PIN	31
6832S	32
6834S	32
6839S	32
6840S	36
6841S	36

Part No.	Page No.
6842S	36
6843S	36
6845S	36
6846S	36
6847S	36
6848S	36
6850S	36
6851S	36
6852S	36
6853S	36
6855S	36
6856S	36
6857S	36
6858S	36
6859S	36
6860S	39
6860S-P	39
6860S-S	39
6861S	39
6861S-P	39
6861S-S	39
6862S	39
6865S	39
6866S	39
6867S	39
6870S	37
6871S	37
6872S	37
6873S	37
6876S	37
6877S	37
6878S	38
6879S	38
6895S	38
6896S	38
6897S	41
7100-01-DK	53
7100-07	57
7100-08	57
7100G	57
7100S	57
7112S	57
7113SLK	57
7118S	57
7119SLK	57
7300SCK	64
7302PCA	63
7302PCA10	63
7303PCA	63
7308	62
7308PCA	63
7319SRK	62
7320SRK	62
7327NT	62
7328NT	62

Part No. Page No.

7329NT	62
7400PC	62
7401PC	62
7402BFC	63
7402PC	62
7402PC10	62
7403BFC	63
7403PC	62
7405PC	62
7406-PC	64
7406SPE	64
7408BFC	63
7500	64
7501	64
7502	64
7503	64
7504	64
7505	64
7506	64
7507	64
7508	64
7509	64
7549	64
7550U	10
7551U-A	10
7551U-B	10
7558U	10
7560U	10
7564U	10
7565S	13
7566S	13
7570S	73
7571S-TWC	73
7573S-TWC	73
7574S	73
7575S-A12	73
7576S-A16	73
7580CSE	73
7581CSE	73
7605	63
7712ES	50
7719ES	45
7721ES	49
7721S	68
7722ES	46
7722S	68
7723ES	68
7723S	68
7723S-V	68
7724ES	46
7725ES	46
7726ES	49
7727ES	48
7728ES	48
7728S	69

Part No. Page No.

7729ES	48
7731ES	46
7731SR	18
7732ES	49
7732S	18
7732SL	18
7732SR	18
7733SL	18
7734SR	18
7736S	18
7736SR	18
7737S	18
7737SPE	18
7740S	61
7742S	61
7743S	61
7750S	54
7751S	54
7767S	25
7767SPE	25
7768S	25
7769S	25
7772S	25
7846S-B	23
7848S-B	23
7848S-D	24
7848S-S	23
7850S-B	23
7850S-S	23
7852S-B	23
7852S-S	23
7854S-B	23
7856S-B	23
7858S-B	23
7859S-BL	24
7861S-S	23
7863S-B	23
7864S-B	23
7864S-S	23
7866S-BL	24
7867S-S	23
7870S	42
7872S	42
7873S	42
7875S	42
7882S	42
7884S	42
7886S	42
7888S	42
7892S	42
7892SPE	42
7895S	42
7895SPE	42
7899S	42
7899SPE	42

Part No. Page No.

7990S	58
7991S	58
7992S	58
7995S	58
7996S	59
8074B	69
8074BP	69
8074S	69
8074SP	69
8088BC	56
8124BC	51
8130B	84
8130BC	84
8131B	84
AM1101S	16
AM1301S	16
AM1303AL	17
AM1303AL-B	17
AM7215SA	16
AR7550S	8
AR7552S	8
AR7557S	8
AR7561S	9
ARSST-01	8
ARSW-02	8
ARSW-03	8
ARSW-04	10
ARSW-05	10
ARSW-06	10
ARWC-01HP	10
ARWU-03	10
ARWU-04	10
AS7502S	11
AS7510S	12
AS7520S	12
AS7530S	11
AS7532S	11
AS7536S	11
B00301R	14
B00301R-5	14
B00301UPM	16
B00301WH	18
B00311R	18
B00311UPM	16
B00330	15
B00330-BKT	15
B00331	15
B00331-BKT	15
B00351R	18
B00351UPM	16
B00351WH	15
B00361	14
B00361-G	14
B00401SLD	17
B00451SLD	17